



# 2011 Ozone Action Day Program

## May 1 – October 31



TRANSPORTATION &  
ENVIRONMENTAL  
RESOURCES

Ozone Exceedance Before Ozone Action Day Season	Max 8-Hr
April 12	<b>81</b>
April 13	<b>76</b>

Ozone Exceedance But No Ozone Action Day	Max 8-Hr
May 6	<b>76</b>
May 13	<b>90</b>
May 26	<b>80</b>
August 30	<b>79</b>
September 20	<b>84</b>

Ozone Action Day	Max 8-Hr
June 2	<b>84</b>
June 5	<b>78</b>
June 6	<b>99</b>
August 25	71
August 26	<b>77</b>
August 27	<b>78</b>
August 28	<b>84</b>
August 29	<b>96</b>
September 9	<b>87</b>
September 10	<b>76</b>
September 11	73
September 12	72
September 16	67
September 24	75



# Beaumont/Port Arthur 2011 8-Hour Ozone Exceedances



#	Ozone Action Day	Ozone Exceedance Day	Monitors and Max 8-Hr Values (ppb)
1	Before Season	April 12 (Tuesday)	Sabine Pass (81), Port Arthur TCEQ (76)
2	Before Season	April 13 (Wednesday)	Sabine Pass (76)
3	No	May 6 (Friday)	Mauriceville (76)
4	No	May 13 (Friday)	Sabine Pass (90)
5	No	May 26 (Thursday)	Sabine Pass (80)
6	Yes	June 2 (Thursday)	Sabine Pass (84), Mauriceville (76)
7	Yes	June 5 (Sunday)	Sabine Pass (78)
8	Yes	June 6 (Monday)	Sabine Pass (99), Port Arthur SETRPC (76)
9	Yes	August 26 (Friday)	Beaumont (77)
10	Yes	August 27 (Saturday)	Sabine Pass (78), West Orange (78), Beaumont (76)
11	Yes	August 28 (Sunday)	Port Arthur TCEQ (84), Airport (82)
12	Yes	August 29 (Monday)	Sabine Pass (96), Port Arthur SETRPC (83), Port Arthur TCEQ (82), Hamshire (81), Airport (76)
13	No	August 30 (Tuesday)	Beaumont (79)
14	Yes	September 9 (Friday)	West Orange (87), Beaumont (84), Mauriceville (80), Hamshire (78)
15	Yes	September 10 (Saturday)	West Orange (76)
16	No	September 20 (Tuesday)	Sabine Pass (84)

# Beaumont/Port Arthur

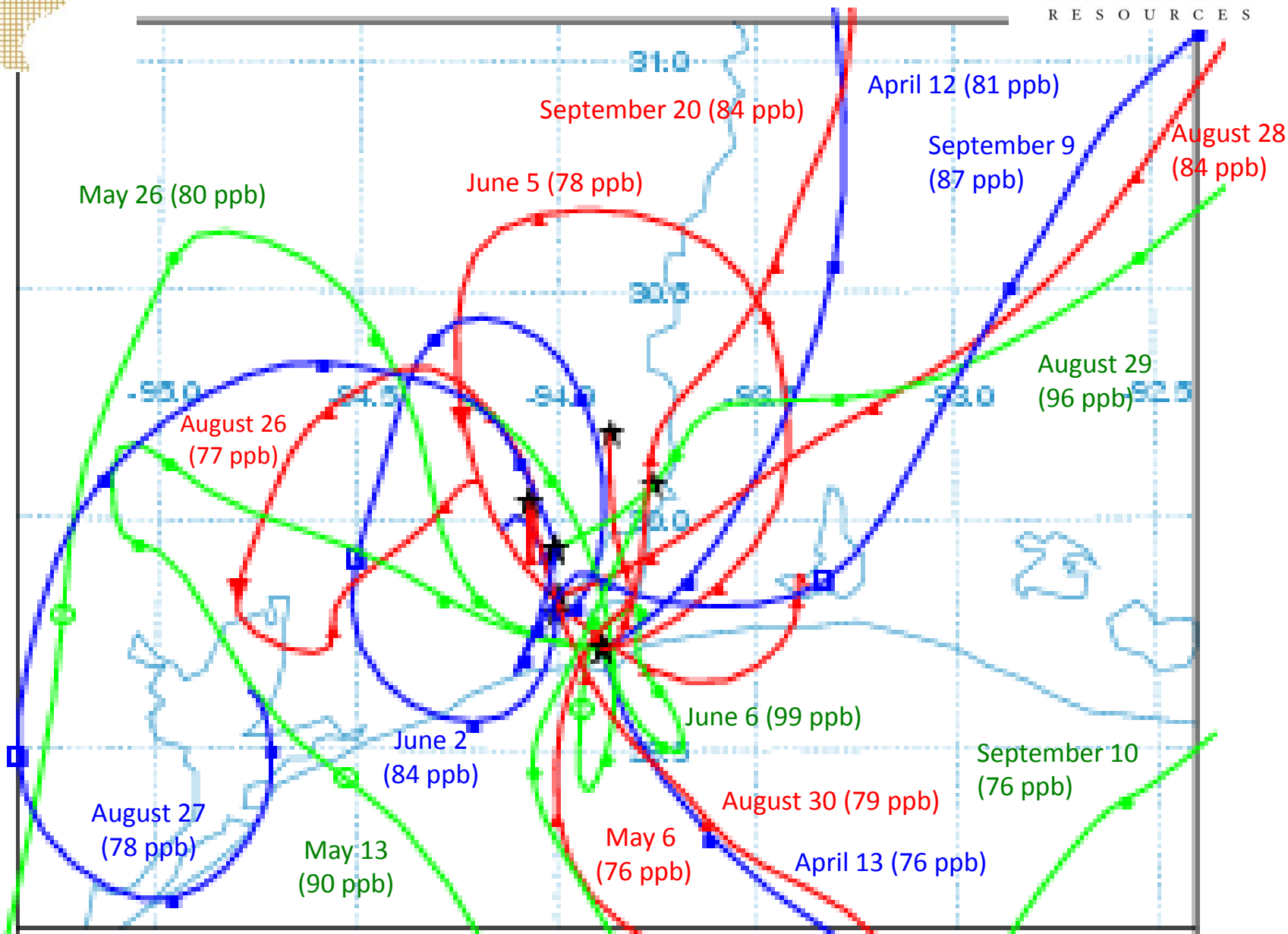
South East Texas  
Regional Planning  
Commission



## 2011 8-Hour Ozone Exceedances

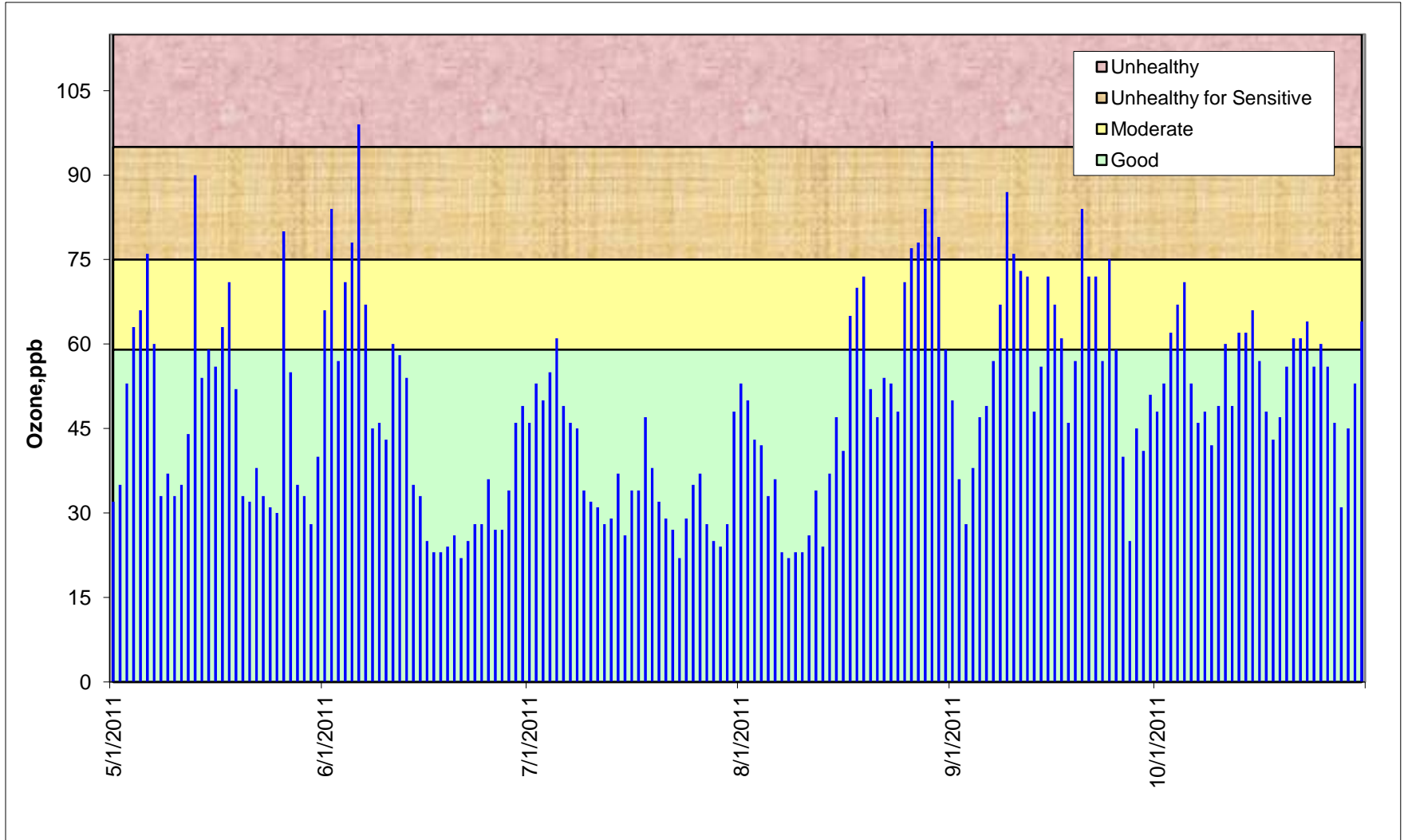


TRANSPORTATION &  
ENVIRONMENTAL  
RESOURCES





# 2011 Daily Maximum 8-Hour Ozone Ozone Action Day Season





# Average 4<sup>th</sup> Highest 8-Hour Ozone Value (ppb) (Attainment when all sites $\leq$ 75 ppb)



TRANSPORTATION &  
ENVIRONMENTAL  
RESOURCES

Monitor	2009 4th High	07-09 <b>Design Value</b>	2010 4th High	08-10 <b>Design Value</b>	2011 4th High	2011 (trigger)	09-11 <b>Design Value</b>
T-Beaumont	71	74	74	72	76	83	73
T-West Orange	73	70	77	71	75	78	75
T-Port Arthur	73	72	80	74	76	75	<b>76</b>
T-Hamshire	70	72	70	70	75	88	71
S-Sabine Pass	73	73	81	74	84	74	<b>79</b>
S-Airport	71	<b>77</b>	71	73	73	86	71
S-Mauriceville	67	70	70	68	72	91	69
S-Port Arthur	69	70	70	68	70	89	69
T-Nederland	69	72	75	70	74	84	72

NAAQS: 75 ppb

As of 12/31/11