

JJOHRTS FY 2025-2028 Transportation Improvement Program

Effective from September 1, 2024 to August 31, 2028

**South East Texas Regional Planning Commission
Metropolitan Planning Organization (SETRPC-MPO)**

*for the Jasper-Jefferson-Orange-Hardin Regional
Transportation Study (JJOHRTS) Area*

30-Day Public Comment Period: April 4, 2024 through May 3, 2024

Adopted by the Transportation Planning Committee on **MONTH DAY, YEAR**

Prepared by WSP

This document was prepared in cooperation with the U.S. Department of Transportation, Federal Highway Administration, Federal Transit Administration, and the Texas Department of Transportation



Table of Contents

Chapter 1:	Planning Process	3
Chapter 2:	Federally Funded Highway Projects	20
Chapter 3:	Grouped Projects.....	37
Chapter 4:	Federally Funded Transit Projects.....	67
Chapter 5:	Financial Summary	76
Chapter 6:	Funding Categories	79
Chapter 7:	Environmental Studies	82
Chapter 8:	Exempt Project Criteria	83
Chapter 9:	Integration of Performance Measures	86
Chapter 10:	Public Involvement Documentation	101
Chapter 11:	Resolution	102
Chapter 12:	MPO Self-Certification	103
Chapter 13:	Revisions	104

Chapter 1: Planning Process

1.0 Introduction

The South East Texas Regional Planning Commission (SETRPC) MPO serves as the Metropolitan Planning Organization (MPO) for southeast Texas, encompassing a three-county area consisting of Jefferson, Orange, and Hardin counties. Jasper County lies just north of this region. Over the past few years, SETRPC MPO has been collaborating with TxDOT's Transportation Planning and Programming Division (TPP) to extend its jurisdiction to incorporate Jasper County. To facilitate this incorporation process, updates have been made to the Jasper-Jefferson-Orange-Hardin Regional Transportation Study (JJOHRTS) 2050 Travel Demand Model. Additionally, the new JJOHRTS MTP-2050 and the JJOHRTS 2025-2028 TIP are also developed to encompass this additional area. Currently, SETRPC MPO is working with TxDOT TPP to address the administrative requirements necessary for the resignation of the SETRPC MPO to include Jasper County (Figure 1).

The SETRPC-MPO provides a decision-making forum for southeast Texas and is responsible for conducting a continuing, comprehensive, and cooperative transportation planning process. The main purpose of the SETRPC-MPO is to develop and maintain all transportation plans for the Jasper-Jefferson-Orange-Hardin Regional Transportation Study (JJOHRTS) area. The SETRPC-MPO's short-range transportation plan is the Transportation Improvement Program (TIP), which presents the various highway and transit projects that are expected to be let for construction or implementation within the four-year time frame covered. All regional transportation projects and programs are required to be identified and prioritized in the TIP in order to be eligible for Federal Highway Administration (FHWA) and Federal Transit Administration (FTA) funds.

1.1 TIP Structure

The JJOHRTS Fiscal Year (FY) 2025-2028 TIP is the short-range implementation portion of the JJOHRTS Metropolitan Transportation Plan (MTP) 2045. Developed through coordinated federal, state, and local efforts, the MTP incorporates all regional transportation projects and programs that are expected to be completed within the plan's horizon of 20-25 years.

The JJOHRTS FY 2025-2028 TIP developments and updates must be reviewed and adopted by the JJOHRTS Transportation Planning Committee (TPC), the MPO's policy committee that ensures that all transportation plans and programs are consistent with the adopted goals and objectives for the JJOHRTS area. As with all regional plan updates, the SETRPC conducts robust and inclusive public

involvement to provide stakeholders and the general public with the opportunity to participate in all decision-making.

The TIP contains the **Project Listings** section that includes those projects funded within the four-year period covered by the TIP and is divided into the following components:

- ➔ Federally Funded Highway Projects
- ➔ Grouped Projects
- ➔ Federally Funded Transit Projects
- ➔ State Funded Highway Projects (No projects listed in the JJOHRTS FY 2025-2028 TIP)
- ➔ Locally Funded Regionally Significant Projects (No projects listed in the JJOHRTS FY 2025-2028 TIP)

Other projects involving specific project development phases except for construction are contained within the following project lists:

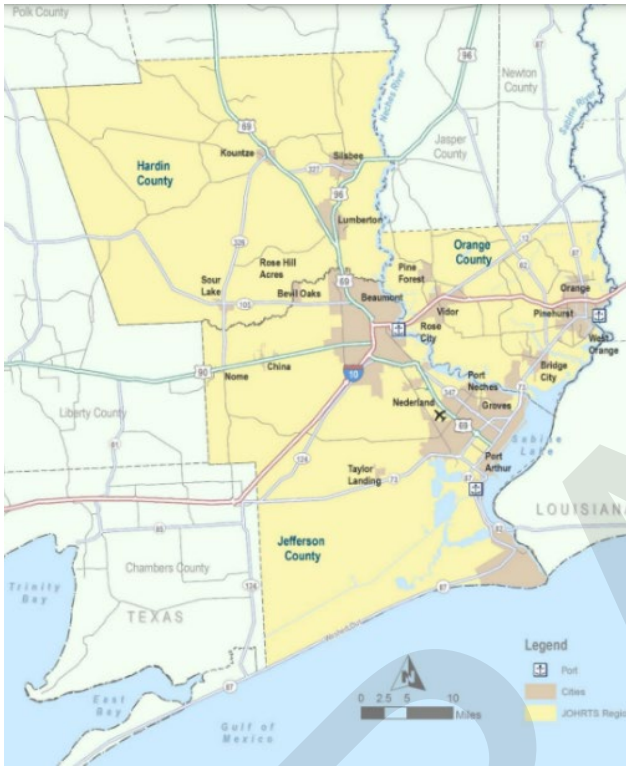
- ➔ Right-of-Way Projects (No projects listed in the JJOHRTS FY 2025-2028 TIP)
- ➔ Feasibility Studies (No projects listed in the JJOHRTS FY 2025-2028 TIP)

1.2 JJOHRTS Area Description

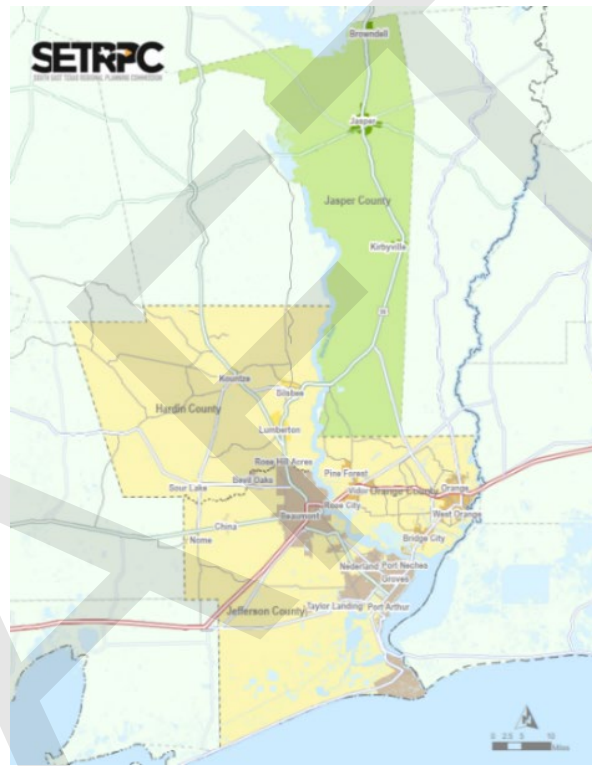
The JJOHRTS area consists of the four-county region of southeast Texas – Jasper, Jefferson, Orange, and Hardin Counties. The JJOHRTS metropolitan planning area is shown in Figure 1. Due to the predominance of the petrochemical industry and their significance as major manufacturing and industrial centers, the larger cities of Beaumont, Port Arthur, and Orange are often referred to as the “Golden Triangle.” The JJOHRTS area contains the Beaumont and Port Arthur urbanized areas, and is characterized by agricultural, industrial, and low-density residential and commercial land uses.

The population for the full JJOHRTS area was 429,311 persons in 2022 according to the U.S. Census Bureau 2022 American Community Survey 5-Year Estimates. The region has experienced stagnant population growth from 2018 through 2022. Over this five-year period, populations of all counties grew by less than 1%. Population growth in southeast Texas has paralleled the growth and decline of the petrochemical industry. Until the early 1980s, the region’s population grew rapidly. Jefferson County’s population grew rapidly until 1960, and Orange County until 1980. In the 1980s, Jefferson, Orange, and Hardin Counties experienced a decline in population and employment growth due to a downturn in the petrochemical industry. Since then, the population has remained stable except in Hardin County, which is continuing to grow.

Figure 1: SETRPC Metropolitan Planning Area



Current Three-County Region



Proposed Four-County Region

1.3 Federal and State Requirements

1.3.1 Bipartisan Infrastructure Law (BIL)

On November 15, 2021, President Joe Biden signed into law the Infrastructure Investment and Jobs Act (IIJA), referred to as the Bipartisan Infrastructure Law (BIL). The BIL provides \$550 billion over fiscal years 2022 through 2026 in new federal investment in infrastructure, including for roads, bridges, mass transit, water infrastructure, resilience, and broadband.

For highway programs specifically, the BIL provides \$350.8 billion over fiscal years 2022 through 2026. The BIL includes more than a dozen new highway programs, including:

- ➔ Formula: resilience, carbon reduction, bridges, and electric vehicle (EV) charging infrastructure.
- ➔ Discretionary: bridges, EV charging infrastructure, rural projects, resilience, wildlife crossings, and reconnecting communities.

Overall, the BIL focuses on safety, bridges, climate change, resilience, and project delivery.

The information in this section is provided to acknowledge the existence of the BIL and to note its implications for transportation planning. The emergence of the BIL does not represent an abandonment of the programs and planning requirements established under the *Fixing America's Surface Transportation (FAST) Act*, the *Safe, Accountable, Flexible and Efficient Transportation Equity Act: A Legacy for Users (SAFETEA-LU)* and *Moving Ahead for Progress in 21st Century (MAP-21)*, the previous federal transportation bills. In fact, many of the same programs and metropolitan planning requirements are continued under the BIL.

1.3.2 Fixing America's Surface Transportation (FAST) Act

The previous surface transportation funding bill, the *Fixing America's Surface Transportation (FAST) Act*, was signed into law by President Obama on December 4, 2015.

All transportation projects and programs must address the FAST Act planning factors in order to provide a safe, energy-efficient, and environmentally sound movement of persons and goods on the regional transportation system. These planning factors call for transportation planning to:

- 1) Support the economic vitality of the metropolitan area, especially by enabling global competitiveness, productivity, and efficiency;
- 2) Increase the safety of the transportation system for motorized and nonmotorized users;
- 3) Increase the security of the transportation system for motorized and nonmotorized users;
- 4) Increase the accessibility and mobility of people and for freight;

- 5) Protect and enhance the environment, promote energy conservation, improve the quality of life, and promote consistency between transportation improvements and state and local planned growth and economic development patterns
- 6) Enhance the integration and connectivity of the transportation system, across and between modes, for people and freight;
- 7) Promote efficient system management and operation;
- 8) Emphasize the preservation of the existing transportation system;
- 9) Improve the resiliency and reliability of the transportation system;
- 10) Reduce or mitigate stormwater impacts of surface transportation; and
- 11) Enhance travel and tourism.

The FAST Act introduced supplemental actions for all MPOs to remain in compliance with federal requirements. The SETRPC-MPO has taken the following actions to remain in compliance:

- 1) The Public Participation Plan (PPP) was updated to include a) public ports; b) private providers of transportation (including intercity bus operators, employer-based commuting programs, such as carpool program, vanpool program, transit benefits program, parking cash-out program, shuttle program, or telework program). (Ref: 23 CFR 450.316(a))
- 2) The MTP-2045 demonstrated consultation with agencies involved in a) tourism; b) natural disaster risk reduction. (Ref: 23 CFR 450.316(b))
- 3) The SETRPC-MPO, TxDOT, and the providers of public transportation (BMT, PAT, and SETT) jointly agreed upon and developed specific written provisions for cooperatively developing and sharing information related to: a) transportation performance data; b) the selection of performance targets; c) the reporting of performance targets; d) the reporting of performance to be used in tracking progress toward attainment of critical outcomes for the region of the MPO & the collection of data for the State asset management plan for the NHS. (Ref: 23 CFR 450.314(h))
- 4) The MTP-2045 incorporated two new planning factors within the metropolitan transportation planning process: a) Improve the resiliency and reliability of the transportation system and reduce or mitigate stormwater impacts of surface transportation; b) Enhance travel and tourism. (Ref: 23 CFR 450.206(a) (9&10) and 306(b) (9&10))
- 5) The MTP-2045 included an assessment of capital investment and other strategies to preserve the existing and future transportation system and reduce the vulnerability of the existing transportation infrastructure to natural disasters. (Ref: 23 CFR 450.324(f)(7)).

- 6) The MTP-2045 included a description of the (Federally required) performance measures and performance targets used in assessing the performance of the transportation system. (Ref: 23 CFR 450.324(f)(3))
- 7) The MTP-2045 included a system evaluation report evaluating the condition and performance of the transportation system with respect to the (Federally required) performance targets including progress achieved by the MPO toward the performance targets. (Ref: 23 CFR 450.324(f)(4))
- 8) The TIP includes (to the maximum extent practicable) a description of the anticipated effect of the TIP toward achieving the performance targets identified by the State in the long-range statewide transportation plan and by MPO in the MTP. (Ref: 23 CFR 450.218(q) and 326(d))
- 9) The TIP includes a linkage from the investment priorities in the TIP to achievement of performance targets in the plans. (Ref: 23 CFR 450.218(q) and 326(d)) The SETRPC-MPO continues to address these requirements through coordination, consultation, and implementation between the SETRPC-MPO and different agencies and stakeholder groups. By adhering to these requirements, the SETRPC-MPO continues to develop a safe, efficient, and resilient transportation network for all users.

1.3.3 Performance Management

In 2012, MAP-21 directed the United States Department of Transportation (USDOT) to establish a set of performance measures to increase the accountability and transparency of the federal highway and transit programs and improve project decision making through performance-based planning and programming by a rulemaking process. After national performance measures are established through a rulemaking, the state departments of transportation (DOTs) and transit providers must:

- ➔ Establish performance targets that reflect the national measures,
- ➔ Report on progress towards achieving those targets,
- ➔ Develop performance-based plans for safety and asset management, and
- ➔ Implement a performance-based approach to planning and programming.

Transportation performance management is a strategic approach that uses system data to make investment and policy decisions to achieve national performance goals. Monitoring progress towards achieving these national performance goals is accomplished by establishing performance targets for key performance measures. Using a performance-based approach, decision makers can apply key information and data to understand the consequences of investment decisions across transportation modes.

As part of performance management, recipients of federal aid highway funds will make transportation investments to achieve performance targets that make progress toward the following national goals shown in Table 1.

Table 1: National Performance Management Goals

Goal Area	National Goal
Safety	To achieve a significant reduction in traffic fatalities and serious injuries on all public roads
Infrastructure Condition	To maintain the highway infrastructure asset system in a state of good repair
Congestion Reduction	To achieve a significant reduction in congestion on the National Highway System
System Reliability	To improve the efficiency of the surface transportation system
Freight Movement and Economic Vitality	To improve the national freight network, strengthen the ability of rural communities to access national and international trade markets, and support regional economic development
Environmental Sustainability	To enhance the performance of the transportation system while protecting and enhancing the natural environment
Reduced Project Delivery Delays	To reduce project costs, promote jobs and the economy, and expedite the movement of people and goods by accelerating project completion through eliminating delays in the project development and delivery process, including reducing regulatory burdens and improving agencies' work practices

In a series of rulemakings, FHWA and FTA are establishing national performance measures in areas such as safety, infrastructure condition, system performance, and transit asset management. The *Final Rule on Statewide and Nonmetropolitan Transportation Planning and Metropolitan Transportation Planning* (May 27, 2016) established the requirement that states, MPOs, and transit providers use performance measures to document expectations for future performance. Each state/transit provider will have one year after the final rulemaking for each set of performance measures to establish performance targets. MPOs are required to establish performance targets within 180 days after the state of transit provider has established performance targets.

The U.S. Department of Transportation (USDOT) has published the following rulemakings which establish national performance measures for which state DOTs, transit providers, and MPOs must establish performance targets:

- ➔ Safety Performance Management Final Rule
- ➔ Infrastructure Condition Performance Management Final Rule
- ➔ System Performance Final Rule
- ➔ Transit Asset Management (TAM) Final Rule

The SETRPC-MPO will maintain awareness of the performance management process at both the federal and state level and will continue to implement performance targets at the MPO level as appropriate. The integration of performance management into the TIP is documented in **Chapter 7: Integration of Performance Measures**. If the process of implementing performance targets requires additions or changes to the MTP and TIP, the documents will be amended in the future.

1.3.4 TIP Financial Summary

Transportation legislation mandates fiscal responsibility in the preparation of all transportation plans and programs. In particular, the TIP is required to include a financial summary that outlines the source and amount of expected funds for all submitted projects. FHWA and FTA funding requirements also mandate that all highway and transit projects receiving federal, state, or locally significant funding be identified and prioritized in the TIP. A project may not be included in the TIP if full funding cannot be reasonably anticipated before the project is let for construction or implementation. The financial summary for this JJOHRTS FY 2025-2028 TIP is shown in **Chapter 4: Financial Summary** section of the document.

1.3.5 Public Involvement

Citizen involvement remains an important component of the transportation planning process in the JJOHRTS area. The SETRPC-MPO develops and maintains the Public Participation Plan (PPP), which provides the public an opportunity to contribute ideas and voice opinions on the preparation of all transportation plans and programs. As part of developing and/or revising the TIP, the SETRPC-MPO is required by federal regulations to provide the public with opportunities to be involved in the planning process. The following activities are outlined in the PPP for TIP public involvement:

For New TIP Developments:

- ➔ The new TIP requires a thirty-day public review and comment period.
- ➔ A formal public meeting is required in each county during the preparation of a new TIP.

For TIP Amendments or Updates:

- ➔ All TIP amendments and updates require a thirty-day public review and comment period.
- ➔ Formal public meetings are required when projects are added to or deleted from the TIP.

1.3.6 Title VI

The JJOHRTS PPP includes Title VI/Environmental Justice (EJ) principles on providing opportunities for potentially disadvantaged persons to participate in the planning process. In addition, the PPP supports Executive Order #13166 (Improving Access to Services for Persons with Limited English Proficiency). The SETRPC-MPO maintains a Title VI/Environmental Justice Program and a Limited English Proficiency Plan for the JJOHRTS region. The JJOHRTS PPP, Title VI/Environmental Justice Program, and Limited English Proficiency Plan ensure opportunities to increase communication and dialogue between decision-makers and the public.

1.3.7 Americans with Disabilities Act

The SETRPC-MPO promotes projects and programs that provide quality transportation services to disabled persons in southeast Texas (for example, paratransit services and pedestrian improvements). Although funding is not likely to increase between 2021 and 2024, South East Texas Transit (SETT), the area's rural transportation system, will strive to accommodate the increase in demand for its services that may occur.

Beaumont Municipal Transit (BMT) and Port Arthur Transit (PAT) will continue to enhance their paratransit services. Both BMT and PAT will consider replacing or purchasing paratransit vehicles upon receiving additional transit funds from the FTA, in accordance with their respective Transit Asset Management Plans.

1.3.8 Air Quality Standards

In southeast Texas, the petrochemical facilities, power plants, automobiles, and vegetation produce volatile organic compound (VOC) and nitrogen oxide (NOx) emissions that contribute to the formation of ozone, a harmful gas that degrades the quality of the air and damages the atmosphere. The 1990 Federal Clean Air Act amendments authorized the EPA to designate areas failing to meet the National Ambient Air Quality Standard (NAAQS) for ozone as nonattainment for the standard. The SETRPC-MPO promotes the development of transportation projects and programs that reduce VOC and NOx emissions and decrease the formation of ozone.

1.3.8.1 Attainment Status

The Beaumont-Port Arthur ozone maintenance area (Hardin, Jefferson, and Orange Counties) was re-designated from nonattainment to attainment-maintenance for the 1998 eight-hour ozone National Ambient Air Quality Standard (NAAQS), effective November 19, 2010. The area was initially designated attainment/unclassifiable for the subsequent 2008 and 2015 eight-hour ozone NAAQS and remains in attainment for both standards. When the 1997 eight-hour ozone NAAQS was revoked by the EPA, transportation conformity requirements for that standard were also revoked (effective April 6, 2015). Due to its designation as attainment/unclassifiable for the 2008 and 2016 eight-hour ozone NAAQS, the Beaumont-Port Arthur area has not been subject to transportation conformity requirements since 2015.

On February 16, 2018, the United States Court of Appeals for the District of Columbia Circuit issued an opinion in the case South Coast Air Quality Management District v. EPA, 882 F.3d 1138 (South

Coast II). The case was a challenge to EPA's 2008 eight-hour ozone NAAQS state implementation plan (SIP) requirements rule (80 FR 12264), which revoked the 1997 eight-hour ozone NAAQS as part of implementing the more stringent 2008 eight-hour ozone NAAQS. The court's decision vacated parts of the EPA's 2008 eight-hour ozone NAAQS SIP requirements rule, including waiving requirements for transportation conformity for maintenance areas under the revoked 1997 eight-hour ozone NAAQS. In response to the South Coast II decision, the EPA published Transportation Conformity Guidance for the South Coast II Court Decision on November 29, 2018. The guidance document was published to assist affected areas as they reestablished compliance with transportation conformity requirements under the revoked 1997 eight-hour ozone. NAAQS. Based on the November 2018 guidance, affected areas may demonstrate conformity if the following requirements are met:

- ➔ Use of latest planning assumptions;
- ➔ Interagency consultation;
- ➔ Fiscal constraint for the MTP and TIP; and
- ➔ Timely implementation of transportation control measures (TCM), if applicable.

Based on these regulations and court rulings, the JJOHRTS area is classified as in conformity for all air quality standards. The conformity determination from the United States Department of Transportation (USDOT) is shown in Figure 2.

Figure 2: TxDOT Conformity Determination



FEDERAL TRANSIT ADMINISTRATION
819 TAYLOR STREET, ROOM 14A02
FORT WORTH, TEXAS 76102-9003

FEDERAL HIGHWAY ADMINISTRATION
300 E. 8TH STREET, ROOM 826
AUSTIN, TEXAS 78701-3225

November 20, 2023

Refer to: HDA-TX

South East Texas Regional Planning Commission
Metropolitan Planning Organization (SETPRC-MPO)
for the Jefferson-Orange-Hardin Regional Transportation Study (JJOHRTS) Area
Transportation Conformity Determination
2045 Metropolitan Transportation Plan (2045 MTP) and
FY 2023-2026 Transportation Improvement Program (FY 2023-2026 TIP)

Mr. Marc D. Williams
Executive Director
Texas Department of Transportation
125 E. 11th Street
Austin, TX 78701-2483

Dear Mr. Williams:

We have reviewed the documentation supporting the transportation conformity determination for the 2045 Metropolitan Transportation Plan (2045 MTP) and the FY 2023-2026 Transportation Improvement Program (FY 2023-2026 TIP) adopted by the South East Texas Regional Planning Commission Metropolitan Planning Organization's (SETPRC-MPO) Transportation Planning Committee (TPC) on August 30, 2023. Based upon our review and consultation with the U.S. Environmental Protection Agency (EPA), the Texas Commission on Environmental Quality (TCEQ), and the Texas Department of Transportation (TxDOT), we hereby find:

- that the 2045 MTP and FY 2023-2026 TIP meet all the requirements for making a joint conformity determination under the Clean Air Act Amendments of 1990.

Additionally, we find:

- that the 2045 MTP satisfactorily complies with the requirements of 23 CFR §450.324 regarding the review and update of metropolitan transportation plans; and
- that the FY 2023-2026 TIP satisfactorily complies with the requirements of 23 CFR §450.326 regarding the update, public involvement, project inclusion, consistency with the plan, and fiscal constraint of TIPs.

The interagency consultative partners have indicated that they have no unresolved issues concerning this conformity determination in their letters dated: November 16, 2023, for TCEQ, November 16, 2023, for TxDOT, and November 17, 2023, for EPA. The conformity determination and procedures used to make this determination are in accordance with the provisions of the transportation conformity rule (40 CFR Parts 51 and 93), dated August 15, 1997, as amended.

This action restarts the time clock associated with the requirement to determine conformity no less frequently than every four years. Please note that this action does not restart the time clock associated with a five-year MTP update. Accordingly, an updated MTP and corresponding conformity determination is required by November 21, 2024.

The Federal Highway Administration (FHWA) acts as executive agent for the Federal Transit Administration (FTA) on metropolitan transportation plan and transportation improvement program air quality conformity determinations. Accordingly, this letter will serve as a joint FHWA/FTA conformity determination.

Should you have any questions concerning this action, please contact Jose Campos at Jose.Campos@dot.gov or (512) 536-5932, Barbara Maley at Barbara.Maley@dot.gov or (972) 561-8025 or Krystal Lastrape at Krystal.Lastrape@dot.gov or (512) 536-5936.

Sincerely yours,

Carl M. Highsmith

Acting Deputy Division Administrator

for

Edward Ofori

Acting Division Administrator

Electronic copies:

Federal Transit Administration, Region 6 (FTA-6)

David Bartels Kwasi Bosompem

Federal Highway Administration, Texas Division (FHWA-TX)

HDA

Al Alonzi Edward Ofori

PPD

Michael Leary Jose Campos

Barbara Maley Krystal Lastrape

OPS

Valeria Arocho (BMT)

Justin Ham (Major Projects)

United States Environmental Protection Agency, Region 6 (EPA)

Melanie Magee Jeff Riley

Texas Commission on Environmental Quality (TCEQ)

Donna Huff Jamie Zech

Texas Department of Transportation (TxDOT)

Transportation Planning and Programming Division (TPP)

Humberto ‘Tito’ Gonzalez, Jr.

Mildred Litchfield

Janie Temple Laura Norton

Casey Wells Phillip Tindall

Raymond Sanchez Mansour Shiraz

Environmental Affairs Division (ENV)

Doug Booher

Tim Wood Glendora Lopez

Public Transportation Division (PTN)

Eric Gleason Michael Dietz

Mark Sprick

Beaumont District (BMT)

Martin Gonzalez Nancy Peron

Beaumont Municipal Transit (BMT)

Claudia San Miguel

Port Arthur Transit (PAT)

Ivan Mitchell

South East Texas Transit (SETT)

D’Juana Fowler

South East Texas Regional Planning Commission

Metropolitan Planning Organization (SETPRC-MPO)

Commissioner Johnny Trahan Orange County; SETRPC-MPO Chairman

Bob Dickinson, Director, Transportation and Environmental Resources

1.4 TIP Project Selection Process

1.4.1 Project Sources

The project selection process for the TIP is considered a subset of the JJOHRTS Project Selection Process, which is a coordinated effort between the SETRPC-MPO and regional entities to identify and prioritize projects during each four-year MTP cycle. Projects included in the TIP are selected from the following sources:

- From last two fiscal years' projects of the previous TIP
- Projects that have not let for construction can also be advanced from earlier fiscal years of the previous TIP
- Projects from the financially constrained component of the MTP
- From the Texas Department of Transportation's (TxDOT) ten-year Unified Transportation Program (UTP), including environmental and feasibility studies
- Additional projects from local governments, transit agencies, and other member agencies

1.4.2 Selection Criteria

All selected projects must satisfy the following criteria:

- Be consistent with the JJOHRTS area long-range goals as defined in the current MTP
- Demonstrate support in achieving performance targets
- Have a committed match-funding source and cost estimate by the project sponsor
- Federal and state-funded projects must be located on a TxDOT / FHWA approved functional classification system

1.4.3 Submittal Content

Projects that are selected during a TIP update or through quarterly revisions need to include the following information:

- MPO Project ID (identification) number
- Control-Section-Job (CSJ) number
- Project name / location and limits
- Brief description of project
- Funding category and number
- Project costs (includes federal, state, and local contribution funds) [Also list federal and state funds that are apportioned by different funding sources]
- Let and Revision dates
- Project phase (if available)

1.4.4 Amendments

TIP revisions are typically conducted on a quarterly basis. Examples of changes that require a TIP revision include:

- ➔ Adding federally funded projects
- ➔ Adding regionally significant state funded projects
- ➔ Changing the estimated cost of a project that results in a 50% increase in cost and a cost that exceeds \$1.5 million
- ➔ Changes to project limits or scope of work for federally funded projects
- ➔ Changing the funding sources for a project from non-federal to federal funds

Examples of changes that do not require a TIP revision include:

- ➔ Changes to project identification numbers (such as Control-Section-Job (CSJ) numbers)
- ➔ Updating the project's let date
- ➔ Change in the estimated cost of a project that does one, but not both, of the following: a) exceeds 50% and b) results in a cost exceeding \$1.5 million
- ➔ Splitting or combining projects without modification to original project design concept and scope
- ➔ Modifying the project cost estimate without altering the limits or scope
- ➔ Moving a project from one federal funding category to another
- ➔ Moving a project from one state funding category to another
- ➔ Changing a project's funding source from federal to state funding
- ➔ Changes to projects within the "grouped" category

1.5 Project Listing Information

This section explains the attributes for the information provided in the project listing.

1.5.1 Control-Section-Job Number

A project identification number assigned by TxDOT for projects included in the UTP or their Project Development Program.

1.5.2 MPO ID Number

The MPO's assigned project identification number for the database tracking of all transportation projects listed in the JJOHRTS MTP and TIP. The following information provides a description of the Project ID numbers (with the first five digits as a constant identifier for project tracking, while the last four digits may be modified during the PSP).

Columns 1 & 2 (94026-F15E) list the last two digits of the year a project was first submitted into the MTP Project Selection Process.

Columns 3, 4, & 5 (94026-F15E) represent a sequential number assigned during the submittal year (number assigned to the project from the MPO's key list).

Column 6 (94026-F15E) identifies the primary funding source of the project: Federal [F], State [S], Local [L], and Transit [T].

Columns 7 and 8 (94026-F15E) identify the network year for the projected completion of the project.

Column 9 (94026-F15E) signifies whether the project is exempt [E], non-exempt [N], or in the planning stage [P].

Exceptions in MPO ID Number annotation:

Feasibility Study – A feasibility study may be conducted prior to identifying a specific project; these work efforts are coded as 'FEA' in Columns 6, 7, and 8. There is no network year assigned to a feasibility study.

Environmental Study – An environmental study is a project that is undergoing preliminary engineering and environmental analysis consistent with early project development; these work efforts are coded as 'NEA' in Columns 6, 7, and 8. There is no network year assigned to an environmental study.

Right-of-Way – The right-of-way project development phase involves the acquisition of land to accommodate a proposed improvement. This phase follows environmental study and precedes construction. This work effort is coded as 'ROW' in Columns 6, 7, and 8. There is no network year assigned to this project type.

Exempt Projects - Exempt projects are not typically modeled and are coded as 'XX' in Columns 7 and 8 as there is no network assignment. Some exempt projects, such as adding a continuous left turn lane, can be coded in the travel demand model; therefore, this type of project may have a network year assigned. Exempt projects must meet the criteria listed in Chapter 7.

Projects beyond MTP plan year – These projects consist of two types. One type are those projects for which funding is identified to be available during the MTP plan period but that will not be operational within the plan period. The second type are projects included in the Unconstrained Component list of the MTP.

- 1) Projects with identified funding that are not expected to be operational during the MTP plan period do not have a network year assignment. Columns 7 and 8 are marked as 'NN'.
- 2) Projects in the Unconstrained Component have 'UNC' entered in Columns 6, 7, and 8.

1.5.3 Funding Category

Refer to Chapter 5 for a description of the funding categories used to classify federal and state funding of transportation projects and programs.

1.5.4 Revision Date

The Revision Date marks when a project or program is adopted into the state's short-range implementation plan.

1.5.5 Phase

Describes the current development phase(s) of a transportation project or program: Preliminary Engineering [E], Right of Way Acquisition [R], Construction [C], and Transfer [T].

1.6 Project Listings

The following chapters include project listings for FY 2025-2028 as indicated below:

- Chapter 1: Planning Process
- Chapter 2: Federally Funded Highway Projects
- Chapter 3: Grouped Projects
- Chapter 4: Federally Funded Transit Projects
- Chapter 5: Financial Summary
- Chapter 6: Funding Categories
- Chapter 7: Exempt Project Criteria
- Chapter 8: Integration of Performance Measures
- Chapter 9: Public Involvement Documentation
- Chapter 10: Resolution
- Chapter 11: MPO Self-Certification



Chapter 2: Federally Funded Highway Projects

DRAFT

**JJOHRTS FY 2025-2028 TRANSPORTATION IMPROVEMENT PROGRAM
BEAUMONT DISTRICT
SETRPC METROPOLITAN PLANNING ORGANIZATION
FEDERALLY FUNDED HIGHWAY PROJECTS**

DISTRICT	MPO	COUNTY	CSJ	LET FY	HWY	PHASE	City	YOE COSTS
Beaumont	SETRPC	Jefferson	0920-00-149	11/6/2024	Various			\$1,560,000.00
LIMITS FROM	DISTRICT WIDE						REVISION DAT	FUNDING CAT(S) 12,10
LIMITS TO								
PROJECT DESCR	Pedestrian, Sidewalks & Curb Ramps							

TOTAL PROJECT COST INFORMATION			AUTHORIZED FUNDING BY CATEGORY/SHARE				
		COST OF APPROVED PHASES	CATEGORY	FEDERAL	STATE	LOCAL	TOTAL
PREL ENG	\$194,970.00						
ROW PURC	\$0.00						
CONSTR	\$1,560,000.00		12	\$1,104,000.00	\$276,000.00	\$0.00	\$1,380,000.00
CONSTR EN	\$0.00		10	\$144,000.00	\$36,000.00	\$0.00	\$180,000.00
CONTING	\$0.00	\$1,560,000.00					
INDIRECT	\$0.00						
TOTAL COST	\$1,754,970.00						

PROJECT NAME FY 24 DISTRICTWIDE ADA PROJECT

GROUPED CSJ

COMMENT(S)

**JJOHRTS FY 2025-2028 TRANSPORTATION IMPROVEMENT PROGRAM
BEAUMONT DISTRICT
SETRPC METROPOLITAN PLANNING ORGANIZATION
FEDERALLY FUNDED HIGHWAY PROJECTS**

DISTRICT	MPO	COUNTY	CSJ	LET FY	HWY	PHASE	City	YOE COSTS
Beaumont	SETRPC	Jefferson	0920-38-288	11/15/2024	HOUSTON			\$2,008,383.00
LIMITS FROM	CORNER OF HOUSTON AVE AND						REVISION DAT	FUNDING CAT(S) 3
LIMITS TO	4TH STREET							
PROJECT DESCR	Intersection & Operational Imprv						MPO PROJ ID	

TOTAL PROJECT COST INFORMATION

AUTHORIZED FUNDING BY CATEGORY/SHARE

			CATEGORY	FEDERAL	STATE	LOCAL	TOTAL
PREL ENG	\$0.00	COST OF APPROVED PHASES					
ROW PURC	\$0.00						
CONSTR	\$2,008,383.00		3	\$0.00	\$1,931,137.50	\$0.00	\$1,931,137.50
CONSTR EN	\$0.00		3	\$0.00	\$0.00	\$77,245.50	\$77,245.50
CONTING	\$0.00		\$2,008,383.00				
INDIRECT	\$0.00						
TOTAL COST	\$2,008,383.00						

PROJECT NAME PORT OF PORT ARTHUR TRUCK QUEUING AREA AND LAYDOWN YARD I

GROUPED CSJ

COMMENT(S)

**JJOHRTS FY 2025-2028 TRANSPORTATION IMPROVEMENT PROGRAM
BEAUMONT DISTRICT
SETRPC METROPOLITAN PLANNING ORGANIZATION
FEDERALLY FUNDED HIGHWAY PROJECTS**

DISTRICT	MPO	COUNTY	CSJ	LET FY	HWY	PHASE	City	YOE COSTS
Beaumont	SETRPC	Jefferson	0920-38-291	11/16/2024	AUSTIN			\$1,515,653.50
LIMITS FROM	CORNER OF REV. DR. RANSOM HOWARD DRIVE						REVISION DAT	FUNDING CAT(S) 3
LIMITS TO	AND AUSTIN AVENUE							
PROJECT DESCR	Intersection & Operational Imprv						MPO PROJ ID	

TOTAL PROJECT COST INFORMATION

AUTHORIZED FUNDING BY CATEGORY/SHARE

			CATEGORY	FEDERAL	STATE	LOCAL	TOTAL
PREL ENG	\$0.00	COST OF APPROVED PHASES					
ROW PURC	\$0.00						
CONSTR	\$1,515,653.50		3	\$0.00	\$1,515,652.50	\$0.00	\$1,515,652.50
CONSTR EN	\$0.00		3	\$0.00	\$0.00	\$1.00	\$1.00
CONTING	\$0.00		\$1,515,653.50				
INDIRECT	\$0.00						
TOTAL COST	\$1,515,653.50						

PROJECT NAME PORT OF PORT ARTHUR-CONSTRUCT A QUEUING AREA AT THE CORNE

GROUPED CSJ

COMMENT(S)

**JJOHRTS FY 2025-2028 TRANSPORTATION IMPROVEMENT PROGRAM
BEAUMONT DISTRICT
SETRPC METROPOLITAN PLANNING ORGANIZATION
FEDERALLY FUNDED HIGHWAY PROJECTS**

DISTRICT	MPO	COUNTY	CSJ	LET FY	HWY	PHASE	City	YOE COSTS
Beaumont	SETRPC	Hardin	0065-06-067	5/1/2025	US 69			\$33,600,000.00
LIMITS FROM	US 96, SOUTH						REVISION DAT	FUNDING CAT(S) 2,4,1
LIMITS TO	JEFFERSON C/L							
PROJECT DESCR	Widen Freeway						MPO PROJ ID	

TOTAL PROJECT COST INFORMATION			AUTHORIZED FUNDING BY CATEGORY/SHARE				
		COST OF APPROVED PHASES	CATEGORY	FEDERAL	STATE	LOCAL	TOTAL
PREL ENG	\$1,613,937.50						
ROW PURC	\$0.00						
CONSTR	\$33,600,000.00		2	\$47,119.99	\$5,842,879.01	\$0.00	\$5,889,999.00
CONSTR EN	\$0.00		4	\$22,168,000.00	\$5,542,000.00	\$0.00	\$27,710,000.00
CONTING	\$0.00	\$33,600,000.00	1	\$0.80	\$0.20	\$0.00	\$1.00
INDIRECT	\$0.00						
TOTAL COST	\$35,213,937.50						

PROJECT NAME WIDEN FREEWAY FROM 4 TO 6 LANES

GROUPED CSJ

COMMENT(S)

**JJOHRTS FY 2025-2028 TRANSPORTATION IMPROVEMENT PROGRAM
BEAUMONT DISTRICT
SETRPC METROPOLITAN PLANNING ORGANIZATION
FEDERALLY FUNDED HIGHWAY PROJECTS**

DISTRICT	MPO	COUNTY	CSJ	LET FY	HWY	PHASE	City	YOE COSTS
Beaumont	SETRPC	Jefferson	0065-07-065	5/1/2025	US 69			\$6,720,000.00
LIMITS FROM	HARDIN C/L, SOUTH						REVISION DAT	FUNDING CAT(S) 2,1
LIMITS TO	TRAM ROAD							
PROJECT DESCR	Widen Freeway						MPO PROJ ID	

TOTAL PROJECT COST INFORMATION

AUTHORIZED FUNDING BY CATEGORY/SHARE

		COST OF APPROVED PHASES	CATEGORY	FEDERAL	STATE	LOCAL	TOTAL
PREL ENG	\$312,375.00						
ROW PURC	\$0.00						
CONSTR	\$6,720,000.00		2	\$5,375,999.20	\$1,343,999.80	\$0.00	\$6,719,999.00
CONSTR EN	\$0.00		1	\$0.80	\$0.20	\$0.00	\$1.00
CONTING	\$0.00	\$6,720,000.00					
INDIRECT	\$0.00						
TOTAL COST	\$7,032,375.00						

PROJECT NAME WIDEN FREEWAY FROM 4 TO 6 LANES

GROUPED CSJ

COMMENT(S)

**JJOHRTS FY 2025-2028 TRANSPORTATION IMPROVEMENT PROGRAM
BEAUMONT DISTRICT
SETRPC METROPOLITAN PLANNING ORGANIZATION
FEDERALLY FUNDED HIGHWAY PROJECTS**

DISTRICT	MPO	COUNTY	CSJ	LET FY	HWY	PHASE	City	YOE COSTS
Beaumont	SETRPC	Jefferson	0920-00-171	5/1/2025	Various			\$1,196,000.00
LIMITS FROM	DISTRICT WIDE						REVISION DAT	FUNDING CAT(S) 10
LIMITS TO								
PROJECT DESCR	Transportation Non-Roadway							

TOTAL PROJECT COST INFORMATION

AUTHORIZED FUNDING BY CATEGORY/SHARE

			CATEGORY	FEDERAL	STATE	LOCAL	TOTAL
PREL ENG	\$0.00	COST OF APPROVED PHASES					
ROW PURC	\$0.00						
CONSTR	\$1,196,000.00		10	\$956,800.00	\$239,200.00	\$0.00	\$1,196,000.00
CONSTR EN	\$0.00						
CONTING	\$0.00		\$1,196,000.00				
INDIRECT	\$0.00						
TOTAL COST	\$1,196,000.00						

PROJECT NAME TRUCK PARKING (FY 25)

GROUPED CSJ

COMMENT(S)

**JJOHRTS FY 2025-2028 TRANSPORTATION IMPROVEMENT PROGRAM
BEAUMONT DISTRICT
SETRPC METROPOLITAN PLANNING ORGANIZATION
FEDERALLY FUNDED HIGHWAY PROJECTS**

DISTRICT	MPO	COUNTY	CSJ	LET FY	HWY	PHASE	City	YOE COSTS
Beaumont	SETRPC	Jefferson	0920-00-133	1/1/2026	Various			\$11,200,001.00
LIMITS FROM	Districtwide						REVISION DAT	FUNDING CAT(S) 12,1
LIMITS TO								
PROJECT DESCR	Safety Improvement Projects							

TOTAL PROJECT COST INFORMATION			AUTHORIZED FUNDING BY CATEGORY/SHARE				
		COST OF APPROVED PHASES	CATEGORY	FEDERAL	STATE	LOCAL	TOTAL
PREL ENG	\$503,034.00						
ROW PURC	\$0.00						
CONSTR	\$11,200,001.00		12	\$8,960,000.00	\$2,240,000.00	\$0.00	\$11,200,000.00
CONSTR EN	\$0.00		1	\$0.80	\$0.20	\$0.00	\$1.00
CONTING	\$0.00	\$11,200,001.00					
INDIRECT	\$0.00						
TOTAL COST	\$11,703,035.00						

PROJECT NAME IH-10 Drainage Improvements

GROUPED CSJ

COMMENT(S)

**JJOHRTS FY 2025-2028 TRANSPORTATION IMPROVEMENT PROGRAM
BEAUMONT DISTRICT
SETRPC METROPOLITAN PLANNING ORGANIZATION
FEDERALLY FUNDED HIGHWAY PROJECTS**

DISTRICT	MPO	COUNTY	CSJ	LET FY	HWY	PHASE	City	YOE COSTS
Beaumont	SETRPC	Jefferson	0920-00-172	5/1/2026	Various			\$1,297,597.00
LIMITS FROM	DISTRICT WIDE						REVISION DAT	FUNDING CAT(S) 10
LIMITS TO								
PROJECT DESCR	Transportation Non-Roadway							

TOTAL PROJECT COST INFORMATION			AUTHORIZED FUNDING BY CATEGORY/SHARE				
		COST OF APPROVED PHASES	CATEGORY	FEDERAL	STATE	LOCAL	TOTAL
PREL ENG	\$0.00						
ROW PURC	\$0.00						
CONSTR	\$1,297,597.00		10	\$1,038,077.60	\$259,519.40	\$0.00	\$1,297,597.00
CONSTR EN	\$0.00						
CONTING	\$0.00	\$1,297,597.00					
INDIRECT	\$0.00						
TOTAL COST	\$1,297,597.00						

PROJECT NAME TRUCK PARKING (FY 26)

GROUPED CSJ

COMMENT(S)

**JJOHRTS FY 2025-2028 TRANSPORTATION IMPROVEMENT PROGRAM
BEAUMONT DISTRICT
SETRPC METROPOLITAN PLANNING ORGANIZATION
FEDERALLY FUNDED HIGHWAY PROJECTS**

DISTRICT	MPO	COUNTY	CSJ	LET FY	HWY	PHASE	City	YOE COSTS
Beaumont	SETRPC	Jasper	0064-07-044	1/1/2027	US 96			\$61,810,001.00
LIMITS FROM	SABINE CO/L, SOUTH						REVISION DAT	
LIMITS TO	0.8 MILES NORTH OF RE 255						FUNDING CAT(S) 4,1,10	
PROJECT DESCR	Widen Non-Freeway						MPO PROJ ID	

TOTAL PROJECT COST INFORMATION

AUTHORIZED FUNDING BY CATEGORY/SHARE

		COST OF APPROVED PHASES	CATEGORY	FEDERAL	STATE	LOCAL	TOTAL
PREL ENG	\$2,450,000.00						
ROW PURC	\$0.00						
CONSTR	\$59,360,001.00		4	\$47,488,000.00	\$11,872,000.00	\$0.00	\$59,360,000.00
CONSTR EN	\$0.00		1	\$0.80	\$0.20	\$0.00	\$1.00
CONTING	\$0.00	\$61,810,001.00	10	\$0.00	\$2,450,000.00	\$0.00	\$2,450,000.00
INDIRECT	\$0.00						
TOTAL COST	\$61,810,001.00						

PROJECT NAME WIDEN FROM 2 TO 4 LANES DIVIDED

GROUPED CSJ

COMMENT(S)

**JJOHRTS FY 2025-2028 TRANSPORTATION IMPROVEMENT PROGRAM
BEAUMONT DISTRICT
SETRPC METROPOLITAN PLANNING ORGANIZATION
FEDERALLY FUNDED HIGHWAY PROJECTS**

DISTRICT	MPO	COUNTY	CSJ	LET FY	HWY	PHASE	City	YOE COSTS
Beaumont	SETRPC	Jasper	0064-08-062	1/1/2027	US 96			\$5,208,001.00
LIMITS FROM	0.8 MILES NORTH OF RE 255, SOUTH						REVISION DAT	FUNDING CAT(S) 4,1,10
LIMITS TO	RE 255							
PROJECT DESCR	Widen Non-Freeway						MPO PROJ ID	

TOTAL PROJECT COST INFORMATION

AUTHORIZED FUNDING BY CATEGORY/SHARE

		COST OF APPROVED PHASES	CATEGORY	FEDERAL	STATE	LOCAL	TOTAL
PREL ENG	\$392,000.00						
ROW PURC	\$0.00						
CONSTR	\$4,816,001.00		10	\$0.00	\$392,000.00	\$0.00	\$392,000.00
CONSTR EN	\$0.00		4	\$3,852,800.00	\$963,200.00	\$0.00	\$4,816,000.00
CONTING	\$0.00	\$5,208,001.00	1	\$0.80	\$0.20	\$0.00	\$1.00
INDIRECT	\$0.00						
TOTAL COST	\$5,208,001.00						

PROJECT NAME WIDEN FROM 2 TO 4 LANES DIVIDED

GROUPED CSJ

COMMENT(S)

**JJOHRTS FY 2025-2028 TRANSPORTATION IMPROVEMENT PROGRAM
BEAUMONT DISTRICT
SETRPC METROPOLITAN PLANNING ORGANIZATION
FEDERALLY FUNDED HIGHWAY PROJECTS**

DISTRICT	MPO	COUNTY	CSJ	LET FY	HWY	PHASE	City	YOE COSTS
Beaumont	SETRPC	Jasper	0200-04-020	1/1/2027	US 69			\$20,160,001.00
LIMITS FROM	ANGELINA COUNTY LINE						REVISION DAT	FUNDING CAT(S) 4,1
LIMITS TO	TYLER COUNTY LINE							
PROJECT DESCR	Widen Non-Freeway						MPO PROJ ID	

TOTAL PROJECT COST INFORMATION			AUTHORIZED FUNDING BY CATEGORY/SHARE				
			CATEGORY	FEDERAL	STATE	LOCAL	TOTAL
PREL ENG	\$0.00	COST OF APPROVED PHASES					
ROW PURC	\$76770.00						
CONSTR	\$20,160,001.00		4	\$16,128,000.00	\$4,032,000.00	\$0.00	\$20,160,000.00
CONSTR EN	\$0.00		1	\$0.80	\$0.20	\$0.00	\$1.00
CONTING	\$0.00		\$20,160,001.00				
INDIRECT	\$0.00						
TOTAL COST	\$20,236,771.00						

PROJECT NAME RECONSTRUCT EXISTING 2 LANE HIGHWAY TO 4 LANES DIVIDED

GROUPED CSJ

COMMENT(S)

**JJOHRTS FY 2025-2028 TRANSPORTATION IMPROVEMENT PROGRAM
BEAUMONT DISTRICT
SETRPC METROPOLITAN PLANNING ORGANIZATION
FEDERALLY FUNDED HIGHWAY PROJECTS**

DISTRICT	MPO	COUNTY	CSJ	LET FY	HWY	PHASE	City	YOE COSTS
Beaumont	SETRPC	Jefferson	0200-14-060	1/1/2027	US 69			\$91,680,001.00
LIMITS FROM	IH 10, south						REVISION DAT	FUNDING CAT(S) 12,2,4,1
LIMITS TO	SH 347							
PROJECT DESCR	Widen Road - Add Lanes						MPO PROJ ID	

TOTAL PROJECT COST INFORMATION			AUTHORIZED FUNDING BY CATEGORY/SHARE				
		COST OF APPROVED PHASES	CATEGORY	FEDERAL	STATE	LOCAL	TOTAL
PREL ENG	\$3,449,286.00						
ROW PURC	\$0.00						
CONSTR	\$3,449,286.00		1	\$0.80	\$0.20	\$0.00	\$1.00
CONSTR EN	\$0.00		12	\$16,000,000.00	\$4,000,000.00	\$0.00	\$20,000,000.00
CONTING	\$0.00	\$91,680,001.00	2	\$45,464,000.00	\$11,366,000.00	\$0.00	\$56,830,000.00
INDIRECT	\$0.00		4	\$11,880,000.00	\$2,970,000.00	\$0.00	\$14,850,000.00
TOTAL COST	\$95,129,287.00						

PROJECT NAME US 69 Widening - IH-10 to SH 347

GROUPED CSJ

COMMENT(S)

**JJOHRTS FY 2025-2028 TRANSPORTATION IMPROVEMENT PROGRAM
BEAUMONT DISTRICT
SETRPC METROPOLITAN PLANNING ORGANIZATION
FEDERALLY FUNDED HIGHWAY PROJECTS**

DISTRICT	MPO	COUNTY	CSJ	LET FY	HWY	PHASE	City	YOE COSTS
Beaumont	SETRPC	Hardin	0339-04-036	1/1/2027	SH 105			\$84,784,001.00
LIMITS FROM	.10 MILES EAST OF SH 326						REVISION DAT	FUNDING CAT(S) 12,2,1
LIMITS TO	PINE ISLAND BAYOU							
PROJECT DESCR	Widen Road - Add Lanes						MPO PROJ ID	

TOTAL PROJECT COST INFORMATION			AUTHORIZED FUNDING BY CATEGORY/SHARE				
		COST OF APPROVED PHASES	CATEGORY	FEDERAL	STATE	LOCAL	TOTAL
PREL ENG	\$0.00						
ROW PURC	\$1405000.00						
CONSTR	\$84,784,001.00		12	\$0.00	\$46,584,000.00	\$0.00	\$46,584,000.00
CONSTR EN	\$0.00		2	\$0.00	\$38,200,000.00	\$0.00	\$38,200,000.00
CONTING	\$0.00	\$84,784,001.00	1	\$0.00	\$1.00	\$0.00	\$1.00
INDIRECT	\$0.00						
TOTAL COST	\$86,189,001.00						

PROJECT NAME SH 105 (SH 326 to Pine Is Bayou)-Widen

GROUPED CSJ

COMMENT(S)

**JJOHRTS FY 2025-2028 TRANSPORTATION IMPROVEMENT PROGRAM
BEAUMONT DISTRICT
SETRPC METROPOLITAN PLANNING ORGANIZATION
FEDERALLY FUNDED HIGHWAY PROJECTS**

DISTRICT	MPO	COUNTY	CSJ	LET FY	HWY	PHASE	City	YOE COSTS
Beaumont	SETRPC	Jefferson	0920-00-173	5/1/2027	Various			\$1,247,696.00
LIMITS FROM	DISTRICT WIDE						REVISION DAT	FUNDING CAT(S) 10
LIMITS TO								
PROJECT DESCR	Transportation Non-Roadway							

TOTAL PROJECT COST INFORMATION			AUTHORIZED FUNDING BY CATEGORY/SHARE				
			CATEGORY	FEDERAL	STATE	LOCAL	TOTAL
PREL ENG	\$0.00	COST OF APPROVED PHASES					
ROW PURC	\$0.00						
CONSTR	\$1,247,696.00		10	\$998,156.80	\$249,539.20	\$0.00	\$1,247,696.00
CONSTR EN	\$0.00						
CONTING	\$0.00		\$1,247,696.00				
INDIRECT	\$0.00						
TOTAL COST	\$1,247,696.00						

PROJECT NAME TRUCK PARKING (FY 27)

GROUPED CSJ

COMMENT(S)

**JJOHRTS FY 2025-2028 TRANSPORTATION IMPROVEMENT PROGRAM
BEAUMONT DISTRICT
SETRPC METROPOLITAN PLANNING ORGANIZATION
FEDERALLY FUNDED HIGHWAY PROJECTS**

DISTRICT	MPO	COUNTY	CSJ	LET FY	HWY	PHASE	City	YOE COSTS
Beaumont	SETRPC	Jefferson	0920-00-150	1/1/2028	Various			\$1,568,432.00
LIMITS FROM	DISTRICT WIDE						REVISION DAT	FUNDING CAT(S) DA
LIMITS TO								
PROJECT DESCR	Traffic Control Devices							

TOTAL PROJECT COST INFORMATION			AUTHORIZED FUNDING BY CATEGORY/SHARE				
		COST OF APPROVED PHASES	CATEGORY	FEDERAL	STATE	LOCAL	TOTAL
PREL ENG	\$77,305.61						
ROW PURC	\$0.00						
CONSTR	\$1,568,432.00		DA	\$1,254,745.60	\$313,686.40	\$0.00	\$1,568,432.00
CONSTR EN	\$0.00						
CONTING	\$0.00	\$1,568,432.00					
INDIRECT	\$0.00						
TOTAL COST	\$1,645,737.61						

PROJECT NAME DISTRICT WIDE-ITS UPGRADE to install 40 CCTV Cameras and 8 DMSs

GROUPED CSJ

COMMENT(S)

**JJOHRTS FY 2025-2028 TRANSPORTATION IMPROVEMENT PROGRAM
BEAUMONT DISTRICT
SETRPC METROPOLITAN PLANNING ORGANIZATION
FEDERALLY FUNDED HIGHWAY PROJECTS**

DISTRICT	MPO	COUNTY	CSJ	LET FY	HWY	PHASE	City	YOE COSTS
Beaumont	SETRPC	Jefferson	0028-13-142	3/1/2028	IH 10			\$104,500,000.00
LIMITS FROM	US 90, EAST						REVISION DAT	FUNDING CAT(S) DA,DA
LIMITS TO	AT UPRR							
PROJECT DESCR	Bridge Replacement						MPO PROJ ID	

TOTAL PROJECT COST INFORMATION

AUTHORIZED FUNDING BY CATEGORY/SHARE

PREL ENG	ROW PURC	CONSTR	CONSTR EN	CONTING	INDIRECT	TOTAL COST	CATEGORY	FEDERAL	STATE	LOCAL	TOTAL
							DA	\$0.00	\$0.00	\$0.00	\$104,500,000.00
				\$104,500,000.00							

PROJECT NAME IH 10-UPRR OVERPASS-REPLACE BRIDGE AND APPROACHES

GROUPED CSJ

COMMENT(S)

Chapter 3: Grouped Projects



Grouped Projects

What are Grouped Projects?

FHWA allows STIP projects to be grouped. Within the allowances, groupable projects are those of a common type/scope and those not considered to be of appropriate scale for individual identification in a given program year. Examples include but are not limited to minor rehabilitation, preventative maintenance, and safety.

Grouping is allowable by type of work, not type of funding.

Benefits of using Grouped Projects?

- More efficient programming
- TIP/STIP Revision not needed

How are Grouped Projects shown in the TIP?

- MPOs must use the correct FHWA-Approved Project Grouping in their TIP (see [Grouped Project Allowances Table](#)).
- Individual projects eligible for statewide project groupings may continue to be included in the MPO TIP for informational purposes only and should be clearly annotated as such and may be included as an appendix.

How are Grouped Projects shown on the Financial Summary?

- Programming amounts for Grouped Projects are not included on TIP Financial Summary; they are captured in the STIP Financial Summary (statewide).
- MPO TIPs should indicate that funding for Grouped Projects is constrained to reasonably expected sources of Federal, State, and local funding consistent with the MPO's financial plan.

Project grouping is encouraged (e.g., Grouped CSJ for PE or Grouped CSJ for ROW), where allowable.

Note: All phases of *added capacity* projects in non-attainment areas must be listed *individually* in the STIP.



FHWA-Approved Grouped Project Allowance

PROPOSED CSJ	GROUPED PROJECT CATEGORY	DEFINITION
5000-00-950	PE-Preliminary Engineering	Preliminary Engineering for any project except added capacity projects in a nonattainment area. Includes activities which do not involve or lead directly to construction, such as planning and research activities; grants for training; engineering to define the elements of a proposed action or alternatives so that social, economic, and environmental effects can be assessed.
5000-00-951	Right of Way	Right of Way acquisition for any project except added capacity projects in a nonattainment area. Includes relocation assistance, hardship acquisition and protective buying.
5000-00-952 5000-00-957 5000-00-958	Preventive Maintenance and Rehabilitation	Projects to include pavement repair to preserve existing pavement so that it may achieve its designed loading. Includes seal coats, overlays, resurfacing, restoration and rehabilitation done with existing ROW. Also includes modernization of a highway by reconstruction, adding shoulders or adding auxiliary lanes (e.g., parking, weaving, turning, climbing, passing, non-added capacity) or drainage improvements associated with rehabilitation [See Note 3].
5000-00-953	Bridge Replacement and Rehabilitation	Projects to replace and/or rehabilitate functionally obsolete or structurally deficient bridges.
5000-00-954	Railroad Grade Separations	Projects to construct or replace existing highway-railroad grade crossings and to rehabilitate and/or replace deficient railroad underpasses, resulting in no added capacity.
5800-00-950	Safety	Projects to include the construction or replacement/rehabilitation of guard rails, median barriers, crash cushions, pavement markings, skid treatments, medians, lighting improvements, highway signs, curb ramps, railroad/highway crossing warning devices, fencing, intersection improvements (e.g., turn lanes), signalization projects and interchange modifications. Also includes projects funded via the Federal Hazard Elimination Program, Federal Railroad Signal Safety Program, or Access Managements projects, except those that result in added capacity.





PROPOSED CSJ	GROUPED PROJECT CATEGORY	DEFINITION
5000-00-956	Landscaping	Projects consisting of typical right-of-way landscape development, establishment and aesthetic improvements to include any associated erosion control and environmental mitigation activities.
5800-00-915	Intelligent Transportation System Deployment	Highway traffic operation improvement projects including the installation of ramp metering control devices, variable message signs, traffic monitoring equipment and projects in the Federal ITS/IVHS programs.
5000-00-916	Bicycle and Pedestrian	Projects including bicycle and pedestrian lanes, paths and facilities (e.g., sidewalks, shared use paths, side paths, trails, bicycle boulevards, curb extensions, bicycle parking facilities, bikeshare facilities, etc.). Safe Routes to School non-infrastructure related activities (e.g. enforcement, tools, and education programs).
5000-00-917	Safety Rest Areas and Truck Weigh Stations	Construction and improvement of rest areas, and truck weigh stations.
5000-00-918	Transit Improvements and Programs	Projects include the construction and improvement of small passenger shelters and information kiosks. Also includes the construction and improvement of rail storage/maintenance facilities bus transfer facilities where minor amounts of additional land are required and there is not a substantial increase in the number of users. Also includes transit operating assistance, preventative maintenance of transit vehicles and facilities, acquisition of third-party transit services, and transit marketing, and mobility management/coordination. Additionally includes the purchase of new buses and rail cars to replace existing vehicles or for minor expansions of the fleet [See Note 4].
5000-00-919	Recreational Trails Program	Off-Highway Vehicle (OHV), Equestrian, Recreational Water/Paddling Trails and related facilities; Recreational Trails related education and safety programs.

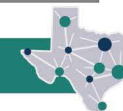
Note 1: Projects eligible for grouping include associated project phases (Preliminary Engineering, Right-Of-Way and Construction).

Note 2: Projects funded with Congestion Mitigation Air Quality funding require a Federal eligibility determination, and are not approved to be grouped.

Note 3: Passing lanes include "SUPER 2" lanes consistent with TxDOT's Roadway Design Manual.

Note 4: In PM10 and PM2.5 nonattainment or maintenance areas, such projects may be grouped only if they are in compliance with control measures in the applicable implementation plan.

Note 5: Projects funded as part of the Recreational Trails Program (RTP) and Transportation Alternatives (TA) Program consistent with the Grouped Project category definitions may be grouped. RTP or TA funded projects that are not consistent with the Grouped Project category definitions must be individually noted in the Transportation Improvement Program (TIP) and State Transportation Improvement Program (STIP). Road diet projects may not be grouped.



**JJOHRTS FY 2025-2028 TRANSPORTATION IMPROVEMENT PROGRAM BEAUMONT DISTRICT
SETRPC METROPOLITAN PLANNING ORGANIZATION
GROUPED PROJECTS**

DISTRICT	COUNTY	CSJ	HWY	PHASE	CITY	LET YR	Project Sponsor	EST COST
Beaumont	Jefferson	0028-06-088	US 90			2025		\$199,200.00
LIMITS FROM:		LIBERTY COUNTY LINE			LIMITS TO: 0.38 MILES EAST OF FM 365(EB ONLY)			
DESCRIPTION:		2025 Seal Coat-US 90(LIBERTY COUNTY LINE TO 0.38 MILES EAST OF FM 365) EAST BOUND ONLY						
REMARKS:		MPO PROJ ID: A00178424						

DISTRICT	COUNTY	CSJ	HWY	PHASE	CITY	LET YR	Project Sponsor	EST COST
Beaumont	Jefferson	0028-06-097	US 90			2025		\$573,100.00
LIMITS FROM:		4.65 MILES EAST OF FM 365, EAST			LIMITS TO: MEEKER RD.(EB ONLY)			
DESCRIPTION:		2025 Seal Coat-US 90(4.65 MILES EAST OF FM 365, EAST TO MEEKER RD.) EAST BOUND ONLY						
REMARKS:		MPO PROJ ID: A00207382						

DISTRICT	COUNTY	CSJ	HWY	PHASE	CITY	LET YR	Project Sponsor	EST COST
Beaumont	Hardin	0065-15-006	FM 3513			2025		\$368,416.00
LIMITS FROM:		EAST CHANCE CUT OFF, SOUTH			LIMITS TO: MITCHELL ROAD			
DESCRIPTION:		2025 Seal Coat-FM 3513(EAST CHANCE CUT OFF, SOUTH TO MITCHELL ROAD)						
REMARKS:		MPO PROJ ID: A00187247						

DISTRICT	COUNTY	CSJ	HWY	PHASE	CITY	LET YR	Project Sponsor	EST COST
Beaumont	Hardin	0200-10-089	US 69			2025		\$591,100.00
LIMITS FROM:		WEST WALTON ROAD, SOUTH			LIMITS TO: FM 421			
DESCRIPTION:		2025 Seal Coat-US 69 (WEST WALTON ROAD, SOUTH TO FM 421)						
REMARKS:		MPO PROJ ID: A00178540						

DISTRICT	COUNTY	CSJ	HWY	PHASE	CITY	LET YR	Project Sponsor	EST COST
Beaumont	Jasper	0243-01-052	SH 62			2025		\$279,100.00
LIMITS FROM:		1.596 MILES SOUTH OF FM 2246, SOUTH			LIMITS TO: NEWTON COUNTY LINE			
DESCRIPTION:		2025 Seal Coat-SH 62(1.596 MILES SOUTH OF FM 2246, SOUTH TO NEWTON COUNTY LINE)						
REMARKS:		MPO PROJ ID: A00178441						

**JJOHRTS FY 2025-2028 TRANSPORTATION IMPROVEMENT PROGRAM BEAUMONT DISTRICT
SETRPC METROPOLITAN PLANNING ORGANIZATION
GROUPED PROJECTS**

DISTRICT	COUNTY	CSJ	HWY	PHASE	CITY	LET YR	Project Sponsor	EST COST
Beaumont	Jasper	0243-01-056	SH 62			2025		\$1,746,558.00

LIMITS FROM: US 96, SOUTH **LIMITS TO:** 1.596 MILES SOUTH OF FM 2246

DESCRIPTION: 2025 Seal Coat-SH 62 (US 96, SOUTH TO 1.596 MILES SOUTH OF FM 2246)

REMARKS: **MPO PROJ ID:** A00196298

DISTRICT	COUNTY	CSJ	HWY	PHASE	CITY	LET YR	Project Sponsor	EST COST
Beaumont	Orange	0499-03-065	SH 12			2025		\$346,100.00

LIMITS FROM: IH 10 FRONTAGE ROAD, EAST **LIMITS TO:** FM 1132

DESCRIPTION: 2025 Seal Coat-SH 12 (IH 10 FRONTAGE ROAD, EAST TO FM 1132)

REMARKS: **MPO PROJ ID:** A00178489

DISTRICT	COUNTY	CSJ	HWY	PHASE	CITY	LET YR	Project Sponsor	EST COST
Beaumont	Orange	0499-03-066	SH 12			2025		\$494,820.00

LIMITS FROM: SH 62, EAST **LIMITS TO:** NEWTON COUNTY LINE

DESCRIPTION: 2025 Seal Coat-SH 12 (SH 62-NEWTON COUNTY LINE)

REMARKS: **MPO PROJ ID:** A00187292

DISTRICT	COUNTY	CSJ	HWY	PHASE	CITY	LET YR	Project Sponsor	EST COST
Beaumont	Jefferson	0667-02-116	FM 366			2025		\$284,550.00

LIMITS FROM: 600 FEET SOUTH OF SH347, SOUTH **LIMITS TO:** 100 FEET SOUTH OF NEDERLAND AVE

DESCRIPTION: 2025 Seal Coat-FM 366 (600 FEET SOUTH OF SH 347, SOUTH TO 100 FEET SOUTH OF NEDERLAND AVE)

REMARKS: **MPO PROJ ID:** A00178440

DISTRICT	COUNTY	CSJ	HWY	PHASE	CITY	LET YR	Project Sponsor	EST COST
Beaumont	Orange	0689-02-037	FM 105			2025		\$427,926.00

LIMITS FROM: FM 408, EAST **LIMITS TO:** SH 87

DESCRIPTION: 2025 Seal Coat-FM 105 (FM 408, EAST TO SH 87)

REMARKS: **MPO PROJ ID:** A00178500

**JJOHRTS FY 2025-2028 TRANSPORTATION IMPROVEMENT PROGRAM BEAUMONT DISTRICT
SETRPC METROPOLITAN PLANNING ORGANIZATION
GROUPED PROJECTS**

DISTRICT	COUNTY	CSJ	HWY	PHASE	CITY	LET YR	Project Sponsor	EST COST
Beaumont	Orange	0689-03-008	FM 105			2025		\$28,237.00

LIMITS FROM: SH 87, EAST

LIMITS TO: 0.415 MILES EAST OF SH 87

DESCRIPTION: 2025 Seal Coat-FM 105 (SH 87, EAST TO 0.415 MILES EAST OF SH 87)

REMARKS:

MPO PROJ ID: A00178518

DISTRICT	COUNTY	CSJ	HWY	PHASE	CITY	LET YR	Project Sponsor	EST COST
Beaumont	Orange	0883-02-094	FM 105			2025		\$616,247.00

LIMITS FROM: BYRON ROAD, EAST

LIMITS TO: FM 1135

DESCRIPTION: 2025 Seal Coat-FM 105 (BYRON ROAD, EAST TO FM 1135)

REMARKS:

MPO PROJ ID: A00196294

DISTRICT	COUNTY	CSJ	HWY	PHASE	CITY	LET YR	Project Sponsor	EST COST
Beaumont	Orange	3057-01-012	FM 105			2025		\$58,186.00

LIMITS FROM: 0.415 MILES EAST OF SH 87, SOUTH

LIMITS TO: FM 1006

DESCRIPTION: 2025 Seal Coat-FM 105 (0.415 MILES EAST OF SH 87, SOUTH TO FM 1006)

REMARKS:

MPO PROJ ID: A00178526

DISTRICT	COUNTY	CSJ	HWY	PHASE	CITY	LET YR	Project Sponsor	EST COST
Beaumont	Orange	0920-30-090	CR 831			2025		\$300,000.00

LIMITS FROM: S. BURTON RD @ SANDY CREEK

LIMITS TO: (STR#201810AA0237001)

DESCRIPTION: S BURTON RD(CR 831) @ SANDY CREEK BRIDGE REPLACEMENT
(STR#201810AA0237001)

REMARKS:

MPO PROJ ID: A00178374

DISTRICT	COUNTY	CSJ	HWY	PHASE	CITY	LET YR	Project Sponsor	EST COST
Beaumont	Orange	0920-30-091	CR 144			2025		\$750,000.00

LIMITS FROM: TERRY RD @ ANDERSON GULLY

LIMITS TO: (STR#201810AA0364002)

DESCRIPTION: TERRY RD(CR 144) @ ANDERSON GULLY-BRIDGE REPLACEMENT
(STR#201810AA0364002)

REMARKS:

MPO PROJ ID: A00178376

**JJOHRTS FY 2025-2028 TRANSPORTATION IMPROVEMENT PROGRAM BEAUMONT DISTRICT
SETRPC METROPOLITAN PLANNING ORGANIZATION
GROUPED PROJECTS**

DISTRICT	COUNTY	CSJ	HWY	PHASE	CITY	LET YR	Project Sponsor	EST COST
Beaumont	Orange	0920-30-092	CR 651			2025		\$300,000.00
LIMITS FROM:			NORTH TRAM RD@CANEEY CREEK		LIMITS TO: (STR#201810AA0443001)			
DESCRIPTION: NORTH TRAM RD(CR 651) @ CANEEY CREEK-BRIDGE REPLACEMENT (STR#201810AA0443001)								
REMARKS:							MPO PROJ ID: A00178379	

DISTRICT	COUNTY	CSJ	HWY	PHASE	CITY	LET YR	Project Sponsor	EST COST
Beaumont	Hardin	1194-02-020	FM 943			2025		\$11,970,000.00
LIMITS FROM:			2 MILES SOUTH OF POLK COUNTY LINE, SOUTH		LIMITS TO: FM 1003			
DESCRIPTION: FM 943-(2 MILES SOUTH OF POLK COUNTY LINE, SOUTH TO FM 1003) Full depth base repair, and overlay								
REMARKS:							MPO PROJ ID: A00187963	

DISTRICT	COUNTY	CSJ	HWY	PHASE	CITY	LET YR	Project Sponsor	EST COST
Beaumont	Jefferson	0200-14-104	US 69			2025		\$12,400,000.00
LIMITS FROM:			SH 124, SOUTH		LIMITS TO: W. FLORIDA AVE			
DESCRIPTION: US 69 FR-SH 124 to W Florida Ave (NBFR) 10" CRCP BB CSB LTS								
REMARKS:							MPO PROJ ID: A00187938	

DISTRICT	COUNTY	CSJ	HWY	PHASE	CITY	LET YR	Project Sponsor	EST COST
Beaumont	Jefferson	0200-14-105	US 69			2025		\$4,500,000.00
LIMITS FROM:			ERIE STREET, SOUTH		LIMITS TO: SS 93			
DESCRIPTION: US 69 FR-ERIE STREET, SOUTH TO SS 93(SBFR) 10" CRCP BB CSB LTS								
REMARKS:							MPO PROJ ID: A00187942	

DISTRICT	COUNTY	CSJ	HWY	PHASE	CITY	LET YR	Project Sponsor	EST COST
Beaumont	Jefferson	0920-38-287	ERIE ST			2025		\$1,000,000.00
LIMITS FROM:			AT LNVA CANAL		LIMITS TO: STR#201240AA0336002			
DESCRIPTION: ERIE ST@ LNVA CANAL-BRIDGE REPLACEMENT								
REMARKS:							MPO PROJ ID: A00183477	

**JJOHRTS FY 2025-2028 TRANSPORTATION IMPROVEMENT PROGRAM BEAUMONT DISTRICT
SETRPC METROPOLITAN PLANNING ORGANIZATION
GROUPED PROJECTS**

DISTRICT	COUNTY	CSJ	HWY	PHASE	CITY	LET YR	Project Sponsor	EST COST
Beaumont	Jefferson	0920-38-297	CR 140			2025		\$260,000.00

LIMITS FROM: @ PIGNUT GULLY **LIMITS TO:** EXISTING STR#(201240AA0224001)

DESCRIPTION: MASON RD.(CR 140) @ PIGNUT GULLY-BRIDGE REPLACE

REMARKS: **MPO PROJ ID:** A00184805

DISTRICT	COUNTY	CSJ	HWY	PHASE	CITY	LET YR	Project Sponsor	EST COST
Beaumont	Jefferson	0920-00-158	Various			2025		\$4,000,000.00

LIMITS FROM: DISTRICT WIDE **LIMITS TO:** .

DESCRIPTION: FY 25-DISTRICT WIDE-Address Bridge FUAs

REMARKS: **MPO PROJ ID:** A00196602

DISTRICT	COUNTY	CSJ	HWY	PHASE	CITY	LET YR	Project Sponsor	EST COST
Beaumont	Jefferson	0920-00-162	Various			2025		\$5,000,000.00

LIMITS FROM: DISTRICT WIDE **LIMITS TO:** .

DESCRIPTION: FY 25-DISTRICT WIDE-Overhead Sign Replacement

REMARKS: **MPO PROJ ID:** A00196607

DISTRICT	COUNTY	CSJ	HWY	PHASE	CITY	LET YR	Project Sponsor	EST COST
Beaumont	Jefferson	0920-00-166	Various			2025		\$4,000,000.00

LIMITS FROM: DISTRICT WIDE **LIMITS TO:** .

DESCRIPTION: FY 25-DISTRICT WIDE-PAVEMENT MARKINGS/Specified Location Safety Re-striping

REMARKS: **MPO PROJ ID:** A00196613

DISTRICT	COUNTY	CSJ	HWY	PHASE	CITY	LET YR	Project Sponsor	EST COST
Beaumont	Jasper	0920-12-049	CR 139			2025		\$585,000.00

LIMITS FROM: CR 139 @ BIG SANDY CREEK **LIMITS TO:** EXISTING (STR#201220AA0291002)

DESCRIPTION: CR 139 @ BIG SANDY CREEK-BRIDGE REPLACE

REMARKS: **MPO PROJ ID:** A00190132

**JJOHRTS FY 2025-2028 TRANSPORTATION IMPROVEMENT PROGRAM BEAUMONT DISTRICT
SETRPC METROPOLITAN PLANNING ORGANIZATION
GROUPED PROJECTS**

DISTRICT	COUNTY	CSJ	HWY	PHASE	CITY	LET YR	Project Sponsor	EST COST
Beaumont	Jasper	2120-01-029	FM 2246			2025		\$3,100,000.00
LIMITS FROM: FM 2246 at Dognash Gully			LIMITS TO: STR 201220212001006					
DESCRIPTION: FM 2246 at Dognash Gully (STR 201760212001006) REPLACE BRIDGE AND APPROACHES								
REMARKS:							MPO PROJ ID: A00186187	

DISTRICT	COUNTY	CSJ	HWY	PHASE	CITY	LET YR	Project Sponsor	EST COST
Beaumont	Jefferson	0739-02-183	IH 10			2025		\$3,600,000.00
LIMITS FROM: HAMSHIRE ROAD, EAST			LIMITS TO: NORTH FORK TAYLOR BAYOU					
DESCRIPTION: IH 10FR (HAMSHIRE ROAD, EAST TO NORTH FORK TAYLOR BAYOU) Widen, Cmt Treat existing and new base, OCST, SP-C								
REMARKS:							MPO PROJ ID: A00196618	

DISTRICT	COUNTY	CSJ	HWY	PHASE	CITY	LET YR	Project Sponsor	EST COST
Beaumont	Jasper	0213-08-094	US 190			2025		\$45,143.00
LIMITS FROM: 0.1 MI W OF FM 777, EAST			LIMITS TO: 0.1 MI E OF FM 777					
DESCRIPTION: BMT_US0190_1 (2021 HSIP) INSTALL ADVANCED WARNING SIGNALS AND SIGNS (INTERSECTION)								
REMARKS:							MPO PROJ ID: A00184051	

DISTRICT	COUNTY	CSJ	HWY	PHASE	CITY	LET YR	Project Sponsor	EST COST
Beaumont	Jasper	0243-01-053	SH 62			2025		\$25,086.00
LIMITS FROM: 0.1MI N OF FM 2246, SOUTH			LIMITS TO: 0.1MI S OF FM 2246					
DESCRIPTION: BMT_SH0062_1(2021 HSIP)INSTALL ADVANCED WARNING SIGNALS AND SIGNS (INTERSECTION)								
REMARKS:							MPO PROJ ID: A00184054	

DISTRICT	COUNTY	CSJ	HWY	PHASE	CITY	LET YR	Project Sponsor	EST COST
Beaumont	Jefferson	0306-03-137	SH 87			2025		\$152,708.00
LIMITS FROM: 0.1 MI NORTH OF 9TH AVENUE, SOUTH			LIMITS TO: 0.1 MI SOUTH OF 9TH AVENUE					
DESCRIPTION: BMT_SH0087_1(2021 HSIP) IMPROVE TRAFFIC SIGNAL, SAFETY LIGHTING AT INTERSECTION								
REMARKS:							MPO PROJ ID: A00184105	

**JJOHRTS FY 2025-2028 TRANSPORTATION IMPROVEMENT PROGRAM BEAUMONT DISTRICT
SETRPC METROPOLITAN PLANNING ORGANIZATION
GROUPED PROJECTS**

DISTRICT	COUNTY	CSJ	HWY	PHASE	CITY	LET YR	Project Sponsor	EST COST
Beaumont	Jefferson	0307-01-156	SH 87			2025		\$138,644.00
LIMITS FROM:		0.1 MI NORTH OF SS 215, SOUTH			LIMITS TO:		0.1 MI SOUTH OF SS 215	
DESCRIPTION: BMT_SH0087_2 (2021 HSIP) IMPROVE TRAFFIC SIGNAL, SAFETY LIGHTING AT INTERSECTION								
REMARKS:							MPO PROJ ID: A00184097	

DISTRICT	COUNTY	CSJ	HWY	PHASE	CITY	LET YR	Project Sponsor	EST COST
Beaumont	Orange	0784-04-027	FM 1131			2025		\$3,035,727.00
LIMITS FROM:		JASPER COUNTY LINE, SOUTH			LIMITS TO:		FM 105 S	
DESCRIPTION: FM 1131-(JASPER COUNTY LINE, SOUTH TO FM 105 S) Construct Paved Shoulders (1-4 ft)								
REMARKS:							MPO PROJ ID: A00197896	

DISTRICT	COUNTY	CSJ	HWY	PHASE	CITY	LET YR	Project Sponsor	EST COST
Beaumont	Jasper	3197-01-011	RE 255			2025		\$4,100,000.00
LIMITS FROM:		US 96, EAST			LIMITS TO:		NEWTON COUNTY LINE	
DESCRIPTION: RE 255 (US 96, EAST TO NEWTON COUNTY LINE) Base Repair, spot LU, and SP-C								
REMARKS:							MPO PROJ ID: A00196626	

DISTRICT	COUNTY	CSJ	HWY	PHASE	CITY	LET YR	Project Sponsor	EST COST
Beaumont	Orange	0243-03-070	SH 62			2025		\$33,233.00
LIMITS FROM:		0.398 MI N OF FM 1078			LIMITS TO:		0.1 MI N OF FM 1078	
DESCRIPTION: BMT_SH0062_1(2022 HSIP) INSTALL CHEVRONS (CURVE)								
REMARKS:							MPO PROJ ID: A00192959	

DISTRICT	COUNTY	CSJ	HWY	PHASE	CITY	LET YR	Project Sponsor	EST COST
Beaumont	Jefferson	0920-38-294	9TH AVE			2025		\$346,141.00
LIMITS FROM:		0.012 MI SOUTH OF TURTLE CREEK, NOR			LIMITS TO:		0.012 MI NORTH OF TURTLE CREEK	
DESCRIPTION: PA_NinthAve_1 (2021 HSIP) 9TH AVE AT TURTLE CREEK (IMPROVE TRAFFIC SIGNAL, SAFETY LIGHTING AT INTERSECTION)								
REMARKS:							MPO PROJ ID: A00184303	

**JJOHRTS FY 2025-2028 TRANSPORTATION IMPROVEMENT PROGRAM BEAUMONT DISTRICT
SETRPC METROPOLITAN PLANNING ORGANIZATION
GROUPED PROJECTS**

DISTRICT	COUNTY	CSJ	HWY	PHASE	CITY	LET YR	Project Sponsor	EST COST
Beaumont	Jefferson	0920-38-295	9TH AVE			2025		\$234,902.00
LIMITS FROM:		0.032 MI SOUTH OF PROCTOR ST., NORTH			LIMITS TO: 0.032 MI NORTH OF PROCTOR ST			
DESCRIPTION:		PA_NinthAve_2 (2021 HSIP)9TH AVE AT PROCTOR ST (IMPROVE TRAFFIC SIGNAL, SAFETY LIGHTING AT INTERSECTION)						
REMARKS:		MPO PROJ ID: A00184317						

DISTRICT	COUNTY	CSJ	HWY	PHASE	CITY	LET YR	Project Sponsor	EST COST
Beaumont	Jefferson	0920-38-296	WOODWORTH			2025		\$329,055.00
LIMITS FROM:		0.16 MI SOUTH OF PROCTOR ST., NORTH			LIMITS TO: 0.16 MI NORTH OF PROCTOR ST.			
DESCRIPTION:		PA_WOODWORTH BLVD (2021 HSIP) AT PROCTOR ST (IMPROVE TRAFFIC SIGNAL, SAFETY LIGHTING AT INTERSECTION)						
REMARKS:		MPO PROJ ID: A00184318						

DISTRICT	COUNTY	CSJ	HWY	PHASE	CITY	LET YR	Project Sponsor	EST COST
Beaumont	Orange	1284-01-083	FM 1130			2025		\$226,862.00
LIMITS FROM:		0.56 MI E OF MORRIS RD			LIMITS TO: 0.81 MI E OF MORRIS RD			
DESCRIPTION:		BMT_FM1130_1(2022 HSIP) INSTALL LED FLASHING CHEVRONS (CURVE)						
REMARKS:		MPO PROJ ID: A00193030						

DISTRICT	COUNTY	CSJ	HWY	PHASE	CITY	LET YR	Project Sponsor	EST COST
Beaumont	Orange	1284-01-085	FM 1130			2025		\$2,703,987.00
LIMITS FROM:		FM 1136, EAST			LIMITS TO: 4.24 MILES			
DESCRIPTION:		FM 1130-(FM 1136, EAST TO 4.24 MILES) Construct Paved Shoulders (1-4 ft)						
REMARKS:		MPO PROJ ID: A00197887						

DISTRICT	COUNTY	CSJ	HWY	PHASE	CITY	LET YR	Project Sponsor	EST COST
Beaumont	Orange	2562-01-025	FM 1442			2025		\$226,541.00
LIMITS FROM:		0.04 MI S OF BESSIE HEIGHTS			LIMITS TO: 0.05 MI N OF NATIONAL DR			
DESCRIPTION:		BMT_FM1442_1 (2022 HSIP) INSTALL LED FLASHING CHEVRONS (CURVE)						
REMARKS:		MPO PROJ ID: A00193034						

**JJOHRTS FY 2025-2028 TRANSPORTATION IMPROVEMENT PROGRAM BEAUMONT DISTRICT
SETRPC METROPOLITAN PLANNING ORGANIZATION
GROUPED PROJECTS**

DISTRICT	COUNTY	CSJ	HWY	PHASE	CITY	LET YR	Project Sponsor	EST COST
Beaumont	Jefferson	0028-07-059	US 90			2025		\$1,000,000.00
LIMITS FROM: @ HILLEBRANDT BAYOU			LIMITS TO: STR#20-124-0-0028-07-044					
DESCRIPTION: US 90 @ HILLEBRANDT BAYOU (Deck Repair / Rehabilitation) STR#20-124-0-0028-07-044								
REMARKS:							MPO PROJ ID: A00197100	

DISTRICT	COUNTY	CSJ	HWY	PHASE	CITY	LET YR	Project Sponsor	EST COST
Beaumont	Jefferson	0028-07-060	US 90			2025		\$1,000,000.00
LIMITS FROM: @ CALDWOOD CUTOFF			LIMITS TO: STR#20-124-0-0028-07-063					
DESCRIPTION: US 90 @ CALDWOOD CUTOFF (STR#20-124-0-0028-07-063) Deck Repair / Rehabilitation								
REMARKS:							MPO PROJ ID: A00197103	

DISTRICT	COUNTY	CSJ	HWY	PHASE	CITY	LET YR	Project Sponsor	EST COST
Beaumont	Orange	0028-15-060	SH 87			2025		\$1,000,000.00
LIMITS FROM: @ ADAMS BAYOU			LIMITS TO: STR#20-181-0-0028-15-061					
DESCRIPTION: SH 87(@ ADAMS BAYOU)BRIDGE REHAB								
REMARKS:							MPO PROJ ID: A00197116	

DISTRICT	COUNTY	CSJ	HWY	PHASE	CITY	LET YR	Project Sponsor	EST COST
Beaumont	Orange	0243-04-061	SH 62			2025		\$1,454,127.00
LIMITS FROM: 0.513 MI N OF FM 105			LIMITS TO: 0.12 MI N OF SH 87					
DESCRIPTION: BMT_SH0062_3 (2022 HSIP) SAFETY LIGHTING								
REMARKS:							MPO PROJ ID: A00192961	

DISTRICT	COUNTY	CSJ	HWY	PHASE	CITY	LET YR	Project Sponsor	EST COST
Beaumont	Jefferson	0739-02-181	IH 10			2025		\$1,214,095.00
LIMITS FROM: 0.65 MI WEST OF FM 365, EAST			LIMITS TO: 0.60 MI EAST OF FM 365					
DESCRIPTION: BMT_IH0010_2(2021 HSIP) SAFETY LIGHTING								
REMARKS:							MPO PROJ ID: A00184092	

**JJOHRTS FY 2025-2028 TRANSPORTATION IMPROVEMENT PROGRAM BEAUMONT DISTRICT
SETRPC METROPOLITAN PLANNING ORGANIZATION
GROUPED PROJECTS**

DISTRICT	COUNTY	CSJ	HWY	PHASE	CITY	LET YR	Project Sponsor	EST COST
Beaumont	Jefferson	0920-00-171	Various			2025		\$1,150,000.00

LIMITS FROM: DISTRICT WIDE

LIMITS TO: .

DESCRIPTION: TRUCK PARKING (FY 25)

REMARKS:

MPO PROJ ID: A00199364

DISTRICT	COUNTY	CSJ	HWY	PHASE	CITY	LET YR	Project Sponsor	EST COST
Beaumont	Jefferson	0920-38-292	OWLEN F			2025		\$197,500.00

LIMITS FROM: DELAWARE STREET, NORTH

LIMITS TO: EASTEX FREEWAY

DESCRIPTION: BMT_Dowlen_1 (2021 HSIP) INTERCONNECT SIGNALS (DELAWARE ST TO EASTEX FREEWAY)

REMARKS:

MPO PROJ ID: A00184187

DISTRICT	COUNTY	CSJ	HWY	PHASE	CITY	LET YR	Project Sponsor	EST COST
Beaumont	Jefferson	0920-38-293	OWLEN F			2025		\$142,500.00

LIMITS FROM: HWY 90, NORTH

LIMITS TO: GLADYS AVE

DESCRIPTION: BMT_Dowlen_2(2021 HSIP) INTERCONNECT SIGNALS (HWY 90 TO GLADYS)

REMARKS:

MPO PROJ ID: A00184189

DISTRICT	COUNTY	CSJ	HWY	PHASE	CITY	LET YR	Project Sponsor	EST COST
Beaumont	Orange	1286-01-021	FM 1078			2025		\$6,238,628.00

LIMITS FROM: SH 62, EAST

LIMITS TO: FM 1130

DESCRIPTION: FM 1078-(SH 62, EAST TO FM 1130) Milled Edgeline Rumble Strips, Provide Additional Surface Width, Milled Centerline Rumble Strips

REMARKS:

MPO PROJ ID: A00197881

DISTRICT	COUNTY	CSJ	HWY	PHASE	CITY	LET YR	Project Sponsor	EST COST
Beaumont	Jasper	0064-08-064	US 96			2026		\$2,000,000.00

LIMITS FROM: RE 255, SOUTH

LIMITS TO: FM 2799

DESCRIPTION: 2026 Seal Coat-US 96 (RE 255, SOUTH TO FM 2799)

REMARKS:

MPO PROJ ID: A00187394

**JJOHRTS FY 2025-2028 TRANSPORTATION IMPROVEMENT PROGRAM BEAUMONT DISTRICT
SETRPC METROPOLITAN PLANNING ORGANIZATION
GROUPED PROJECTS**

DISTRICT	COUNTY	CSJ	HWY	PHASE	CITY	LET YR	Project Sponsor	EST COST
Beaumont	Jasper	0065-01-060	US 96			2026		\$77,564.00
LIMITS FROM:			150' SOUTH OF US 190, SOUTH			LIMITS TO: 0.39 MILES SOUTH OF US 190		
DESCRIPTION: 2026 Seal Coat-US 96 (150' SOUTH OF US 190, SOUTH TO 0.39 MILES SOUTH OF US 190)								
REMARKS:							MPO PROJ ID: A00187343	

DISTRICT	COUNTY	CSJ	HWY	PHASE	CITY	LET YR	Project Sponsor	EST COST
Beaumont	Jasper	0065-01-061	US 96			2026		\$101,011.00
LIMITS FROM:			FM 2799, SOUTH			LIMITS TO: US 190		
DESCRIPTION: 2026 Seal Coat-US 96(FM 2799, SOUTH TO US 190)								
REMARKS:							MPO PROJ ID: A00187378	

DISTRICT	COUNTY	CSJ	HWY	PHASE	CITY	LET YR	Project Sponsor	EST COST
Beaumont	Hardin	0065-14-030	BU 96F			2026		\$190,072.00
LIMITS FROM:			US 96, WEST			LIMITS TO: FM 92		
DESCRIPTION: 2026 Seal Coat-BU 96F(US 96, WEST TO FM 92)								
REMARKS:							MPO PROJ ID: A00187606	

DISTRICT	COUNTY	CSJ	HWY	PHASE	CITY	LET YR	Project Sponsor	EST COST
Beaumont	Jasper	0213-08-096	US 190			2026		\$539,100.00
LIMITS FROM:			2.0 MILES WEST OF SH 63(WEST), EAST			LIMITS TO: FM 252		
DESCRIPTION: 2026 Seal Coat-US 190(2.0 MILES WEST OF SH 63(WEST), EAST TO FM 252)								
REMARKS:							MPO PROJ ID: A00187353	

DISTRICT	COUNTY	CSJ	HWY	PHASE	CITY	LET YR	Project Sponsor	EST COST
Beaumont	Jasper	0214-01-038	SH 63			2026		\$43,762.00
LIMITS FROM:			US 190, EAST			LIMITS TO: 0.156 MILES EAST OF US 190		
DESCRIPTION: 2026 Seal Coat-SH 63(US 190-0.16miEAST)								
REMARKS:							MPO PROJ ID: A00187346	

**JJOHRTS FY 2025-2028 TRANSPORTATION IMPROVEMENT PROGRAM BEAUMONT DISTRICT
SETRPC METROPOLITAN PLANNING ORGANIZATION
GROUPED PROJECTS**

DISTRICT	COUNTY	CSJ	HWY	PHASE	CITY	LET YR	Project Sponsor	EST COST
Beaumont	Jasper	0244-02-101	SH 63			2026		\$613,764.00
LIMITS FROM: 0.2 MILES WEST OF FM 2799, EAST			LIMITS TO: US 190					
DESCRIPTION: 2026 Seal Coat-SH 63 (0.2 MILES WEST OF FM 2799, EAST TO US 190)								
REMARKS:							MPO PROJ ID: A00187352	

DISTRICT	COUNTY	CSJ	HWY	PHASE	CITY	LET YR	Project Sponsor	EST COST
Beaumont	Jasper	0244-02-102	SH 63			2026		\$2,056,175.00
LIMITS FROM: ANGELINA COUNTY LINE, SOUTH			LIMITS TO: 0.20 MILES WEST OF FM 2799					
DESCRIPTION: 2026 Seal Coat-SH 63 (ANGELINA COUNTY LINE, SOUTH TO 0.20 MILES WEST OF FM 2799)								
REMARKS:							MPO PROJ ID: A00207772	

DISTRICT	COUNTY	CSJ	HWY	PHASE	CITY	LET YR	Project Sponsor	EST COST
Beaumont	Jasper	0244-03-065	US 190			2026		\$462,767.00
LIMITS FROM: BNSF RR OVERPASS, EAST			LIMITS TO: US 190					
DESCRIPTION: 2026 Seal Coat-US 190 (BNSF RR OVERPASS, EAST TO US 190)								
REMARKS:							MPO PROJ ID: A00187349	

DISTRICT	COUNTY	CSJ	HWY	PHASE	CITY	LET YR	Project Sponsor	EST COST
Beaumont	Jefferson	0368-02-048	SH 124			2026		\$302,330.00
LIMITS FROM: 0.1 MILES SOUTH OF FM 365, SOUTH			LIMITS TO: SH 73					
DESCRIPTION: 2026 Seal Coat-SH 124 (0.1 MILES SOUTH OF FM 365, SOUTH TO SH 73)								
REMARKS:							MPO PROJ ID: A00187510	

DISTRICT	COUNTY	CSJ	HWY	PHASE	CITY	LET YR	Project Sponsor	EST COST
Beaumont	Hardin	0601-01-065	SH 326			2026		\$364,988.00
LIMITS FROM: SH 105, SOUTH			LIMITS TO: JEFFERSON COUNTY LINE					
DESCRIPTION: 2026 Seal Coat-SH 326 (SH105, SOUTH TO JEFFERSON COUNTY LINE)								
REMARKS:							MPO PROJ ID: A00187532	

**JJOHRTS FY 2025-2028 TRANSPORTATION IMPROVEMENT PROGRAM BEAUMONT DISTRICT
SETRPC METROPOLITAN PLANNING ORGANIZATION
GROUPED PROJECTS**

DISTRICT	COUNTY	CSJ	HWY	PHASE	CITY	LET YR	Project Sponsor	EST COST
Beaumont	Hardin	0602-01-049	SH 327			2026		\$647,954.00

LIMITS FROM: US 69, EAST

LIMITS TO: S. 19TH STREET

DESCRIPTION: 2026 Seal Coat-SH 327 (US 69, EAST TO S. 19TH STREET)

REMARKS:

MPO PROJ ID: A00187520

DISTRICT	COUNTY	CSJ	HWY	PHASE	CITY	LET YR	Project Sponsor	EST COST
Beaumont	Orange	0710-02-069	FM 105			2026		\$82,935.00

LIMITS FROM: JASPER COUNTY LINE, SOUTH

LIMITS TO: FM 2802

DESCRIPTION: 2026 Seal Coat-FM 105 (JASPER COUNTY LINE, SOUTH TO FM 2802)

REMARKS:

MPO PROJ ID: A00187480

DISTRICT	COUNTY	CSJ	HWY	PHASE	CITY	LET YR	Project Sponsor	EST COST
Beaumont	Orange	0710-02-070	FM 105			2026		\$229,265.00

LIMITS FROM: FM 1131, SOUTH

LIMITS TO: FM 1132

DESCRIPTION: 2026 Seal Coat-FM 105 (FM 1131, SOUTH TO FM 1132)

REMARKS:

MPO PROJ ID: A00196355

DISTRICT	COUNTY	CSJ	HWY	PHASE	CITY	LET YR	Project Sponsor	EST COST
Beaumont	Hardin	0784-01-052	FM 418			2026		\$216,576.00

LIMITS FROM: BU 96, EAST

LIMITS TO: FM 92

DESCRIPTION: 2026 Seal Coat-FM 418 (BU 96, EAST TO FM 92)

REMARKS:

MPO PROJ ID: A00187514

DISTRICT	COUNTY	CSJ	HWY	PHASE	CITY	LET YR	Project Sponsor	EST COST
Beaumont	Jefferson	0932-01-119	FM 365			2026		\$1,543,721.00

LIMITS FROM: 0.1 MILES EAST OF SH 124, EAST

LIMITS TO: 100' WEST OF SS 93(LEAVE OUT LEVEE GATE)

DESCRIPTION: 2026 Seal Coat-FM 365 (0.1 MILES EAST OF SH 124, EAST TO 100' WEST OF SS 93<LEAVE OUT SECTION AT DD7 LEVEE GATE)

REMARKS:

MPO PROJ ID: A00187508

**JJOHRTS FY 2025-2028 TRANSPORTATION IMPROVEMENT PROGRAM BEAUMONT DISTRICT
SETRPC METROPOLITAN PLANNING ORGANIZATION
GROUPED PROJECTS**

DISTRICT	COUNTY	CSJ	HWY	PHASE	CITY	LET YR	Project Sponsor	EST COST
Beaumont	Jefferson	3579-01-007	FM 3514			2026		\$210,796.00
LIMITS FROM:		50' EAST OF SS 93, EAST			LIMITS TO: 200' WEST OF US 69 FRONTAGE ROAD			
DESCRIPTION:		2026 Seal Coat-FM 3514 (50' EAST OF SS 93, EAST TO 200' WEST OF US 69 FRONTAGE ROAD)						
REMARKS:		MPO PROJ ID: A00187512						

DISTRICT	COUNTY	CSJ	HWY	PHASE	CITY	LET YR	Project Sponsor	EST COST
Beaumont	Hardin	0920-03-080	Various			2026		\$205,500.00
LIMITS FROM:		VILLAGE CREEK STATE PARK			LIMITS TO: .			
DESCRIPTION:		SEAL COAT PARK ROADS, PARKING LOTS AND CAMPSITE PULLOUTS						
REMARKS:		MPO PROJ ID: A00043255						

DISTRICT	COUNTY	CSJ	HWY	PHASE	CITY	LET YR	Project Sponsor	EST COST
Beaumont	Jefferson	0932-01-113	FM 365			2026		\$6,000,000.00
LIMITS FROM:		AT RHODAIR GULLY			LIMITS TO: STR#201240093201012			
DESCRIPTION:		BRIDGE REPLACEMENT						
REMARKS:		MPO PROJ ID: A00046341						

DISTRICT	COUNTY	CSJ	HWY	PHASE	CITY	LET YR	Project Sponsor	EST COST
Beaumont	Jasper	0243-05-011	FM 2938			2026		\$4,300,000.00
LIMITS FROM:		SH 62 N, SOUTH			LIMITS TO: SH 62 S			
DESCRIPTION:		FM 2938 (SH 62N, SOUTH-SH 62 S) Widen and Overlay						
REMARKS:		MPO PROJ ID: A00196632						

DISTRICT	COUNTY	CSJ	HWY	PHASE	CITY	LET YR	Project Sponsor	EST COST
Beaumont	Jefferson	0368-03-040	SH 124			2026		\$7,180,000.00
LIMITS FROM:		LABELLE ROAD, SOUTH			LIMITS TO: FM 365			
DESCRIPTION:		SH 124-(LABELLE RD, SOUTH TO FM 365) Full depth concrete repair / Full depth base repair / SP						
REMARKS:		MPO PROJ ID: A00187985						

**JJOHRTS FY 2025-2028 TRANSPORTATION IMPROVEMENT PROGRAM BEAUMONT DISTRICT
SETRPC METROPOLITAN PLANNING ORGANIZATION
GROUPED PROJECTS**

DISTRICT	COUNTY	CSJ	HWY	PHASE	CITY	LET YR	Project Sponsor	EST COST
Beaumont	Jefferson	0368-04-035	SH 124			2026		\$3,220,000.00
LIMITS FROM: WALDEN ROAD, SOUTH			LIMITS TO: LABELLE ROAD					
DESCRIPTION: SH 124-(WALDEN ROAD, SOUTH TO LABELLE ROAD) Full depth concrete repair / Full depth base repair / SP								
REMARKS:							MPO PROJ ID: A00187974	

DISTRICT	COUNTY	CSJ	HWY	PHASE	CITY	LET YR	Project Sponsor	EST COST
Beaumont	Jefferson	0920-00-133	Various			2026		\$10,769,232.00
LIMITS FROM: Districtwide			LIMITS TO: .					
DESCRIPTION: IH-10 Drainage Improvements								
REMARKS:							MPO PROJ ID: A00132173	

DISTRICT	COUNTY	CSJ	HWY	PHASE	CITY	LET YR	Project Sponsor	EST COST
Beaumont	Jefferson	0920-00-159	Various			2026		\$3,000,000.00
LIMITS FROM: DISTRICT WIDE			LIMITS TO: .					
DESCRIPTION: FY 26-DISTRICT WIDE-Address Bridge FUAs								
REMARKS:							MPO PROJ ID: A00196604	

DISTRICT	COUNTY	CSJ	HWY	PHASE	CITY	LET YR	Project Sponsor	EST COST
Beaumont	Jefferson	0920-00-163	Various			2026		\$2,000,000.00
LIMITS FROM: DISTRICT WIDE			LIMITS TO: .					
DESCRIPTION: FY 26-DISTRICT WIDE-Overhead Sign Replacement								
REMARKS:							MPO PROJ ID: A00196608	

DISTRICT	COUNTY	CSJ	HWY	PHASE	CITY	LET YR	Project Sponsor	EST COST
Beaumont	Jefferson	0920-00-167	Various			2026		\$3,000,000.00
LIMITS FROM: DISTRICT WIDE			LIMITS TO: .					
DESCRIPTION: FY 26-DISTRICT WIDE-PAVEMENT MARKINGS/Specified Location Safety Re-striping								
REMARKS:							MPO PROJ ID: A00196614	

**JJOHRTS FY 2025-2028 TRANSPORTATION IMPROVEMENT PROGRAM BEAUMONT DISTRICT
SETRPC METROPOLITAN PLANNING ORGANIZATION
GROUPED PROJECTS**

DISTRICT	COUNTY	CSJ	HWY	PHASE	CITY	LET YR	Project Sponsor	EST COST
Beaumont	Jasper	0065-02-058	US 96			2026		\$2,417,085.00

LIMITS FROM: 0.2 MI S FM 1005 **LIMITS TO:** 0.4MI S OF CR 441

DESCRIPTION: BMT_US0096_4 (2022 HSIP) INSTALL MEDIAN BARRIERS

REMARKS: **MPO PROJ ID:** A00192942

DISTRICT	COUNTY	CSJ	HWY	PHASE	CITY	LET YR	Project Sponsor	EST COST
Beaumont	Jasper	0947-03-032	FM 1004			2026		\$6,500,000.00

LIMITS FROM: 2.5 Mile South OF Nort JCT W/US96, South **LIMITS TO:** 4.57 Miles South

DESCRIPTION: FM 1004-(2.5 Miles South OF North JCT W/US 96, South to 4.57 Miles South) Widen Existing

REMARKS: **MPO PROJ ID:** A00129712

DISTRICT	COUNTY	CSJ	HWY	PHASE	CITY	LET YR	Project Sponsor	EST COST
Beaumont	Jefferson	0028-06-090	US 90			2026		\$2,959,261.00

LIMITS FROM: HOWARD ST., EAST **LIMITS TO:** FM 364

DESCRIPTION: BMT_US0090_6 (2021 HSIP) -CONSTRUCT SHOULDERS (1-4 FT.)

REMARKS: **MPO PROJ ID:** A00184063

DISTRICT	COUNTY	CSJ	HWY	PHASE	CITY	LET YR	Project Sponsor	EST COST
Beaumont	Jefferson	0028-06-091	US 90			2026		\$2,794,329.00

LIMITS FROM: 0.38 mi E of FM 365 **LIMITS TO:** 4.08 mi East (Eastbound)

DESCRIPTION: US 90 (0.38 mi E of FM 365 to 4.08 mi East)(Eastbound) Full depth conc repair / Full depth base repair / SC, 1" CAM, 1" TOM

REMARKS: **MPO PROJ ID:** A00187743

DISTRICT	COUNTY	CSJ	HWY	PHASE	CITY	LET YR	Project Sponsor	EST COST
Beaumont	Jefferson	0028-06-093	US 90			2026		\$147,953.00

LIMITS FROM: KEITH ROAD, EAST **LIMITS TO:** WOOTEN ROAD

DESCRIPTION: BMT_US0090_11 (2022 HSIP) CLOSE CROSSOVER

REMARKS: **MPO PROJ ID:** A00192938

**JJOHRTS FY 2025-2028 TRANSPORTATION IMPROVEMENT PROGRAM BEAUMONT DISTRICT
SETRPC METROPOLITAN PLANNING ORGANIZATION
GROUPED PROJECTS**

DISTRICT	COUNTY	CSJ	HWY	PHASE	CITY	LET YR	Project Sponsor	EST COST
Beaumont	Jefferson	0028-06-094	US 90			2026		\$277,353.00
LIMITS FROM:		0.1 MI W OF KEITH			LIMITS TO:		0.1 MI E OF KEITH	
DESCRIPTION: BMT_US0090_9 (2022 HSIP) INSTALL TRAFFIC SIGNAL, SAFETY LIGHTING AT INTERSECTION								
REMARKS:							MPO PROJ ID: A00192939	

DISTRICT	COUNTY	CSJ	HWY	PHASE	CITY	LET YR	Project Sponsor	EST COST
Beaumont	Jefferson	0028-06-095	US 90			2026		\$303,118.00
LIMITS FROM:		0.1 MI W OF WOOTEN			LIMITS TO:		0.1 MI E OF WOOTEN	
DESCRIPTION: BMT_US0090_10 (2022 HSIP) INSTALL TRAFFIC SIGNAL, SAFETY LIGHTING AT INTERSECTION								
REMARKS:							MPO PROJ ID: A00192941	

DISTRICT	COUNTY	CSJ	HWY	PHASE	CITY	LET YR	Project Sponsor	EST COST
Beaumont	Jefferson	0028-06-096	US 90			2026		\$17,200,000.00
LIMITS FROM:		LIBERTY COUNTY LINE, EAST			LIMITS TO:		FM 364	
DESCRIPTION: US 90WB (LIBERTY COUNTY LINE, EAST TO FM 364) Add Shldr, 3" Mill and OV with 1" TOM-F and 2" SP-C								
REMARKS:							MPO PROJ ID: A00196623	

DISTRICT	COUNTY	CSJ	HWY	PHASE	CITY	LET YR	Project Sponsor	EST COST
Beaumont	Orange	0243-03-071	SH 62			2026		\$697,894.00
LIMITS FROM:		0.23 MI N OF COHENOUR RD			LIMITS TO:		FREDERICK RD	
DESCRIPTION: SH 62-(0.23 MI N OF COHENOUR RD, SOUTH TO FREDERICK RD) Increase Superelevation								
REMARKS:							MPO PROJ ID: A00192960	

DISTRICT	COUNTY	CSJ	HWY	PHASE	CITY	LET YR	Project Sponsor	EST COST
Beaumont	Orange	0306-01-069	SH 87			2026		\$10,600,000.00
LIMITS FROM:		FM 105, SOUTH			LIMITS TO:		SH 62	
DESCRIPTION: SH 87-(FM 105, SOUTH TO SH 62) Full Depth Conc Repr/ DBR / Spall Repr / Cln seal joints/ TOM								
REMARKS:							MPO PROJ ID: A00187923	

**JJOHRTS FY 2025-2028 TRANSPORTATION IMPROVEMENT PROGRAM BEAUMONT DISTRICT
SETRPC METROPOLITAN PLANNING ORGANIZATION
GROUPED PROJECTS**

DISTRICT	COUNTY	CSJ	HWY	PHASE	CITY	LET YR	Project Sponsor	EST COST
Beaumont	Orange	0306-01-070	SH 73			2026		\$720,000.00
LIMITS FROM: 1000' SW OF SH 62, NORTH			LIMITS TO: SH 62					
DESCRIPTION: SH 73-(1000' SW OF SH 62, NORTH TO SH 62) Full Depth Conc Repr/ DBR / Spall Repr / Cln seal joints/ TOM								
REMARKS:							MPO PROJ ID: A00187924	

DISTRICT	COUNTY	CSJ	HWY	PHASE	CITY	LET YR	Project Sponsor	EST COST
Beaumont	Jasper	0784-03-020	FM 1131			2026		\$3,335,724.00
LIMITS FROM: AT FM 105 N, SOUTH			LIMITS TO: ORANGE COUNTY LINE					
DESCRIPTION: FM 1131-(FM 105 N, SOUTH TO ORANGE COUNTY LINE) Construct Paved Shoulders (1-4 ft)								
REMARKS:							MPO PROJ ID: A00197893	

DISTRICT	COUNTY	CSJ	HWY	PHASE	CITY	LET YR	Project Sponsor	EST COST
Beaumont	Orange	0883-02-093	FM 105			2026		\$317,441.00
LIMITS FROM: LANGHAM FOREST BLVD			LIMITS TO: HEARTHSIDE DR					
DESCRIPTION: FM 105-(LANGHAM FOREST BLVD TO HEATHSIDE DRIVE) INCREASE SUPERELEVATION								
REMARKS:							MPO PROJ ID: A00193003	

DISTRICT	COUNTY	CSJ	HWY	PHASE	CITY	LET YR	Project Sponsor	EST COST
Beaumont	Jasper	0920-12-050	CR 455			2026		\$416,000.00
LIMITS FROM: @ THICKETY CREEK			LIMITS TO: EXISTING (STR#201220AA0389001)					
DESCRIPTION: CR 456 @ THICKETY CREEK-BRIDGE REPLACE *TxC MAPPING ISSUE								
REMARKS:							MPO PROJ ID: A00190134	

DISTRICT	COUNTY	CSJ	HWY	PHASE	CITY	LET YR	Project Sponsor	EST COST
Beaumont	Jefferson	0932-02-059	FM 365			2026		\$1,129,370.00
LIMITS FROM: US0090			LIMITS TO: 1.105 MILES SOUTH OF US 90					
DESCRIPTION: BMT_FM0365_1 (2022 HSIP) CONSTRUCT PAVED SHOULDERS (1-4 FT)								
REMARKS:							MPO PROJ ID: A00193004	

**JJOHRTS FY 2025-2028 TRANSPORTATION IMPROVEMENT PROGRAM BEAUMONT DISTRICT
SETRPC METROPOLITAN PLANNING ORGANIZATION
GROUPED PROJECTS**

DISTRICT	COUNTY	CSJ	HWY	PHASE	CITY	LET YR	Project Sponsor	EST COST
Beaumont	Hardin	0200-09-086	US 69			2026		\$5,400,000.00
LIMITS FROM: TYLER COUNTY LINE, SOUTH			LIMITS TO: FM 1003					
DESCRIPTION: US 69-(TYLER COUNTY LINE, SOUTH TO FM 1003)(Note: From Village Creek Bridge to FM 1003 NBL only)Full depth base repair, and overlay								
REMARKS:							MPO PROJ ID: A00187934	

DISTRICT	COUNTY	CSJ	HWY	PHASE	CITY	LET YR	Project Sponsor	EST COST
Beaumont	Jasper	0947-03-034	FM 1004			2026		\$2,473,541.00
LIMITS FROM: 0.27 MI N OF CR 634			LIMITS TO: 2.27 MI N OF CR 634					
DESCRIPTION: BMT_FM1004_1(2022 HSIP) CONSTRUCT PAVED SHOULDERS (1-4 FT)								
REMARKS:							MPO PROJ ID: A00193012	

DISTRICT	COUNTY	CSJ	HWY	PHASE	CITY	LET YR	Project Sponsor	EST COST
Beaumont	Hardin	0065-05-159	US 96			2026		\$4,100,000.00
LIMITS FROM: 0.4 MI. N. OF SH 327, SOUTH			LIMITS TO: VILLAGE CREEK BRIDGE					
DESCRIPTION: US 96NB (0.4 MI. N. OF SH 327, SOUTH TO VILLAGE CREEK BRIDGE) Full depth repair, DG-HMA Ty D LU and Tom-C								
REMARKS:							MPO PROJ ID: A00196634	

DISTRICT	COUNTY	CSJ	HWY	PHASE	CITY	LET YR	Project Sponsor	EST COST
Beaumont	Jefferson	0920-00-169	Various			2026		\$2,300,000.00
LIMITS FROM: DISTRICT WIDE			LIMITS TO: .					
DESCRIPTION: FY 26-DISTRICT WIDE-INSTALL RUMBLE STRIPS								
REMARKS:							MPO PROJ ID: A00197899	

DISTRICT	COUNTY	CSJ	HWY	PHASE	CITY	LET YR	Project Sponsor	EST COST
Beaumont	Jefferson	0920-00-172	Various			2026		\$1,201,479.00
LIMITS FROM: DISTRICT WIDE			LIMITS TO: .					
DESCRIPTION: TRUCK PARKING (FY 26)								
REMARKS:							MPO PROJ ID: A00199365	

**JJOHRTS FY 2025-2028 TRANSPORTATION IMPROVEMENT PROGRAM BEAUMONT DISTRICT
SETRPC METROPOLITAN PLANNING ORGANIZATION
GROUPED PROJECTS**

DISTRICT	COUNTY	CSJ	HWY	PHASE	CITY	LET YR	Project Sponsor	EST COST
Beaumont	Orange	0028-11-211	IH 10			2027		\$30,613.00
LIMITS FROM:		1.5 MILES WEST OF FM 1132, EAST			LIMITS TO: FM 1132 (EB ONLY)			
DESCRIPTION:		2027 Seal Coat-IH 10FR (1.5 MILES WEST OF FM 1132, EAST TO FM 1132) EB ONLY						
REMARKS:		MPO PROJ ID: A00196411						

DISTRICT	COUNTY	CSJ	HWY	PHASE	CITY	LET YR	Project Sponsor	EST COST
Beaumont	Jasper	0213-08-098	US 190			2027		\$462,769.00
LIMITS FROM:		2.5 MILES WEST OF SH 63 (WEST), EAST			LIMITS TO: SH 63			
DESCRIPTION:		2027 Seal Coat-US 190 (2.5 MILES WEST OF SH 63 (WEST), EAST TO SH 63)						
REMARKS:		MPO PROJ ID: A00196432						

DISTRICT	COUNTY	CSJ	HWY	PHASE	CITY	LET YR	Project Sponsor	EST COST
Beaumont	Jefferson	0307-01-157	SH 87			2027		\$45,407.00
LIMITS FROM:		TERMINAL ROAD, SOUTH			LIMITS TO: SH 82			
DESCRIPTION:		2027 Seal Coat-SH 87 (TERMINAL RD, SOUTH TO SH82)						
REMARKS:		MPO PROJ ID: A00196524						

DISTRICT	COUNTY	CSJ	HWY	PHASE	CITY	LET YR	Project Sponsor	EST COST
Beaumont	Hardin	0601-01-066	SH 326			2027		\$1,881,849.00
LIMITS FROM:		FM 770, SOUTH			LIMITS TO: BEGINNING OF CONCRETE PAVEMENT AT SH 105			
DESCRIPTION:		2027 Seal Coat-SH 326 (FM 770, SOUTH TO BEGINNING OF CONCRETE PAVEMENT AT SH 105)						
REMARKS:		MPO PROJ ID: A00196525						

DISTRICT	COUNTY	CSJ	HWY	PHASE	CITY	LET YR	Project Sponsor	EST COST
Beaumont	Jasper	0710-01-051	FM 105			2027		\$896,028.00
LIMITS FROM:		2.0 MILES SOUTH OF US 96, SOUTH			LIMITS TO: ORANGE COUNTY LINE			
DESCRIPTION:		2027 Seal Coat-FM 105 (2.0 MILES SOUTH OF US 96, SOUTH TO ORANGE COUNTY LINE)						
REMARKS:		MPO PROJ ID: A00196543						

**JJOHRTS FY 2025-2028 TRANSPORTATION IMPROVEMENT PROGRAM BEAUMONT DISTRICT
SETRPC METROPOLITAN PLANNING ORGANIZATION
GROUPED PROJECTS**

DISTRICT	COUNTY	CSJ	HWY	PHASE	CITY	LET YR	Project Sponsor	EST COST
Beaumont	Orange	0882-02-060	FM 1006			2027		\$283,173.00
LIMITS FROM: FM 2177, NORTH			LIMITS TO: 0.2 MILES SOUTH OF BU 90					
DESCRIPTION: 2027 Seal Coat-FM 1006(FM 2177, NORTH TO 0.2 MILES SOUTH OF BU 90)								
REMARKS:							MPO PROJ ID: A00196545	

DISTRICT	COUNTY	CSJ	HWY	PHASE	CITY	LET YR	Project Sponsor	EST COST
Beaumont	Jefferson	0932-01-122	FM 365			2027		\$766,227.00
LIMITS FROM: SP 93, EAST			LIMITS TO: BEGINNING OF CONCRETE PAVEMENT AT SH 347					
DESCRIPTION: 2027 Seal Coat-FM 365 (SP 93, EAST TO BEGINNING OF CONCRETE PAVEMENT AT SH 347)								
REMARKS:							MPO PROJ ID: A00196547	

DISTRICT	COUNTY	CSJ	HWY	PHASE	CITY	LET YR	Project Sponsor	EST COST
Beaumont	Orange	1284-01-084	FM 1130			2027		\$207,226.00
LIMITS FROM: SH 62 (OVERPASS), EAST			LIMITS TO: 2.7 MILES TO 2ND SET OF RR TRACKS					
DESCRIPTION: 2027 Seal Coat-FM 1130 (SH 62 (OVERPASS), EAST TO 2.7 MILES TO 2ND SET OF RR TRACKS)								
REMARKS:							MPO PROJ ID: A00196553	

DISTRICT	COUNTY	CSJ	HWY	PHASE	CITY	LET YR	Project Sponsor	EST COST
Beaumont	Hardin	1947-01-021	FM 1293			2027		\$1,137,660.00
LIMITS FROM: FM 787, EAST			LIMITS TO: FM 1003					
DESCRIPTION: 2027 Seal Coat-FM 1293 (FM 787, EAST TO FM 1003)								
REMARKS:							MPO PROJ ID: A00196555	

DISTRICT	COUNTY	CSJ	HWY	PHASE	CITY	LET YR	Project Sponsor	EST COST
Beaumont	Hardin	1947-02-017	FM 1293			2027		\$514,348.00
LIMITS FROM: FM 1003, EAST			LIMITS TO: SH 326					
DESCRIPTION: 2027 Seal Coat-FM 1293 (FM 1003, EAST TO SH 326)								
REMARKS:							MPO PROJ ID: A00196556	

**JJOHRTS FY 2025-2028 TRANSPORTATION IMPROVEMENT PROGRAM BEAUMONT DISTRICT
SETRPC METROPOLITAN PLANNING ORGANIZATION
GROUPED PROJECTS**

DISTRICT	COUNTY	CSJ	HWY	PHASE	CITY	LET YR	Project Sponsor	EST COST
Beaumont	Jefferson	0200-14-106	US 69			2027		\$13,000,000.00

LIMITS FROM: SH 124 , SOUTH

LIMITS TO: ERIE STREET

DESCRIPTION: US 69 SBFR (SH 124 , SOUTH TO ERIE STREET) 10" CRCP, BB, CSB, LTS

REMARKS:

MPO PROJ ID: A00196638

DISTRICT	COUNTY	CSJ	HWY	PHASE	CITY	LET YR	Project Sponsor	EST COST
Beaumont	Hardin	0601-01-067	SH 326			2027		\$2,500,000.00

LIMITS FROM: US 69, SOUTH

LIMITS TO: 0.10 MILES SOUTH OF FM 1293

DESCRIPTION: SH 326 (US 69, SOUTH TO 0.10 MILES SOUTH OF FM 1293) Conc Repair, DBR, Diamond Grind, Cln/Seal Joints, SC, TOM

REMARKS:

MPO PROJ ID: A00196640

DISTRICT	COUNTY	CSJ	HWY	PHASE	CITY	LET YR	Project Sponsor	EST COST
Beaumont	Jefferson	0920-00-160	Various			2027		\$3,000,000.00

LIMITS FROM: DISTRICT WIDE

LIMITS TO: .

DESCRIPTION: FY 27-DISTRICT WIDE-Address Bridge FUAs

REMARKS:

MPO PROJ ID: A00196605

DISTRICT	COUNTY	CSJ	HWY	PHASE	CITY	LET YR	Project Sponsor	EST COST
Beaumont	Jefferson	0920-00-164	Various			2027		\$2,000,000.00

LIMITS FROM: DISTRICT WIDE

LIMITS TO: .

DESCRIPTION: FY 27-DISTRICT WIDE-Overhead Sign Replacement

REMARKS:

MPO PROJ ID: A00196609

DISTRICT	COUNTY	CSJ	HWY	PHASE	CITY	LET YR	Project Sponsor	EST COST
Beaumont	Jefferson	0920-00-168	Various			2027		\$3,000,000.00

LIMITS FROM: DISTRICT WIDE

LIMITS TO: .

DESCRIPTION: FY 27-DISTRICT WIDE-PAVEMENT MARKINGS/Specified Location Safety Re-striping

REMARKS:

MPO PROJ ID: A00196615

**JJOHRTS FY 2025-2028 TRANSPORTATION IMPROVEMENT PROGRAM BEAUMONT DISTRICT
SETRPC METROPOLITAN PLANNING ORGANIZATION
GROUPED PROJECTS**

DISTRICT	COUNTY	CSJ	HWY	PHASE	CITY	LET YR	Project Sponsor	EST COST
Beaumont	Hardin	0065-06-068	US 69			2027		\$500,000.00
LIMITS FROM: US 96, SOUTH			LIMITS TO: PINE ISLAND BAYOU (FRONTAGE ROADS)					
DESCRIPTION: 1.5" MILL AND OVERLAY								
REMARKS:							MPO PROJ ID: A00064070	

DISTRICT	COUNTY	CSJ	HWY	PHASE	CITY	LET YR	Project Sponsor	EST COST
Beaumont	Jefferson	0920-00-173	Various			2027		\$1,114,014.00
LIMITS FROM: DISTRICT WIDE			LIMITS TO: .					
DESCRIPTION: TRUCK PARKING (FY 27)								
REMARKS:							MPO PROJ ID: A00199366	

DISTRICT	COUNTY	CSJ	HWY	PHASE	CITY	LET YR	Project Sponsor	EST COST
Beaumont	Jasper	0064-07-046	US 96			2027		\$47,945.00
LIMITS FROM: At FM 1007			LIMITS TO: .					
DESCRIPTION: BMT_US0096_1 (2023HSIP) Install Advanced Warning Signals & Signs (Intersection), Flashing or LED-embedded Stop Signs								
REMARKS:							MPO PROJ ID: A00206356	

DISTRICT	COUNTY	CSJ	HWY	PHASE	CITY	LET YR	Project Sponsor	EST COST
Beaumont	Jasper	0064-08-066	US 96			2027		\$242,046.00
LIMITS FROM: FM2800			LIMITS TO: .					
DESCRIPTION: BMT_US0096_2(2023 HSIP) Improve Traffic Signals								
REMARKS:							MPO PROJ ID: A00206427	

DISTRICT	COUNTY	CSJ	HWY	PHASE	CITY	LET YR	Project Sponsor	EST COST
Beaumont	Jefferson	0200-11-110	US 69			2027		\$507,942.00
LIMITS FROM: LNVA			LIMITS TO: IH0010					
DESCRIPTION: BMT_US0069_1(2023 HSIP) Wrong Way Driver Advanced Technologies								
REMARKS:							MPO PROJ ID: A00206436	

**JJOHRTS FY 2025-2028 TRANSPORTATION IMPROVEMENT PROGRAM BEAUMONT DISTRICT
SETRPC METROPOLITAN PLANNING ORGANIZATION
GROUPED PROJECTS**

DISTRICT	COUNTY	CSJ	HWY	PHASE	CITY	LET YR	Project Sponsor	EST COST
Beaumont	Orange	0305-07-074	SH 87			2027		\$305,907.00

LIMITS FROM: At FM3247 **LIMITS TO:** .

DESCRIPTION: BMT_SH0087_3(2023 HSIP) Improve Traffic Signals

REMARKS: **MPO PROJ ID:** A00206434

DISTRICT	COUNTY	CSJ	HWY	PHASE	CITY	LET YR	Project Sponsor	EST COST
Beaumont	Orange	0883-02-095	FM 105			2027		\$501,182.00

LIMITS FROM: 1.16 Mi W of FM1442 **LIMITS TO:** 0.88 Mi W of FM1442

DESCRIPTION: BMT_FM0105_1(2023 HSIP) Increase Superelevation

REMARKS: **MPO PROJ ID:** A00206438

DISTRICT	COUNTY	CSJ	HWY	PHASE	CITY	LET YR	Project Sponsor	EST COST
Beaumont	Orange	2562-01-026	FM 1442			2027		\$18,955.00

LIMITS FROM: At COLONIAL **LIMITS TO:** .

DESCRIPTION: BMT_FM1442_1(2023 HSIP) Install Advanced Warning Signals & Signs (Intersection), Flashing or LED-embedded Stop Signs

REMARKS: **MPO PROJ ID:** A00206361

DISTRICT	COUNTY	CSJ	HWY	PHASE	CITY	LET YR	Project Sponsor	EST COST
Beaumont	Hardin	0200-12-017	FM 418			2028		\$248,318.00

LIMITS FROM: US 69, EAST **LIMITS TO:** 2.07 MILES EAST

DESCRIPTION: 2028 Seal Coat-FM 418 (US 69, EAST TO 2.07 MILES EAST)

REMARKS: **MPO PROJ ID:** A00208028

DISTRICT	COUNTY	CSJ	HWY	PHASE	CITY	LET YR	Project Sponsor	EST COST
Beaumont	Jasper	0244-03-066	US 190			2028		\$1,186,228.00

LIMITS FROM: SH 63, EAST **LIMITS TO:** NEWTON COUNTY LINE

DESCRIPTION: 2028 Seal Coat-US 190 (SH 63, EAST TO NEWTON COUNTY LINE)

REMARKS: **MPO PROJ ID:** A00207862

**JJOHRTS FY 2025-2028 TRANSPORTATION IMPROVEMENT PROGRAM BEAUMONT DISTRICT
SETRPC METROPOLITAN PLANNING ORGANIZATION
GROUPED PROJECTS**

DISTRICT	COUNTY	CSJ	HWY	PHASE	CITY	LET YR	Project Sponsor	EST COST
Beaumont	Jefferson	0307-02-052	SH 87			2028		\$1,337,111.00

LIMITS FROM: FM 3322, SOUTH **LIMITS TO:** END OF MAINTENANCE

DESCRIPTION: 2028 Seal Coat-SH 87 (FM 3322, SOUTH TO END OF MAINTENANCE)

REMARKS: **MPO PROJ ID:** A00207883

DISTRICT	COUNTY	CSJ	HWY	PHASE	CITY	LET YR	Project Sponsor	EST COST
Beaumont	Hardin	0339-03-041	SH 105			2028		\$1,540,465.00

LIMITS FROM: FM 770, EAST **LIMITS TO:** 1.10 MI WEST OF SH 326

DESCRIPTION: 2028 Seal Coat-SH 105 (FM 770, EAST to 1.10 MI W OF SH 326)

REMARKS: **MPO PROJ ID:** A00207892

DISTRICT	COUNTY	CSJ	HWY	PHASE	CITY	LET YR	Project Sponsor	EST COST
Beaumont	Hardin	0339-04-041	SH 105			2028		\$69,490.00

LIMITS FROM: 1.10 MILES WEST OF SH 326, EAST **LIMITS TO:** 0.76 MILES WEST OF SH 326

DESCRIPTION: 2028 Seal Coat-SH 105 (1.10 MILES WEST OF SH 326, EAST to 0.76 MILES WEST OF SH 326)

REMARKS: **MPO PROJ ID:** A00208042

DISTRICT	COUNTY	CSJ	HWY	PHASE	CITY	LET YR	Project Sponsor	EST COST
Beaumont	Hardin	0784-01-053	FM 418			2028		\$995,308.00

LIMITS FROM: 2.07 MILES EAST OF US 69, EAST **LIMITS TO:** FM 92

DESCRIPTION: 2028 Seal Coat-FM 418 (2.07 MILES EAST OF US 69, EAST TO FM 92)

REMARKS: **MPO PROJ ID:** A00208029

DISTRICT	COUNTY	CSJ	HWY	PHASE	CITY	LET YR	Project Sponsor	EST COST
Beaumont	Jefferson	0920-00-137	Various			2028		\$500,000.00

LIMITS FROM: DISTRICTWIDE **LIMITS TO:** .

DESCRIPTION: FY 26 DISTRICTWIDE GUIDE SIGNS PLACEHOLDER

REMARKS: **MPO PROJ ID:** A00134324

**JJOHRTS FY 2025-2028 TRANSPORTATION IMPROVEMENT PROGRAM BEAUMONT DISTRICT
SETRPC METROPOLITAN PLANNING ORGANIZATION
GROUPED PROJECTS**

DISTRICT	COUNTY	CSJ	HWY	PHASE	CITY	LET YR	Project Sponsor	EST COST
Beaumont	Jefferson	0932-02-061	FM 365			2028		\$265,213.00
LIMITS FROM: PAGGI RD, SOUTH			LIMITS TO: FM 1406					
DESCRIPTION: 2028 Seal Coat-FM 365 (PAGGI RD, SOUTH TO FM 1406)								
REMARKS:							MPO PROJ ID: A00207849	

DISTRICT	COUNTY	CSJ	HWY	PHASE	CITY	LET YR	Project Sponsor	EST COST
Beaumont	Orange	1285-01-020	FM 1136			2028		#REF!
LIMITS FROM: SH 12, SOUTH			LIMITS TO: IH 10					
DESCRIPTION: 2028 Seal Coat-FM 1136 (SH 12, SOUTH TO IH 10)								
REMARKS:							MPO PROJ ID: A00207881	

DISTRICT	COUNTY	CSJ	HWY	PHASE	CITY	LET YR	Project Sponsor	EST COST
Beaumont	Orange	0028-14-121	IH 10			2028		\$1,000,000.00
LIMITS FROM: FM 3247, EAST			LIMITS TO: SH 87					
DESCRIPTION: IH 10FR EB&WB (FM 3247, EAST TO SH 87) LEVEL UP								
REMARKS:							MPO PROJ ID: A00196703	

DISTRICT	COUNTY	CSJ	HWY	PHASE	CITY	LET YR	Project Sponsor	EST COST
Beaumont	Jasper	0244-09-014	FM 2799			2028		\$1,192,103.00
LIMITS FROM: FM 777, EAST			LIMITS TO: US 96					
DESCRIPTION: FM 2799(FM 777, EAST TO US 96) Mill and Overlay with Safety Upgrades								
REMARKS:							MPO PROJ ID: A00196657	

DISTRICT	COUNTY	CSJ	HWY	PHASE	CITY	LET YR	Project Sponsor	EST COST
Beaumont	Jasper	0785-02-016	FM 1013			2028		\$1,956,159.00
LIMITS FROM: FM 82, EAST			LIMITS TO: NEWTON C/L					
DESCRIPTION: FM 1013-(FM 82, EAST TO NEWTON C/L) Widen, OCST and Overlay								
REMARKS:							MPO PROJ ID: A00183550	

**JJOHRTS FY 2025-2028 TRANSPORTATION IMPROVEMENT PROGRAM BEAUMONT DISTRICT
SETRPC METROPOLITAN PLANNING ORGANIZATION
GROUPED PROJECTS**

DISTRICT	COUNTY	CSJ	HWY	PHASE	CITY	LET YR	Project Sponsor	EST COST
Beaumont	Jefferson	0920-00-150	Various			2028		\$1,529,168.00

LIMITS FROM: DISTRICT WIDE

LIMITS TO: .

DESCRIPTION: DISTRICT WIDE-ITS UPGRADE to install 40 CCTV Cameras and 8 DMSs

REMARKS:

MPO PROJ ID: A00183763

DISTRICT	COUNTY	CSJ	HWY	PHASE	CITY	LET YR	Project Sponsor	EST COST
Beaumont	Jefferson	0920-00-139	Various			2028		#REF!

LIMITS FROM: DISTRICTWIDE

LIMITS TO: .

DESCRIPTION: FY 2024 DISTRICTWIDE PAVEMENT MARKINGS PLACEHOLDER

REMARKS:

MPO PROJ ID: A00134327

DISTRICT	COUNTY	CSJ	HWY	PHASE	CITY	LET YR	Project Sponsor	EST COST
Beaumont	Jefferson	0028-13-142	IH 10			2028		\$66,964,286.00

LIMITS FROM: US 90, EAST

LIMITS TO: AT UPRR

DESCRIPTION: IH 10-UPRR OVERPASS-REPLACE BRIDGE AND APPROACHES

REMARKS:

MPO PROJ ID: A00190602

DISTRICT	COUNTY	CSJ	HWY	PHASE	CITY	LET YR	Project Sponsor	EST COST
Beaumont	Jefferson	0920-00-138	Various			2028		\$470,000.00

LIMITS FROM: DISTRICTWIDE

LIMITS TO: .

DESCRIPTION: FY 24 DISTRICTWIDE GUIDE SIGNS PLACEHOLDER

REMARKS:

MPO PROJ ID: A00134325



Chapter 4: Federally Funded Transit Projects

DRRAFT

**TRANSIT PROJECT DESCRIPTION
JJOHRTS FY 2025-2028 TRANSPORTATION IMPROVEMENT PROGRAM**

<u>General Project Information</u>		<u>Funding Information (YOE)</u>	
Project Sponsor	Beaumont Municipal Transit	Federal Funding Category	NA
MPO Project Information (reference number, etc)	20014-TXXE	Federal (FTA) Funds	\$0.00
FTA Apportionment YR	2025	State Funds from TxDOT	\$1,027,500.00
Project Phase	Capital Assistance	Other Source	\$1,027,500.00
Description	Purchase three 35' CNG buses and four paratransit vehicles	Total Project Cost	\$2,055,000.00
SEC 5309 ID Number	TBD	Trans Dev Requested	\$0.00
Amendment Date & Action	NA	Trans Dev Credits Awarded (Date & Amount)	\$0.00

<u>General Project Information</u>		<u>Funding Information (YOE)</u>	
Project Sponsor	Beaumont Municipal Transit	Federal Funding Category	5307
MPO Project Information (reference number, etc)	22015-TXXE	Federal (FTA) Funds	\$2,000,000.00
FTA Apportionment YR	2025	State Funds from TxDOT	\$450,000.00
Project Phase	Operating Assistance	Other Source	\$0.00
Description	Operating assistance for FY 2025	Total Project Cost	\$4,450,000.00
SEC 5309 ID Number	TBD	Trans Dev Requested	\$0.00
Amendment Date & Action	NA	Trans Dev Credits Awarded (Date & Amount)	\$0.00

<u>General Project Information</u>		<u>Funding Information (YOE)</u>	
Project Sponsor	Port Arthur Transit	Federal Funding Category	5307
MPO Project Information (reference number, etc)	22022-TXXE	Federal (FTA) Funds	\$944,855.00
FTA Apportionment YR	2025	State Funds from TxDOT	\$319,560.00
Project Phase	Operating Assistance	Other Source	\$811,824.00
Description	Operating assistance for FY 2025	Total Project Cost	\$2,076,239.00
SEC 5309 ID Number	TBD	Trans Dev Requested	\$0.00
Amendment Date & Action	NA	Trans Dev Credits Awarded (Date & Amount)	\$0.00

**TRANSIT PROJECT DESCRIPTION
JJOHRTS FY 2025-2028 TRANSPORTATION IMPROVEMENT PROGRAM**

<u>General Project Information</u>		<u>Funding Information (YOE)</u>	
Project Sponsor	South East Texas Transit	Federal Funding Category	5310
MPO Project Information (reference number, etc)	22024-TXXE	Federal (FTA) Funds	\$182,821.00
FTA Apportionment YR	2025	State Funds from TxDOT	\$0.00
Project Phase	Operating Assistance	Other Source	\$45,705.00
Description	Operating assistance for FY 2025	Total Project Cost	\$228,526.00
SEC 5309 ID Number	TBD	Trans Dev Requested	\$0.00
Amendment Date & Action	NA	Trans Dev Credits Awarded (Date & Amount)	\$0.00

<u>General Project Information</u>		<u>Funding Information (YOE)</u>	
Project Sponsor	South East Texas Transit	Federal Funding Category	5311
MPO Project Information (reference number, etc)	22085-TXXE	Federal (FTA) Funds	\$502,153.00
FTA Apportionment YR	2025	State Funds from TxDOT	\$366,672.00
Project Phase	Administration Assistance	Other Source	\$260,812.00
Description	Administration and Operation of a Rural Transportation Program (2025)	Total Project Cost	\$1,129,637.00
SEC 5309 ID Number	TBD	Trans Dev Requested	\$0.00
Amendment Date & Action	NA	Trans Dev Credits Awarded (Date & Amount)	\$0.00

<u>General Project Information</u>		<u>Funding Information (YOE)</u>	
Project Sponsor	Beaumont Municipal Transit	Federal Funding Category	5339
MPO Project Information (reference number, etc)	20015-TXXE	Federal (FTA) Funds	\$304,965.00
FTA Apportionment YR	2025	State Funds from TxDOT	\$0.00
Project Phase	Capital Assistance	Other Source	\$0.00
Description	Purchase two-three paratransit vehicles	Total Project Cost	\$304,965.00
SEC 5309 ID Number	TBD	Trans Dev Requested	\$0.00
Amendment Date & Action	NA	Trans Dev Credits Awarded (Date & Amount)	\$0.00

**TRANSIT PROJECT DESCRIPTION
JJOHRTS FY 2025-2028 TRANSPORTATION IMPROVEMENT PROGRAM**

<u>General Project Information</u>		<u>Funding Information (YOE)</u>	
Project Sponsor	Beaumont Municipal Transit	Federal Funding Category	5339
MPO Project Information (reference number, etc)	20016-TXXE	Federal (FTA) Funds	\$621,266.00
FTA Apportionment YR	2025	State Funds from TxDOT	\$0.00
Project Phase	Capital Assistance	Other Source	\$0.00
Description	Purchase one 35' CNG bus	Total Project Cost	\$621,266.00
SEC 5309 ID Number	TBD	Trans Dev Requested	\$124,254.00
Amendment Date & Action	NA	Trans Dev Credits Awarded (Date & Amount)	\$0.00

<u>General Project Information</u>		<u>Funding Information (YOE)</u>	
Project Sponsor	Beaumont Municipal Transit	Federal Funding Category	5339
MPO Project Information (reference number, etc)	22016-TXXE	Federal (FTA) Funds	\$18,175,000.00
FTA Apportionment YR	2025	State Funds from TxDOT	\$0.00
Project Phase	Capital Assistance	Other Source	\$0.00
Description	Capital assistance for FY 2025	Total Project Cost	\$18,175,000.00
SEC 5309 ID Number	TBD	Trans Dev Requested	\$3,636,000.00
Amendment Date & Action	NA	Trans Dev Credits Awarded (Date & Amount)	\$0.00

<u>General Project Information</u>		<u>Funding Information (YOE)</u>	
Project Sponsor	Beaumont Municipal Transit	Federal Funding Category	5339
MPO Project Information (reference number, etc)	22017-TXXE	Federal (FTA) Funds	\$350,000.00
FTA Apportionment YR	2025	State Funds from TxDOT	\$0.00
Project Phase	Capital Assistance	Other Source	\$0.00
Description	Replacement vehicles - battery electric	Total Project Cost	\$350,000.00
SEC 5309 ID Number	TBD	Trans Dev Requested	\$70,000.00
Amendment Date & Action	NA	Trans Dev Credits Awarded (Date & Amount)	\$0.00

**TRANSIT PROJECT DESCRIPTION
JJOHRTS FY 2025-2028 TRANSPORTATION IMPROVEMENT PROGRAM**

<u>General Project Information</u>		<u>Funding Information (YOE)</u>	
Project Sponsor	Beaumont Municipal Transit	Federal Funding Category	5307
MPO Project Information (reference number, etc)	22018-TXXE	Federal (FTA) Funds	\$2,000,000.00
FTA Apportionment YR	2026	State Funds from TxDOT	\$450,000.00
Project Phase	Operating Assistance	Other Source	\$0.00
Description	Operating assistance for FY 2026	Total Project Cost	\$4,450,000.00
SEC 5309 ID Number	TBD	Trans Dev Requested	\$0.00
Amendment Date & Action	NA	Trans Dev Credits Awarded (Date & Amount)	\$0.00

<u>General Project Information</u>		<u>Funding Information (YOE)</u>	
Project Sponsor	Beaumont Municipal Transit	Federal Funding Category	5307
MPO Project Information (reference number, etc)	22021-TXXE	Federal (FTA) Funds	\$80,000.00
FTA Apportionment YR	2026	State Funds from TxDOT	\$0.00
Project Phase	Planning Assistance	Other Source	\$0.00
Description	Short Range Transit Plan	Total Project Cost	\$100,000.00
SEC 5309 ID Number	TBD	Trans Dev Requested	\$0.00
Amendment Date & Action	NA	Trans Dev Credits Awarded (Date & Amount)	\$0.00

<u>General Project Information</u>		<u>Funding Information (YOE)</u>	
Project Sponsor	Port Arthur Transit	Federal Funding Category	5307
MPO Project Information (reference number, etc)	22023-TXXE	Federal (FTA) Funds	\$944,855.00
FTA Apportionment YR	2026	State Funds from TxDOT	\$319,560.00
Project Phase	Operating Assistance	Other Source	\$811,824.00
Description	Operating assistance for FY 2026	Total Project Cost	\$2,076,239.00
SEC 5309 ID Number	TBD	Trans Dev Requested	\$0.00
Amendment Date & Action	NA	Trans Dev Credits Awarded (Date & Amount)	\$0.00

**TRANSIT PROJECT DESCRIPTION
JJOHRTS FY 2025-2028 TRANSPORTATION IMPROVEMENT PROGRAM**

<u>General Project Information</u>		<u>Funding Information (YOE)</u>	
Project Sponsor	South East Texas Transit	Federal Funding Category	5310
MPO Project Information (reference number, etc)	22025-TXXE	Federal (FTA) Funds	\$182,821.00
FTA Apportionment YR	2026	State Funds from TxDOT	\$0.00
Project Phase	Operating Assistance	Other Source	\$45,705.00
Description	Operating assistance for FY 2026	Total Project Cost	\$228,526.00
SEC 5309 ID Number	TBD	Trans Dev Requested	\$0.00
Amendment Date & Action	NA	Trans Dev Credits Awarded (Date & Amount)	\$0.00

<u>General Project Information</u>		<u>Funding Information (YOE)</u>	
Project Sponsor	South East Texas Transit	Federal Funding Category	5311
MPO Project Information (reference number, etc)	22086-TXXE	Federal (FTA) Funds	\$502,153.00
FTA Apportionment YR	2026	State Funds from TxDOT	\$366,672.00
Project Phase	Administration Assistance	Other Source	\$260,812.00
Description	Administration and Operation of a Rural Transportation Program (2026)	Total Project Cost	\$1,129,637.00
SEC 5309 ID Number	TBD	Trans Dev Requested	\$0.00
Amendment Date & Action	NA	Trans Dev Credits Awarded (Date & Amount)	\$0.00

<u>General Project Information</u>		<u>Funding Information (YOE)</u>	
Project Sponsor	Beaumont Municipal Transit	Federal Funding Category	5339
MPO Project Information (reference number, etc)	22019-TXXE	Federal (FTA) Funds	\$6,000,000.00
FTA Apportionment YR	2026	State Funds from TxDOT	\$0.00
Project Phase	Capital Assistance	Other Source	\$0.00
Description	Replacement vehicles - battery electric	Total Project Cost	\$6,000,000.00
SEC 5309 ID Number	TBD	Trans Dev Requested	\$1,200,000.00
Amendment Date & Action	NA	Trans Dev Credits Awarded (Date & Amount)	\$0.00

**TRANSIT PROJECT DESCRIPTION
JJOHRTS FY 2025-2028 TRANSPORTATION IMPROVEMENT PROGRAM**

<u>General Project Information</u>		<u>Funding Information (YOE)</u>	
Project Sponsor	Beaumont Municipal Transit	Federal Funding Category	5339
MPO Project Information (reference number, etc)	22020-TXXE	Federal (FTA) Funds	\$350,000.00
FTA Apportionment YR	2026	State Funds from TxDOT	\$0.00
Project Phase	Capital Assistance	Other Source	\$0.00
Description	Replacement vehicles - battery electric	Total Project Cost	\$350,000.00
SEC 5309 ID Number	TBD	Trans Dev Requested	\$70,000.00
Amendment Date & Action	NA	Trans Dev Credits Awarded (Date & Amount)	\$0.00

<u>General Project Information</u>		<u>Funding Information (YOE)</u>	
Project Sponsor	Beaumont Municipal Transit	Federal Funding Category	5307
MPO Project Information (reference number, etc)	24012-TXXE	Federal (FTA) Funds	\$2,000,000.00
FTA Apportionment YR	2027	State Funds from TxDOT	\$450,000.00
Project Phase	Operating Assistance	Other Source	\$0.00
Description	Operating assistance for FY 2026	Total Project Cost	\$4,450,000.00
SEC 5309 ID Number	TBD	Trans Dev Requested	\$0.00
Amendment Date & Action	NA	Trans Dev Credits Awarded (Date & Amount)	\$0.00

<u>General Project Information</u>		<u>Funding Information (YOE)</u>	
Project Sponsor	Port Arthur Transit	Federal Funding Category	5307
MPO Project Information (reference number, etc)	24013-TXXE	Federal (FTA) Funds	\$944,855.00
FTA Apportionment YR	2027	State Funds from TxDOT	\$319,560.00
Project Phase	Operating Assistance	Other Source	\$811,824.00
Description	Operating assistance for FY 2026	Total Project Cost	\$2,076,239.00
SEC 5309 ID Number	TBD	Trans Dev Requested	\$0.00
Amendment Date & Action	NA	Trans Dev Credits Awarded (Date & Amount)	\$0.00

**TRANSIT PROJECT DESCRIPTION
JJOHRTS FY 2025-2028 TRANSPORTATION IMPROVEMENT PROGRAM**

<u>General Project Information</u>		<u>Funding Information (YOE)</u>	
Project Sponsor	South East Texas Transit	Federal Funding Category	5310
MPO Project Information (reference number, etc)	24014-TXXE	Federal (FTA) Funds	\$182,821.00
FTA Apportionment YR	2027	State Funds from TxDOT	\$0.00
Project Phase	Operating Assistance	Other Source	\$45,705.00
Description	Operating assistance for FY 2026	Total Project Cost	\$228,526.00
SEC 5309 ID Number	TBD	Trans Dev Requested	\$0.00
Amendment Date & Action	NA	Trans Dev Credits Awarded (Date & Amount)	\$0.00

<u>General Project Information</u>		<u>Funding Information (YOE)</u>	
Project Sponsor	South East Texas Transit	Federal Funding Category	5311
MPO Project Information (reference number, etc)	24015-TXXE	Federal (FTA) Funds	\$502,153.00
FTA Apportionment YR	2027	State Funds from TxDOT	\$366,672.00
Project Phase	Administration Assistance	Other Source	\$260,812.00
Description	Administration and Operation of a Rural Transportation Program (2026)	Total Project Cost	\$1,129,637.00
SEC 5309 ID Number	TBD	Trans Dev Requested	\$0.00
Amendment Date & Action	NA	Trans Dev Credits Awarded (Date & Amount)	\$0.00

<u>General Project Information</u>		<u>Funding Information (YOE)</u>	
Project Sponsor	Beaumont Municipal Transit	Federal Funding Category	5307
MPO Project Information (reference number, etc)	24016-TXXE	Federal (FTA) Funds	\$2,000,000.00
FTA Apportionment YR	2028	State Funds from TxDOT	\$450,000.00
Project Phase	Operating Assistance	Other Source	\$0.00
Description	Operating assistance for FY 2026	Total Project Cost	\$4,450,000.00
SEC 5309 ID Number	TBD	Trans Dev Requested	\$0.00
Amendment Date & Action	NA	Trans Dev Credits Awarded (Date & Amount)	\$0.00

**TRANSIT PROJECT DESCRIPTION
JJOHRTS FY 2025-2028 TRANSPORTATION IMPROVEMENT PROGRAM**

<u>General Project Information</u>		<u>Funding Information (YOE)</u>	
Project Sponsor	Port Arthur Transit	Federal Funding Category	5307
MPO Project Information (reference number, etc)	24017-TXXE	Federal (FTA) Funds	\$944,855.00
FTA Apportionment YR	2028	State Funds from TxDOT	\$319,560.00
Project Phase	Operating Assistance	Other Source	\$811,824.00
Description	Operating assistance for FY 2026	Total Project Cost	\$2,076,239.00
SEC 5309 ID Number	TBD	Trans Dev Requested	\$0.00
Amendment Date & Action	NA	Trans Dev Credits Awarded (Date & Amount)	\$0.00

<u>General Project Information</u>		<u>Funding Information (YOE)</u>	
Project Sponsor	South East Texas Transit	Federal Funding Category	5310
MPO Project Information (reference number, etc)	24018-TXXE	Federal (FTA) Funds	\$182,821.00
FTA Apportionment YR	2028	State Funds from TxDOT	\$0.00
Project Phase	Operating Assistance	Other Source	\$45,705.00
Description	Operating assistance for FY 2026	Total Project Cost	\$228,526.00
SEC 5309 ID Number	TBD	Trans Dev Requested	\$0.00
Amendment Date & Action	NA	Trans Dev Credits Awarded (Date & Amount)	\$0.00

<u>General Project Information</u>		<u>Funding Information (YOE)</u>	
Project Sponsor	South East Texas Transit	Federal Funding Category	5311
MPO Project Information (reference number, etc)	24019-TXXE	Federal (FTA) Funds	\$502,153.00
FTA Apportionment YR	2028	State Funds from TxDOT	\$366,672.00
Project Phase	Administration Assistance	Other Source	\$260,812.00
Description	Administration and Operation of a Rural Transportation Program (2026)	Total Project Cost	\$1,129,637.00
SEC 5309 ID Number	TBD	Trans Dev Requested	\$0.00
Amendment Date & Action	NA	Trans Dev Credits Awarded (Date & Amount)	\$0.00



Chapter 5: Financial Summary

DRAFT



South East Texas Regional Planning Commission - Metropolitan Planning Organization
JOHRTS FY 2025 - 2028 Transportation Improvement Program

Funding by Category

Funding Category	Description	FY 2025		FY 2026		FY 2027		FY 2028		FY 2025 – FY 2028	
		Programmed	Authorized	Programmed	Authorized	Programmed	Authorized	Programmed	Authorized	Programmed	Authorized
1	Preventive Maintenance and Rehabilitation	\$2	\$2	\$1	\$1	\$5	\$5	\$0	\$0	\$8	\$8
2Mor2U	Urban Area (Non-TMA) Corridor Projects	\$12,609,998.00	\$12,609,998.00	\$0	\$0	\$0	\$95,030,000.00	\$0	\$0	\$107,639,998.00	\$107,639,998.00
3	Non-Traditionally Funded Transportation Project	\$3,524,036.50	\$3,524,036.50	\$0	\$0	\$0	\$0	\$0	\$0	\$3,524,036.50	\$3,524,036.50
30B	Design Build (DB)	\$0	\$0	\$0	\$0	\$0	\$0	\$0	\$0	\$0	\$0
4	Urban and Regional Connectivity	\$27,710,000.00	\$27,710,000.00	\$0	\$0	\$99,186,000.00	\$99,186,000.00	\$0	\$0	\$126,896,000.00	\$126,896,000.00
5	CMAQ	\$0	\$0	\$0	\$0	\$0	\$0	\$0	\$0	\$0	\$0
6	Structures - Bridge	\$0	\$0	\$0	\$0	\$0	\$0	\$0	\$0	\$0	\$0
7	Metro Mobility & Rehab	\$0	\$0	\$0	\$0	\$0	\$0	\$0	\$0	\$0	\$0
8	Safety	\$0	\$0	\$0	\$0	\$0	\$0	\$0	\$0	\$0	\$0
9	TAP Set-Aside Program	\$0	\$0	\$0	\$0	\$0	\$0	\$0	\$0	\$0	\$0
10	Supplemental Transportation	\$1,376,000.00	\$1,376,000.00	\$1,297,597.00	\$1,297,597.00	\$4,089,696.00	\$4,089,696.00	\$0	\$0	\$6,763,293.00	\$6,763,293.00
IOCBI	Corridor Border	\$0	\$0	\$0	\$0	\$0	\$0	\$0	\$0	\$0	\$0
11	District Discretionary	\$0	\$0	\$0	\$0	\$0	\$0	\$0	\$0	\$0	\$0
11	Energy Sector	\$0	\$0	\$0	\$0	\$0	\$0	\$0	\$0	\$0	\$0
12	Texas Clear Lanes	\$0	\$0	\$0	\$0	\$0	\$0	\$0	\$0	\$0	\$0
12	Strategic Priority	\$1,380,000.00	\$1,380,000.00	\$11,200,000.00	\$11,200,000.00	\$66,584,000.00	\$66,584,000.00	\$0	\$0	\$79,164,000.00	\$79,164,000.00
DA	DA	\$0	\$0	\$0	\$0	\$0	\$0	\$106,068,432.00	\$106,068,432.00	\$106,068,432.00	\$106,068,432.00
SWPE	Statewide Budget PE	\$0	\$0	\$0	\$0	\$0	\$0	\$0	\$0	\$0	\$0
SW ROW	Statewide Budget ROW	\$0	\$0	\$0	\$0	\$0	\$0	\$0	\$0	\$0	\$0
Total		\$46,600,036.50	\$46,600,036.50	\$12,497,598.00	\$12,497,598.00	\$264,889,701.00	\$264,889,701.00	\$106,068,432.00	\$106,068,432.00	\$430,055,767.50	\$430,055,767.50

All Figures in Year of Expenditure (YOE) Dollars

Current as of 03/28/2024

Transit Program	FY 2025			FY 2026			FY 2027		
	Federal	State/Other	Total	Federal	State/Other	Total	Federal	State/Other	Total
1 Sec. 5307 - Urbanized Formula >200K	\$2,944,855	\$1,581,384	\$6,526,239	\$3,024,855	\$1,581,384	\$6,626,239	\$2,944,855	\$1,581,384	\$6,526,239
2 Sec. 5307 - Urbanized Formula <200K									
3 Sec. 5309 - Discretionary									
4 Sec. 5310 - Elderly & Individuals w/Disabilities	\$182,821	\$45,705	\$228,526	\$182,821	\$45,705	\$228,526	\$182,821	\$45,705	\$228,526
5 Sec. 5311 - Nonurbanized Formula	\$502,153	\$627,484	\$1,129,637	\$502,153	\$627,484	\$1,129,637	\$502,153	\$627,484	\$1,129,637
6 Sec. 5316 - JARC >200K									
7 Sec. 5316 - JARC <200K									
8 Sec. 5316 - JARC Nonurbanized									
9 Sec. 5317 - New Freedom >200K									
10 Sec. 5317 - New Freedom <200K									
11 Sec. 5317 - New Freedom Nonurbanized									
12 Sec. 5324 - Emergency Relief									
13 Sec. 5337 - State of Good Repair									
14 Sec. 5339 - Bus & Bus Facilities >200K	\$19,451,231		\$19,451,231	\$6,350,000		\$6,350,000			
15 Other FTA		\$2,055,000	\$2,055,000						
16 Regionally Significant or Other									
Total Funds	\$23,081,060	\$4,309,573	\$29,390,633	\$10,059,829	\$2,254,573	\$14,334,402	\$3,629,829	\$2,254,573	\$7,884,402
Transportation Development Credits									
Requested			\$3,830,254.00			\$1,270,000.00			\$0
Awarded			\$0			\$0			\$0

All Figures in Year of Expenditure (YOE) Dollars

Transit Programs	FY 2028			FY 2025 - FY 2028		
	Federal	State/Other	Total	Federal	State/Other	Total
1 Sec. 5307 - Urbanized Formula >200K	\$2,944,855	\$1,581,384	\$6,526,239	\$11,859,420	\$6,325,536	\$26,204,956
2 Sec. 5307 - Urbanized Formula <200K				\$731,284	\$182,820	\$914,104
3 Sec. 5309 - Discretionary						
4 Sec. 5310 - Elderly & Individuals w/Disabilities	\$182,821	\$45,705	\$228,526	\$731,284	\$182,820	\$914,104
5 Sec. 5311 - Nonurbanized Formula	\$502,153	\$627,484	\$1,129,637	\$2,008,612	\$2,509,936	\$4,518,548.00
6 Sec. 5316 - JARC >200K						
7 Sec. 5316 - JARC <200K						
8 Sec. 5316 - JARC Nonurbanized						
9 Sec. 5317 - New Freedom >200K						
10 Sec. 5317 - New Freedom <200K						
11 Sec. 5317 - New Freedom Nonurbanized						
12 Sec. 5324 - Emergency Relief						
13 Sec. 5337 - State of Good Repair						
14 Sec. 5339 - Bus & Bus Facilities >200K				\$25,801,231	\$0	\$25,801,231
15 Other FTA				\$0	\$2,055,000	\$2,055,000
16 Regionally Significant or Other						
Total Funds	\$3,629,829	\$2,254,573	\$7,884,402	40,400,547	11,073,292	\$59,493,839
Transportation Development Credits						
Requested			\$0			\$0
Awarded			\$0			\$0

Chapter 6: Funding Categories

6.0 Texas Department of Transportation (TxDOT) Funding Categories:

- 1 Preventive Maintenance and Rehabilitation: Rehabilitation and preventative maintenance of the existing state highway system, including the Interstate Highway System main lanes, frontage roads, structures, signs, pavement markings, striping, etc.
- 2 Metropolitan and Urban Corridor Projects: Mobility and added capacity projects along a corridor that improve transportation facilities in order to decrease travel time and level or duration of traffic congestion and increase the safe and efficient movement of people and freight in metropolitan and urbanized areas.
- 3 Non-Traditionally Funded Transportation Projects: Transportation related projects that qualify for funding from sources not traditionally part of the state highway fund, including state bond financing under programs such as proposition 12, pass-through toll financing, unique federal funding, regional toll revenue, and local participation funding.
- 4 Statewide Connectivity Corridor Projects: Mobility and added capacity projects on major state highway systems corridors which provide statewide connectivity between urban areas and corridors.
- 5 Congestion Mitigation and Air Quality Improvement: Addresses attainment of national ambient air quality standards in current non-attainment areas. Funds cannot be utilized to add capacity for single occupancy vehicles.
- 6 Structures-Replacement & Rehabilitation: Replaces or rehabilitates eligible bridges on and off the state highway system. Eliminates at-grade highway/railroad crossings by providing grade separations and rehabilitates/replaces deficient railroad underpasses.
- 7 Metropolitan Mobility & Rehabilitation: Addresses various transportation needs within Transportation Management Areas selected by the Metropolitan Planning Organizations.

- 8 Safety: Addresses safety related projects on and off the state highway system. Includes safety improvements to high-risk rural roads, projects selected via safety indices to eliminate hazards, and signal coordination and warning devices at railroad crossings.
- 9 Enhancements: Includes projects above and beyond typical transportation improvements, including on- and off-road pedestrian and bicycle pedestrian facilities, landscaping, historic preservation, environmental mitigation, and safety rest areas.
- 10 Miscellaneous (Supplemental Transportation Projects): Various projects including construction and rehabilitation of roadways within and adjacent to state parks and wildlife refuges; landscaping development projects; replacement of rough railroad crossing surfaces, maintenance of automatic railroad devices, and rehabilitation and/or improvement of railroad infrastructure; and construction or replacement of curb ramps at on-system intersections.
- 11 District Discretionary: Various projects on the state highway system selected at the district's discretion.
- 12 Strategic Priority: Commission-selected projects that promote economic opportunity, increase efficiency on military deployment routes, maintain the ability to respond to both man-made and natural emergencies, and address other various strategic needs.

6.1 Federal Transit Administration Funding Categories:

- FTA 5307 Urbanized Area Formula Grant Program: Program subsidizes the operating and/or capital cost of transit services. Eligible expenses include planning, engineering, most administration, preventive maintenance, fuel, parts, and operating costs.
- FTA 5309 Capital Investment Program: Divided into three categories: modernization of existing rail systems, new rail systems, and new and replacement buses and facilities. The bus category is the only one from which the JOHRTS region is eligible to receive funds. These funds are used to subsidize the purchase of buses, bus related equipment and paratransit vehicles, and for the construction of bus-related facilities.
- FTA 5310 Transportation for Elderly Persons and Persons with Disabilities: Capital expenses that support transportation to meet the special needs of older adults and persons with disabilities.
- FTA 5311 Rural Transit and Intercity Bus: Capital, planning, and operating expenses for public transit in non-urbanized areas with a population under 50,000 as designated by the Bureau of the Census.

- FTA 5324 Emergency Relief: Funding for protecting, repairing, and/or replacing equipment and facilities that may suffer or have suffered serious damage as a result of an emergency, including natural disasters such as floods, hurricanes, and tornadoes.
- FTA 5339 Buses and Bus Facilities: Provides funding to replace, rehabilitate, and purchase buses and related equipment and to construct bus-related facilities

DRAFT

Chapter 7: Environmental Studies

FY 2025-2028 TRANSPORTATION IMPROVEMENT PROGRAM
BEAUMONT DISTRICT
SETRPC METROPOLITAN PLANNING ORGANIZATION
ENVIRONMENTAL STUDIES

DISTRICT	COUNTY	CSJ	HWY	PHASE	MPO PROJECT NUMBER
Beaumont	Hardin	0200-10-060	US 69	ENV	24020-NEAP
LIMITS FROM: 0.75 MI S OF FM 1003		LIMITS TO: MITCHELL ROAD			
DESCRIPTION: US 69 WIDEN FROM 2 to 4 LANES DIVIDED					
REMARKS:					

DRAFT

Chapter 8: Exempt Project Criteria

This chapter provides information excerpted from 40 CFR Part 93: Transportation Conformity Rule regarding project and program types that are considered exempt from being submitted as part of a transportation conformity determination analysis. This chapter is explanatory only and not applicable while the MPO is classified as within transportation conformity. The following criteria describe the exemption status for these types of projects and programs.

§93.126 Exempt Projects

Notwithstanding the other requirements of this subpart, highway and transit projects of the types listed in Table 1 are exempt from the requirement that a conformity determination be made. Such projects may proceed toward implementation even in the absence of a conforming transportation plan and TIP. A particular action of the type listed in Table 1 is not exempt if the MPO in consultation with other agencies (see §93.105(c)(1)(iii)), the EPA, and the FHWA (in the case of a highway project) or the FTA (in case of a transit project) concur that it has potentially adverse emissions impacts for any reason. States and MPOs must ensure that exempt projects do not interfere with TCM implementation.

Table 1: Exempt Projects

SAFETY
➔ Railroad/highway crossing
➔ Hazard elimination program
➔ Safer non-Federal-aid system roads
➔ Shoulder improvements
➔ Increasing sight distance
➔ Safety improvement program
➔ Traffic control devices and operating assistance other than signalization projects
➔ Railroad/highway crossing warning devices
➔ Guardrails, median barriers, crash cushions
➔ Pavement resurfacing and/or rehabilitation
➔ Pavement marking demonstration
➔ Emergency relief (23 U.S.C.125)

- ➔ Fencing
- ➔ Skid treatments
- ➔ Safety roadside rest areas
- ➔ Adding medians
- ➔ Truck climbing lanes outside the urbanized area
- ➔ Lighting improvements
- ➔ Widening narrow pavements or reconstructing bridges (no additional travel lanes)
- ➔ Emergency truck pullovers

MASS TRANSIT

- ➔ Operating assistance to transit agencies
- ➔ Purchase of support vehicles
- ➔ Rehabilitation of transit vehicles¹
- ➔ Purchase of office, shop, and operating equipment for existing facilities
- ➔ Purchase of operating equipment for vehicles (e.g., radios, fireboxes, lifts, etc.)
- ➔ Construction or renovation of power, signal, and communications systems
- ➔ Construction of small passenger shelters and information kiosks
- ➔ Reconstruction or renovation of transit buildings and structures (e.g., rail or bus buildings, storage and maintenance facilities, stations, terminals, and ancillary structures)
- ➔ Rehabilitation or reconstruction of track structures, track, and tracked in existing rights-of-way
- ➔ Purchase of new buses and rail cars to replace existing vehicles or for minor expansions of the fleet¹
- ➔ Construction of new bus or rail storage/maintenance facilities categorically excluded in 23 CFR 771

AIR QUALITY

- ➔ Continuation of ride-sharing and vanpooling promotion activities at current levels
- ➔ Bicycle and pedestrian facilities

OTHER

- ➔ Specific activities which do not involve or lead directly to construction, such as:
 - Planning and technical studies
 - Grants for training and research programs
 - Planning activities conducted pursuant to titles 23 and 49 U.S.C.
 - Federal-aid systems revisions
- ➔ Engineering to assess social, economic, and environmental effects of the proposed action or alternatives to the action
- ➔ Noise attenuation
- ➔ Advance land acquisition (23 CFR 712 or 23 CFR 771)
- ➔ Acquisition of scenic easements
- ➔ Plantings, landscaping, etc.
- ➔ Sign removal

¹ In PM10 nonattainment or maintenance areas, such projects are exempt only if they are in compliance with control measures in the applicable implementation plan

- ➔ Directional and informational signs
- ➔ Transportation enhancement activities (except rehabilitation and operation of historic transportation buildings, structures, or facilities)
- ➔ Repair of damage caused by natural disasters, civil unrest, or terrorist acts except projects involving substantial functional, locational or capacity changes

§93.127 Projects Exempt from Regional Emissions Analysis

Notwithstanding the other requirements of this subpart, highway and transit projects of the types listed in Table 2 are exempt from regional emissions analysis requirements. The local effects of these projects with respect to CO or PM10 concentrations must be considered to determine if a hot-spot analysis is required prior to making a project-level conformity determination. Such projects may then proceed to the project development process even in the absence of a conforming transportation plan and TIP. A particular action of the type listed in Table 2 is not exempt if the MPO in consultation with other agencies (see §93.105(c)(1)(iii)), the EPA, and the FHWA (in the case of a highway project) or the FTA (in case of a transit project) concur that it has potential regional impacts for any reason.

Table 2: Projects Exempt from Regional Emissions Analysis

- Intersection channelization projects
- Intersection signalization projects at individual intersections
- Interchange reconfiguration projects
- Changes in vertical and horizontal alignments
- Truck size and weight inspection stations
- Bus terminals and transfer points

§93.128 Traffic Signal Synchronization Projects

Traffic signal synchronization projects may be approved, funded, and implemented without satisfying the requirements of this subpart. However, all subsequent regional emissions analyses required by §93.118 and §93.119 for all transportation plans, TIPs, or projects not from a conforming plan and TIP must include such regionally significant traffic signal synchronization projects.

Chapter 9: Integration of Performance Measures

9.0 Introduction

Initiated as part of the 2012 Moving Ahead for Progress in the 21st Century (MAP-21) and continued in the 2015 Fixing America's Surface Transportation (FAST) Act, State Departments of Transportation (DOTs) and Metropolitan Planning Organizations (MPOs) are required to move towards a performance-based planning process with an emphasis on project selection based on specific planning factors. In the JJOHRTS Metropolitan Transportation Plan (MTP) 2050 developed under FAST Act, the SETRPC-MPO focused on the following factors for selection of projects in its Fiscally Constrained Project List:

- ➔ Safety: Ability to reduce potential crashes based on the Safety Improvement Index (SII) reduction factors for specific improvements.
- ➔ Emergency Response: Identifies roadway improvements that enhance the provision of emergency services.
- ➔ Intermodal Benefits: Ability to improve the flow of intermodal transport along roadways in the most cost-effective and safety conscious manner.
- ➔ Mobility: Improvement in roadway Level-of-Service (LOS).

On May 27, 2016, the Federal Highway Administration (FHWA) and the Federal Transit Administration (FTA) issued the Statewide and Nonmetropolitan Transportation Planning; Metropolitan Transportation Planning Final Rule. This regulation implements the transportation planning and transportation performance management provisions of MAP-21 and the FAST Act.

Pursuant with The Planning Rule, the Texas Department of Transportation (TxDOT) and each Texas MPO, including the SETRPC-MPO, must publish a System Performance Report for applicable performance measures in their respective statewide and metropolitan transportation plans and programs. The System Performance Report presents the condition and performance of the transportation system with respect to required performance measures, documents performance targets and progress achieved in meeting the targets in comparison with previous reports. Per the Planning Rule, the System Performance Report for the SETRPC-MPO JJOHRTS FY 2025-2028 TIP is included for the required Safety (PM1), Bridge and Pavement Condition (PM2), Travel Time Reliability (PM3), and Transit Asset Management (TAM) performance measures and targets.

9.1 Roadway Performance Measures and Targets

The SETRPC-MPO coordinates with the Texas Department of Transportation (TxDOT) and the Federal Highway Administration (FHWA) to establish and adopt performance measures and targets for the following performance areas: safety (PM1), pavement and bridge condition (PM2), and system performance (PM3).

9.1.1 Safety (PM1)

TxDOT has adopted its Strategic Highway Safety Plan, a data-driven statewide-coordinated safety plan to help reduce fatalities and serious injuries on all public roads. TxDOT established safety performance measures in the Highway Safety Improvement Program (HSIP) 2024 annual report dated August 31, 2023. These performance measures are:

- 3) Number of fatalities
- 4) Rate of fatalities per 100 million vehicle miles traveled (VMT)
- 5) Number of serious injuries
- 6) Rate of serious injuries per 100 million VMT
- 7) Number of combined non-motorized fatalities and non-motorized serious injuries

Safety performance targets are provided annually by the States to FHWA for each safety performance measure. Current statewide safety targets address fiscal year 2024 and are based on an anticipated five-year rolling average (2020-2024). Texas statewide safety performance targets for 2024 are included in The SETRPC adopted the Texas statewide safety performance targets on February 29, 2024.

Table 8-1: TxDOT Established Safety Performance Targets for FY 2023

2024 Safety Targets	Number of Fatalities (FARS/CRIS/ARF DATA)	Rate of Fatalities (FARS/CRIS/ARF DATA)	Number of Serious Injuries (FARS/CRIS DATA)	Serious Injury Rate (CRIS DATA)	Total Number of Non-Motorized Fatalities and Serious Injuries (FARS/CRIS DATA)
2020	3,874	1.49	14,659	5.63	2,206
2021	4,486	1.70	19,434	7.35	2,628
2022	3,272	1.25	17,539	6.70	2,321
2023	3,159	1.20	17,819	6.77	2,340
2023	3,046	1.14	18,242	6.77	2,360
2024 Target as a 5-year Average	3,567	1.36	18,096	6.64	2,371

The SETRPC-MPO recognizes the importance of linking goals, objectives, and investment priorities to stated performance objectives, and that establishing this link is critical to the achievement of national transportation goals and statewide and regional performance targets. As such, the SETRPC JJOHRTS 2025-2028 TIP planning process directly reflects the goals, objectives, performance measures, and targets as they are available and described in other State and public transportation plans and processes, the Texas Strategic Highway Safety Plan (SHSP), the Texas Highway Safety Improvement Program (HSIP), the current statewide Texas Transportation Plan 2050 (TTP), and the SETRPC JJOHRTS Metropolitan Transportation Plan 2050 (MTP).

- ➔ The Texas Strategic Highway Safety Plan (SHSP) is intended to reduce the number of fatalities and serious injuries resulting from motor vehicle crashes on public roads in Texas. Existing highway safety plans are aligned and coordinated with the SHSP, including the Texas Highway Safety Improvement Program (HSIP), MPO and local agencies' safety plans. The SHSP guides TxDOT, Texas MPOs, and other safety partners in addressing safety and defines a framework for implementation activities to be carried out across Texas.
- ➔ The TxDOT Highway Safety Improvement Program (HSIP) annual report provides for a continuous and systematic process that identifies and reviews traffic safety issues around the state. The goal of the HSIP process is to reduce the number of crashes, injuries and fatalities through the implementation of strategies and countermeasures structured around seven emphasis areas.

- ➔ The statewide Texas Transportation Plan 2050 (TTP) summarizes transportation needs across the state and identifies future funding projections for projects across transportation modes over the 25-year plan horizon.
- ➔ To support progress towards approved highway safety targets, the SETRPC JJOHRTS MTP-2050 increases the safety of the transportation system for motorized and non-motorized users as required by the Planning Rule through programming projects to help achieve the safety targets.

To support progress towards approved highway safety targets, the SETRPC JJOHRTS 2025-2028 TIP includes investments for safety improvements. These funded safety projects are expected to contribute to the achievement of the safety performance targets.

9.1.2 Pavement and Bridge Condition (PM2)

The Pavement and Bridge Condition Rule (PM2) establishes performance requirements to assess conditions on the National Highway System (NHS) and outlines the process for State DOTs and MPOs to establish targets and report conditions. TxDOT adopted new pavement and bridge condition targets on February 9, 2023 which consist of the following six (6) performance measures for PM2:

- 1) Percentage of Interstate System pavement in good or better condition,
- 2) Percentage of Interstate System pavement in poor condition,
- 3) Percentage of Non-Interstate National Highway System pavement in good condition,
- 4) Percentage of Non-Interstate National Highway System pavement in poor condition,
- 5) Percentage of Bridge Deck on the National Highway System in good condition, and
- 6) Percentage of Bridge Deck on the National Highway System in poor condition.

MPOs have 180 days from the adoption of performance measure targets by a state department of transportation to adopt those measures for the MPO or adopt their own targets. The SETRPC-MPO adopted the performance measures established by TxDOT for PM2 on June 15, 2023. These performance targets are shown in Table 8-2.

Table 8-2: TxDOT Established (PM2) Pavement and Bridge performance Measure Targets

Performance Measure	Statewide Baseline	2 Year Target	4 Year Target
Pavement on Interstate System			
1) % in "Good" condition	64.5%	63.9%	63.6%
2) % in "Poor" condition	0.1%	0.2%	0.2%
Pavement on Non-Interstate			
3) % in "Good" condition	51.7%	45.5%	46.0%
4) % in "Poor" condition	1.3%	1.5%	1.5%
National Highway System Bridge Deck Condition			
5) % in "Good" condition	49.2%	48.5%	47.6%
6) % in "Poor" condition	1.1%	1.5%	1.5%

The SETRPC-MPO recognizes the importance of linking goals, objectives, and investment priorities to stated performance objectives, and that establishing this link is critical to the achievement of national transportation goals and statewide and regional performance targets. As such, the SETRPC JJOHRTS 2025-2028 TIP planning process directly reflects the goals, objectives, performance measures, and targets as they are available and described in other State and public transportation plans and processes; specifically, the current statewide Texas Transportation Plan 2050 (TTP) and the SETRPC JJOHRTS MTP-2050.

- ➔ The TTP 2050 summarizes transportation needs across the state and identifies future funding projections for projects across transportation modes over the 25-year plan horizon.
- ➔ The SETRPC JJOHRTS MTP-2050 addresses infrastructure preservation and identifies pavement and bridge infrastructure needs within the metropolitan planning area and allocates funding for targeted infrastructure improvements.

To support progress towards TxDOT’s statewide PM2 targets, the SETRPC JJOHRTS 2025-2028 TIP includes investments that will maintain pavement and bridge condition performance. Investments in pavement and bridge condition could include pavement replacement and reconstruction, bridge replacement and reconstruction, new bridge and pavement capacity, and system resiliency projects that improve NHS bridge components.

The fiscally constrained SETRPC JJOHRTS 2025-2028 TIP recommends investments for pavement and bridge condition through Category 1 Preventative Maintenance and Rehabilitation and Category 6 Bridges funds allocated to the TxDOT Beaumont District. These projects are expected to contribute toward achieving pavement and bridge condition performance targets.

9.1.3 System Performance (PM3)

The System Performance rule (PM3) establishes performance measure requirements to assess the performance of the National Highway System (NHS) and to assess freight movement on the Interstate System. These measures focus on evaluating travel time reliability and travel delays on interstate, freeway, and principal arterial class facilities to determine whether the magnitude of travel time variability is considered unreasonable. The objective of the rule is to ensure efforts to improve unreasonable travel delays and expedite the movement of people and goods, furthering the national goal of improving the efficiency of the surface transportation system.

Each MPO and state department of transportation must establish 2- and 4-year performance targets to assess the travel time reliability of all traffic on the National Highway System (NHS) and the travel reliability of national freight movement on the Interstate System. On February 9, 2023, the Texas Department of Transportation adopted revised travel time reliability targets for three performance measures. The MPO can either adopt a separate set of travel time reliability targets or support the targets approved by TxDOT. The SETRPC-MPO adopted the performance measures established by TxDOT for PM3 on June 15, 2023. These performance targets are shown in Table 8-3.

Table 8-3: System Performance (PM3) Measures and Targets

Performance Measure	Statewide Baseline	2 Year Target	4 Year Target
National Highway System Travel Time Reliability			
1) Percentage of the Person-Miles Traveled on the Interstate that are Reliable	84.6%	97%	95%
2) Percent of the Person-Miles Traveled on the Non-Interstate NHS that are Reliable	90.3%	70%	70%
3) Truck Travel Time Reliability (TTTR) Index	1.39	1.55	1.55

The SETRPC-MPO recognizes the importance of linking goals, objectives, and investment priorities to stated performance objectives, and that establishing this link is critical to the achievement of national transportation goals and statewide and regional performance targets. As such, the SETRPC JJOHRTS 2025-2028 TIP planning process directly reflects the goals, objectives, performance measures, and targets as they are available and described in other State and public transportation plans and processes; specifically, the Texas Freight Mobility Plan, the current statewide Texas Transportation Plan 2050 (TTP), and the SETRPC JJOHRTS MTP-2050.

- The Texas Freight Mobility Plan defines the conditions and performance of the state freight system and identifies the policies and investments that will enhance Texas highway freight mobility well into the future. The Plan identifies freight needs and the criteria Texas will use to determine investments in freight and prioritizes freight investments across modes.

- ➔ The TTP 2050 summarizes transportation needs across the state and identifies future funding projections for projects across transportation modes over the 25-year plan horizon.
- ➔ The JJOHRTS MTP-2050 addresses reliability, freight movement, and congestion within the metropolitan planning area and allocates funding for targeted improvements.

To support progress towards TxDOT’s statewide PM3 targets, the SETRPC JJOHRTS 2025-2028 TIP devotes resources to projects that will address passenger and highway freight reliability and delay. The fiscally constrained SETRPC JJOHRTS 2025-2028 TIP programs \$107,639,998 of investments for travel time reliability improvements through Category 2 Metropolitan and Urban Area Corridor Projects and Category 4 Statewide Connectivity Corridor Projects funds allocated to the TxDOT Beaumont District. The funded projects are expected to contribute toward achieving travel time reliability performance targets.

9.2 Public Transportation/Transit Performance Measures and Targets

The SETRPC-MPO coordinates with the Beaumont Municipal Transit (BMT), Port Arthur Transit (PAT), South East Texas Transit (SETT), and the Federal Transit Authority (FTA) to establish and adopt performance measures and targets for the following performance areas: transit asset management (TAM) and Public Transportation Agency Safety Plans (PTASP).

9.2.1 Transit Asset Management Performance Measures and Targets (TAM)

The Federal Transit Administration (FTA) Transit Asset Management (TAM) Final Rule requires public transit providers to establish and implement TAM plans. The TAM plans for tier II providers must include a transit asset inventory, condition assessment of the inventoried assets, documentation of the provider’s decision support tools/process, and a list of investment priorities to improve the state of good repair (SGR) of the provider’s capital assets. SGR is defined as the condition in which a capital asset is able to operate at a full level of performance. The premise of the rule is the condition of assets should guide funding prioritization. The rule also outlines the process for State departments of transportation, MPOs, and transit providers to establish and report their transit asset performance targets, and the process FTA will use to assess whether transit providers have met or made significant progress toward meeting their performance targets.

FTA requires public transit providers to review and update their TAM plans at least once every four years. In 2018, Beaumont Municipal Transit, Port Arthur Transit, and South East Texas Transit developed their own TAM plans in accordance with the TAM Final Rule. The TAM plans were updated in 2022, which account for each transit provider’s recent asset inventories, condition assessment, and expectations for asset procurement and improvements along with performance targets for fiscal years 2022 and 2023.

Beaumont Municipal Transit, Port Arthur Transit, and South East Texas Transit have approved the proposed updates to the transit asset performance targets for the federally required transit asset types. The MPO can either adopt a separate set of targets for the transit assets or support the targets approved by the transit agencies. The SETRPC-MPO adopted the performance measures established by Beaumont Municipal Transit, Port Arthur Transit, and South East Texas Transit for TAM on June 15, 2023. These performance targets are shown in Table 8-4.

Table 8-4: Transit Asset Management (TAM) Performance Measures and Targets

Asset Category	Asset Class	Asset Type	FY 22 Target for Exceeding Useful Life Benchmark* (%)	FY 23 Target for Exceeding Useful Life Benchmark (%)
Rolling Stock	Revenue Vehicle	Bus	20%	20%
		Cutaway Bus	10%	10%
		Van	10%	10%
Equipment	Non-Revenue Vehicle	Automobile	80%	80%
		Trucks and Other Rubber Tire Vehicles	40%	40%
Facility	Maintenance or Administrative Facility	Administrative Offices and Maintenance Shop/Yard	10%	10%
	Passenger or Parking Facility	Station/Transit Terminal	10%	10%

*Useful Life Benchmark (ULB): defined by FTA as the expected amount of time in years that a vehicle type is estimated to function, when acquired new and assuming routine maintenance is practiced.

** Based on the TERM scale, an asset is in a state of good repair if it has a rating of 3 or over on the TERM scale

*** FTA's Transit Economic Requirements Model (TERM). The TERM scale assigns numerical ratings from 1.0 (poor) to 5.0 (excellent) based on condition.

The SETRPC-MPO recognizes the importance of linking goals, objectives, and investment priorities to stated performance objectives, and that establishing this link is critical to the achievement of national transportation goals and statewide and regional performance targets. As such, the SETRPC JJOHRTS 2025-2028 TIP planning process directly reflects the goals, objectives, performance measures, and targets as they are available and described in other State and public transportation plans and processes, specifically, the current statewide Texas Transportation Plan (TTP) 2050 and SETRPC JJOHRTS MTP-2050.

- ➔ The TTP 2050 summarizes transportation needs across the state and identifies future funding projections for projects across transportation modes over the 25-year plan horizon.
- ➔ The SETRPC JJOHRTS MTP-2050 addresses and identifies transit needs within the metropolitan planning area and allocates funding for targeted improvements.

To support progress towards the TAM targets, the SETRPC MTP-2050 devotes resources to projects that will address transit asset management.

9.2.2 Public Transportation Agency Safety Plan (PTASP)

Under the Federal Transit Administration’s (FTA) Public Transportation Agency Safety Plan (PTASP) Rule, applicable transit agencies are required to develop safety plans that define how these agencies will implement Safety Management Systems (SMS). These transit plans are required to include targets for performance measures defined in the National Public Transportation Safety Plan, which relate to fatalities, injuries, safety events, and system reliability. MPOs are federally required to set performance targets for these transit safety performance measures for their regions, in coordination with transit and state agencies. These requirements acknowledge the collaborative relationships needed to manage safety risks on transit systems.

Beaumont Municipal Transit and Port Arthur Transit are the only transit agencies within the metropolitan area utilizing FTA’s Urbanized Area Formula Grants federal funds. Beaumont Municipal Transit and Port Arthur Transit have adopted transit safety performance targets for each performance measure. The SETRPC-MPO adopted the performance measures established by Beaumont Municipal Transit and Port Arthur Transit for PTASP on June 15, 2023. These performance targets are shown in Table 8-5

Table 8-5.

Table 8-5: Public Transportation Agency Safety Plan (PTASP) Performance Measures and Targets

Mode	Fatalities (Total)	Fatalities (Per 100,000 VRM*)	Injuries (Total)	Injuries (Per 100,000 VRM)	Safety Events (Total)	Safety Events (Per 100,000 VRM)	System Reliability (VRM between failures)
Fixed Route Bus	0	0	<3	<0.33	<2	<0.66	>10,000
Demand Response Bus	0	0	0	0	<2	<0.8	>50,000

The SETRPC-MPO recognizes the importance of linking goals, objectives, and investment priorities to stated performance objectives, and that establishing this link is critical to the achievement of

national transportation goals and statewide and regional performance targets. As such, the SETRPC JJOHRTS 2025-2028 TIP planning process directly reflects the goals, objectives, performance measures, and targets as they are available and described in other State and public transportation plans and processes, specifically, the current statewide Texas Transportation Plan (TTP) 2050 and the SETRPC JJOHRTS MTP-2050.

- ➔ The TTP 2050 summarizes transportation needs across the state and identifies future funding projections for projects across transportation modes over the 25-year plan horizon.
- ➔ The SETRPC JJOHRTS MTP-2050 addresses and identifies transit needs within the metropolitan planning area and allocates funding for targeted improvements.

To support progress towards the PTASP targets, the SETRPC MTP-2050 devotes resources to projects that will transit safety.

9.3 The JJOHRTS FY 2025 – FY 2028 Transportation Improvement Program

The SETRPC MPO staff have reviewed projects in the TIP for compliance with four performance measures as mandated by federal law. The three performance measures are safety (PM1), pavement and bridge condition (PM2), and system performance (PM3). The TIP and any amendments to the TIP were also reviewed to determine their relevance to the Transit Asset Management Plan developed for Beaumont Municipal Transit (BMT), Port Arthur Transit (PAT), and South East Texas Transit (SETT). In addition, the TIP and any amendments to the TIP were reviewed to determine their relevance to the Public Transportation Agency Safety Plans (PTASP) developed for BMT and PAT. Project Contribution to Performance Targets

Table 8-6 below shows the projects programmed within the fiscally constrained JJOHRTS 2025-2028 TIP and the performance targets that each project is anticipated to positively affect. By agreeing to support the TxDOT performance targets in the area of safety (PM1), pavement and bridge condition (PM2), and travel time reliability (PM3), the SETRPC-MPO has agreed to coordinate with TxDOT to program projects that will contribute to the accomplishment of those goals, measures, and targets.

Table 8-6: Project Contribution to Performance Targets

CSJ	MPO ID	Roadway	Limits From	Limits To	Project Name	Project Description	PM1	PM2	PM3	TAM
0028-13-142	24007-50N	IH 10	US 90, East	At UPRR	IH 10 - UPRR Overpass - Replace Bridge and Approaches	Bridge Replacement		X		
0064-07-044	24004-50N	US 96	Sabine Co/L, South	0.8 Miles North of RE 255	Widen from 2 to 4 Lanes Divided	Widen Non-Freeway			X	
0064-08-062	24005-50N	US 96	0.8 Miles North of RE 255, South	RE 255	Widen from 2 To 4 Lanes Divided	Widen Non-Freeway			X	
0065-06-067	19095-F45N	US 69	US 96, South	Jefferson C/L	Widen Freeway from 4 to 6 Lanes	Widen Freeway			X	
0065-07-065	19084-F45N	US 69	Hardin C/L, South	Tram Road	Widen Freeway from 4 to 6 Lanes	Widen Freeway			X	
0200-04-020	24003-50N	US 69	Angelina County Line	Tyler County Line	Reconstruct Existing 2 Lane Highway to 4 Lanes Divided	Widen Non-Freeway		X	X	
0200-10-060	24005-50N	US 69	0.75 Mi S of FM 1003	Mitchell Road	US 69 Corridor (Kountze to Lumberton)	Construct New Road			X	
0200-15-025	24006-50N	US 69	Nederland Ave, South	Jimmy Johnson Blvd.	US 69 (Nederland Ave to Jimmy Johnson) Ramp Reversal, Bridge Widening, and Intersection Improvements	Freeway Operational Improvements	X			
0200-15-XXX	24010-50N	US 69	SH 347	FM 365	Widening of US 69 (North Segment)	Widen from 4 lanes to 6 lanes			X	
0200-16-XXX	24008-50N	US 69	FM 365	SH 73	Widening of US 69 (South Segment)	Widen from 4 lanes to 6 lanes			X	
0339-03-XXX	24011-50N	SH 105	FM 770	SH 326	Construct Passing Lanes (Super 2	Construct Passing Lanes (Super 2 Standards)	X			

CSJ	MPO ID	Roadway	Limits From	Limits To	Project Name	Project Description	PM1	PM2	PM3	TAM
					Standards) Of SH 105					
TBD	24009-50N	9 th Avenue	36 th Street	Evergreen Drive	9 th Avenue Paving and Drainage Improvements	Paving and Drainage Improvements		X		
0200-14-060	24006-50N	US 69	IH 10, South	SH 347	US 69 Widening - IH-10 to SH 347	Widen Road - Add Lanes			X	
0339-04-036	18001-F40N	SH 105	.10 Miles East of SH 326	Pine Island Bayou	SH 105 (SH 326 to Pine Is. Bayou) - Widen	Widen Road - Add Lanes			X	
0920-38-288	24001-50N	Houston	Corner of Houston Ave and	4 th Street	Port of Port Arthur Truck Queuing Area and Laydown Yard Project - Construction of a truck queuing Area at the corner of Houston Avenue and 4 th Street - Rider 37	Intersection & Operational Imprv.	X			
0920-38-291	24002-50N	Austin	Corner of Rev. Dr. Ransom Howard Drive	And Austin Avenue	Port of Port Arthur - Construct a queuing area at the corner of Rev. Dr. Ransom Howard Drive and Austin Avenue	Intersection & Operational Imprv.	X			
0920-00-133	No MPO ID	Various	Districtwide	.	IH-10 Drainage Improvements	Safety Improvement Projects	X			
0920-00-149	No MPO ID	Various	District Wide	.	FY 24 Districtwide ADA Project	Pedestrian, Sidewalks & Curb Ramps	X			

CSJ	MPO ID	Roadway	Limits From	Limits To	Project Name	Project Description	PM1	PM2	PM3	TAM
0920-00-150	No MPO ID	Various	District Wide	.	Districtwide - ITS Upgrade to Install 40 CCTV Cameras and 8 DMSs	Traffic Control Devices	X			
0920-00-171	No MPO ID	Various	District Wide	.	Truck Parking (FY 25)	Transportation Non-Roadway	X			
0920-00-172	No MPO ID	Various	District Wide	.	Truck Parking (FY 26)	Transportation Non-Roadway	X			
0920-00-173	No MPO ID	Various	District Wide	.	Truck Parking (FY 27)	Transportation Non-Roadway	X			
Multiple	NA	NA	NA	NA	Transit Operations and Maintenance	Transit Operations and Maintenance				X

DRAFT

In addition, by agreeing to support regional transit agency performance targets in the areas of transit asset management (TAM) and Public Transportation Agency Safety Plans (PTASP), the SETRPC-MPO has agreed to coordinate with Beaumont Municipal Transit (BMT), Port Arthur Transit (PAT), and South East Texas Transit (SETT) to program projects that will contribute to the accomplishment of those goals, measures, and targets. See Table 8-7 below.

Table 8-7: Project Contribution to Transit Performance Targets

MPO ID	Project Sponsor	FY Year	Description	TAM	PTA SP
20014-TXXE	Beaumont Municipal Transit	2025	Purchase three 35' CNG buses and four paratransit vehicles	X	
22015-TXXE	Beaumont Municipal Transit	2025	Operating assistance for FY 2025	X	X
22022-TXXE	Port Arthur Transit	2025	Operating assistance for FY 2025	X	X
22024-TXXE	South East Texas Transit	2025	Operating assistance for FY 2025	X	X
22085-TXXE	South East Texas Transit	2025	Administration and Operation of a Rural Transportation Program (2025)	X	X
20015-TXXE	Beaumont Municipal Transit	2025	Purchase two-three paratransit vehicles	X	
20016-TXXE	Beaumont Municipal Transit	2025	Purchase one 35' CNG bus	X	
22016-TXXE	Beaumont Municipal Transit	2025	Capital assistance for FY 2025	X	
22017-TXXE	Beaumont Municipal Transit	2025	Replacement vehicles - battery electric	X	X
22018-TXXE	Beaumont Municipal Transit	2026	Operating assistance for FY 2026	X	X
22021-TXXE	Beaumont Municipal Transit	2026	Short Range Transit Plan	X	X
22023-TXXE	Port Arthur Transit	2026	Operating assistance for FY 2026	X	X
22025-TXXE	South East Texas Transit	2026	Operating assistance for FY 2026	X	X
22086-TXXE	South East Texas Transit	2026	Administration and Operation of a Rural Transportation Program (2026)	X	X
22019-TXXE	Beaumont Municipal Transit	2026	Replacement vehicles - battery electric	X	X
22020-TXXE	Beaumont Municipal Transit	2026	Replacement vehicles - battery electric	X	X

MPO ID	Project Sponsor	FY Year	Description	TAM	PTA SP
24012-TXXE	Beaumont Municipal Transit	2027	Operating assistance for FY 2026	X	X
24013-TXXE	Port Arthur Transit	2027	Operating assistance for FY 2026	X	X
24014-TXXE	South East Texas Transit	2027	Operating assistance for FY 2026	X	X
24015-TXXE	South East Texas Transit	2027	Administration and Operation of a Rural Transportation Program (2026)	X	X
24016-TXXE	Beaumont Municipal Transit	2028	Operating assistance for FY 2026	X	X
24017-TXXE	Port Arthur Transit	2028	Operating assistance for FY 2026	X	X
24018-TXXE	South East Texas Transit	2028	Operating assistance for FY 2026	X	X
24019-TXXE	South East Texas Transit	2028	Administration and Operation of a Rural Transportation Program (2026)	X	X



Chapter 10: Public Involvement Documentation

DRAFT



Chapter 11: Resolution

DRAFT



Chapter 12: MPO Self-Certification

DRAFT



Chapter 13: Revisions

DRAFT