

Title VI and Environmental Justice Program

South East Texas Regional Planning Commission
Metropolitan Planning Organization

Adopted by the Transportation Planning Committee on July 27, 2023

Prepared by WSP



Table of Contents

Chapter 1: Introduction..... 2

1.0 Introduction 2

1.1 Title VI..... 2

1.2 Environmental Justice 2

Chapter 2: Title VI and Environmental Justice Program 4

2.0 Policy Statement 4

2.1 Title VI and Environmental Justice Program Elements 4

2.1.1 Data Collection and Analysis 5

2.1.2 Public Participation..... 5

2.1.3 Transportation Planning Process 5

2.1.4 Measures of Effectiveness 7

2.1.5 Contractors 7

2.1.6 Training Program 7

2.1.7 Complaint Procedures 8

Chapter 3: Environmental Justice Analysis 9

3.0 Definitions for the Protected Population 9

3.1 Threshold Analysis 10

3.2 Concentrations of Disadvantage 15

Chapter 1: Introduction

1.0 Introduction

This Title VI and Environmental Justice Program has been prepared to address the responsibilities of the South East Texas Regional Planning Commission - Metropolitan Planning Organization (SETRPC-MPO) as a recipient of federal financial assistance as they relate to the requirements of Title VI of the Civil Rights Act of 1964, the Age Discrimination Act of 1975, the Civil Rights Restoration Act of 1987, and Executive Order 12898. These federal laws and orders seek to prevent any form of discrimination and to ensure certain populations are not disproportionately adversely affected by plans, programs, and projects implemented by public agencies.

1.1 Title VI

Title VI of the Civil Rights Act of 1964 first prohibited discrimination on the basis of race, color, or national origin in programs or activities receiving federal financial assistance. Furthermore, the Civil Rights Restoration Act of 1987 clarified the intent of Title VI to include all programs and activities of Federal-aid recipients, sub-recipients and contractors, whether those programs and activities are federally funded or not. The Age Discrimination Act of 1975 clarified that age is a protected group under Title VI.

1.2 Environmental Justice

Presidential Executive Order 12898, entitled Federal Actions to Address Environmental Justice in Minority Populations and Low-Income Populations, promulgated on February 11, 1994, expanded the scope of previous guidance to include identifying and avoiding “disproportionately high and adverse” effects on minority and low-income populations. The United States Department of Transportation (USDOT) Order 6640.23 requires the Federal Highway Administration (FHWA) and the Federal Transit Administration (FTA) to implement the principles of Environmental Justice in all programs, policies, and activities.

The three principles of Environmental Justice are:

- ➔ To avoid, minimize, or mitigate disproportionately high and adverse human health or environmental effects, including social and economic effects, on minority populations and low-income populations.
- ➔ To ensure the full and fair participation by all potentially affected communities in the transportation decision-making process.

- ➔ To prevent the denial of, reduction in, or significant delay in the receipt of benefits by minority populations and low-income populations.

Environmental Justice must be considered in all phases of planning and focuses on enhanced public involvement and an analysis of the distribution of benefits and impacts. Environmental Justice issues arise most frequently when certain communities:

- ➔ Receive the benefits of improved accessibility, faster trips, and congestion relief, while others experience fewer benefits.
- ➔ Suffer disproportionately from transportation programs' negative impacts, like air pollution.
- ➔ Pay higher transportation taxes or higher fares than others in relation to the services received.
- ➔ Experience underrepresentation when policymaking bodies debate and decide allocations of transportation resources.

While Environmental Justice concerns are more frequently raised during project development, Title VI applies equally to the plans, programs, and activities of all planning activities in which the SETRPC-MPO is actively involved.

1.3 Program Summary

To address these federal requirements, the SETRPC-MPO has developed this Title VI/Environmental Justice Program. Specifically, this Title VI and Environmental Justice Program:

- ➔ Identifies the SETRPC-MPO's formal Policy Statement regarding Title VI and Environmental Justice.
- ➔ Describes the general elements of the SETRPC-MPO's Title VI/Environmental Justice Program.
- ➔ Includes a Title VI Complaint Form.

Chapter 2:

Title VI and Environmental Justice Program

2.0 Policy Statement

The SETRPC-MPO is the acting transportation planning agency for Harding, Jasper, Jefferson, and Orange Counties metropolitan planning area (MPA) and is the designated recipient of federal transportation funds. As such, the goal of the SETRPC-MPO is to not discriminate against any person with respect to an MPO program, activity, or service, nor to adversely impact Environmental Justice populations disproportionately. Therefore, the SETRPC-MPO has developed the following policy statement:

The SETRPC-MPO assures that no person shall, on the grounds of race, color, national origin, sex, age, disability, or income status, as provided by Title VI of the Civil Rights Act of 1964, the Civil Rights Restoration Act of 1987 (P.L. 100.259), and other related federal orders, directives, and guidelines, be excluded from participation in, be denied the benefits of, or be otherwise subjected to discrimination or retaliation under any program or activity. Additionally, per Executive Order 12898 (Environmental Justice) and subsequent United States Department of Transportation, Federal Highway Administration, and Federal Transit Administration directives, the SETRPC-MPO shall make every effort to identify and address, as appropriate, disproportionately high and adverse human health or environmental effects of the SETRPC-MPO's programs, policies, and activities on Title VI and Environmental Justice protected populations. Furthermore, the SETRPC-MPO assures that every effort will be made to ensure nondiscrimination in all of its programs and activities, whether those programs or activities are federally funded or not. In the event that the SETRPC-MPO distributes federal aid funds to another entity, the MPO will include Title VI language in all written agreements. The Title VI Coordinator is responsible for carrying out the activities documented in the SETRPC-MPO's Title VI and Environmental Justice Program.

2.1 Title VI and Environmental Justice Program Elements

The following seven elements comprise the SETRPC-MPO's formal Title VI and Environmental Justice Program. The implementation of these activities will be the responsibility of the SETRPC-MPO's Title VI Coordinator, with assistance from other MPO support staff.

2.1.1 Data Collection and Analysis

In order to adequately address Title VI and Environmental Justice requirements, the SETRPC-MPO will regularly gather and analyze demographic data related to race, color, national origin, age, income level, language spoken, disability, and gender for the SETRPC-MPO planning area (Hardin, Jasper, Jefferson, and Orange Counties). This demographic data will be used to better target public outreach efforts and to consider Environmental Justice issues, as needed. Data from the United States Census Bureau's decennial Census and the annual American Community Survey will be regularly reviewed to ensure that the most current data is available to sufficiently meet the requirements of the SETRPC-MPO's Title VI and Environmental Justice Program. This data analysis will be updated to include new data as it becomes available.

2.1.2 Public Participation

The SETRPC-MPO seeks to provide equal access to all citizens through an inclusive and robust public participation process. This process is documented in the MPO's Public Participation Plan (PPP), which describes in detail the broad range of public outreach and participation techniques that the MPO utilizes to reach the community at large. The PPP explicitly states that the SETRPC—MPO will ensure that groups that have historically been underserved, including minority, elderly, disabled, low-income, and limited English proficiency populations, will be encouraged to participate in the transportation planning process. Key strategies that the SETRPC-MPO will employ to engage these population groups include:

- ➔ Conduct meetings at locations that are accessible by public transit and are compliant with the Americans with Disabilities Act.
- ➔ Seek assistance from community leaders and organizations to facilitate involvement of traditionally underserved populations.
- ➔ Provide interpretation services or other special accommodations that are requested.
- ➔ Provide language assistance to persons that do not speak English as their primary language and have limited ability to read, speak, or understand English.
- ➔ Routinely evaluate the effectiveness of all communications and public participation efforts to reach underserved populations and make appropriate adjustments as necessary.

2.1.3 Transportation Planning Process

The SETRPC-MPO is responsible for conducting a continuing, comprehensive, and cooperative (3-C) transportation planning process that results in plans and programs that are for the benefit of all residents of the metropolitan planning area. This transportation planning process results in four planning-related documents:

- ➔ **Unified Planning Work Program (UPWP)** – An annual statement of work that identifies the planning priorities and activities to be carried out within the SETRPC-MPO metropolitan planning area for a given fiscal year (October 1 to September 30).
- ➔ **Public Participation Plan (PPP)** – A set of guidelines that outlines the procedures, tools, techniques, and expectations for public outreach and education during the transportation planning and development processes.

- ➔ **Metropolitan Transportation Plan (MTP)** – a long-range multimodal transportation plan that includes the set of projects, programs, and policies that are anticipated to be implanted over a 20-year planning horizon.
- ➔ **Transportation Improvement Program (TIP)** – A prioritized listing of transportation projects and programs covering a period of four years, representing the short-range implementation program of the MTP.

The SETRPC-MPO is committed to ensuring that its programs, plans, and projects meet the needs of all persons, regardless of socioeconomic background, and avoid disproportionately high and adverse human health or environmental effects, including social and economic effects, on Title VI and Environmental Justice projected populations. To support this commitment, the SETRPC-MPO has developed a process to consider all submitted projects early in the transportation process rather than after a project has progressed to the alternatives analysis and design stages. Considering a project cost, benefits, and impacts together with Environmental Justice criteria early in the planning process is intended to promote developing more feasible and prudent projects that can contribute to equity in the transportation planning process. The SETRPC-MPO will implement this goal through three distinct steps:

- ➔ Maintain a robust public outreach process to provide meaningful opportunities for involvement.
- ➔ Identify and map target populations through an analytical process.
- ➔ Explicitly consider impacts of transportation and target populations.

Robust public involvement will be guided by the SETRPC-MPO PPP and Limited English Proficiency Plan. Public participation will solicit and consider input from all groups and citizens affected by the SETRPC-MPO's transportation plans or programs. The needs of those that have traditionally been underserved by the transportation system will be particularly considered. The analytical process involves two distinct steps: identification of target populations and mapping the results.

The first part of the analytical process, identification of target populations, builds a demographic profile of the region using Census statistical data. The data is used to identify Census Block Groups within the region that have a higher percentage of any targeted population than the regional percentage. This profile is included in Appendix 1 of this document. Data from this profile is used to define Environmental Justice Communities of Concern (EJCOC) for each specific targeted population. The EJCOCs are supplemented with additional data to identify populations with Limited English Proficiency (LEP), which are included in the analytical process.

The second part of the analytical process is to enter the EJCOC's demographic data into a Geographic Information System (GIS). The GIS displays layers of information such as transportation projects, transit routes, significant employment destinations, and locations of government services, so that the potential for disproportionate impacts to areas within EJCOCs can be evaluated for every project.

The result of this analytical process is the identification of transportation projects that are located within an EJCOC or have an impact on a targeted population. The impacts of transportation projects in EJCOCs are explicitly scored in the Project Selection Process. The Project Selection Process has two

components: a Road Evaluation Track and a Transportation Choices and Livability Evaluation Track. Each evaluation track evaluates a project on multiple criteria, so that the impacts of a project on EJCOs are considered explicitly, but also are considered within the content of additional concerns such as access to transit and other multimodal facilities, Context Sensitive Solutions, compliance with the Americans with Disabilities Act, and alternatives analysis of routes for new construction.

This comprehensive project selection process and scoring criteria define a process with an analytical basis that considers the impact of transportation decisions and projects on EJCOs both explicitly and within the overall transportation planning context. However, the process is similar to the NEPA process for evaluating the impacts of transportation projects on the environment, since it is intended only to identify high-level impacts. Like the NEPA process, if the evaluation of a specific project reveals that it does have a potential impact, it may require more in-depth study to determine the full scope and scale of the impacts and weight them against project benefits.

2.1.4 Measures of Effectiveness

Measures of Effectiveness (MOEs) for the Title VI program were developed to ensure that targeted communities are included in the public involvement process and that they have meaningful opportunities for involvement. The MOEs for this program are shared with the MOEs for the overall public participation process. Specific MOEs for the Title VI program include:

- ➔ 100 percent of all formal public meetings, project meetings, and committee meetings are accessible to persons with disabilities and are located on a fixed-route public transit line.
- ➔ 100 percent of requests for translations of planning materials that are requested by LEP populations meeting the four-factor criteria receive responses within three working days. The translations of the documents may take longer, depending on their length and complexity, and the four-factor criteria in some cases allows a translation request to be denied for non-vital or costly requests.
- ➔ 100 percent of special interest groups, organizations, or governments listed in the public participation contacts database are contacted once per year to verify their information and maintain their interest in the process.
- ➔ 50 percent of individuals listed in the public participation contacts database are contacted once per year to verify their information and maintain their interest in the process.

2.1.5 Contractors

From time to time, the SETRPC-MPO executes contracts with consultants to assist in carrying out the 3-C transportation planning process. All SETRPC-MPO consultant contracts include language stating that the contractor agrees that persons shall not be excluded from participation in, be denied the benefit of, or otherwise be subject to discrimination during the work and activities related to the contract.

2.1.6 Training Program

As changes to federal and state regulations and guidance related to Title VI and Environmental Justice change, SETRPC-MPO staff will seek the necessary training to ensure continued compliance with these issues.

2.1.7 Complaint Procedures

Any person who believes he or she, or any specific class of persons, has been subjected to discrimination or retaliation prohibited by the Title VI of the Civil Rights Act of 1964, as amended, and related statutes, may file a formal written complaint using the form found in Appendix 2 of this document. All formal written complaints received will be addressed, investigated, and responded to by the SETRPC-MPO, in cooperation with its state and federal planning partners.

Chapter 3: Environmental Justice Analysis

SETRPC has updated its socioeconomic maps for Title VI and Environmental Justice analysis based on data from the U.S. Census Bureau 2017-2021 American Community Survey (ACS) 5-Year Estimates. The environmental justice analysis provides an overview of the environments and settings that describe the underserved communities in the region. Identifying the locations of protected communities is essential to understanding and recognizing the impacts these communities may be exposed to from transportation projects or public actions.

Determination of the characteristics of the protected community can also guide targeted public outreach efforts and inform public engagement strategies throughout the metropolitan transportation planning process. Having the ability to identify the needs of the protected population would permit the strategic allocation of transportation investments to those underserved communities and facilitate the selection of appropriate actions to avoid, minimize, or mitigate any potentially adverse project impacts.

3.0 Definitions for the Protected Population

Executive Order 12898: “Federal Actions to Address Environmental Justice in Minority Populations and Low-Income Populations” defines the protected population for environmental justice oversight as Minority Populations, Low-Income Populations, and the Native Indian Tribes.

SETRPC uses the Federal Transit Administration (FTA) and Federal Highway Administration (FHWA) definition of Minority Persons:

- ➔ Black: persons having origins in any of the black racial groups of Africa.
- ➔ Hispanic or Latino: persons having Mexican, Puerto Rican, Cuban, Central or South American, or other Spanish culture or origin, regardless of race.
- ➔ Asian Americans: persons having origins in any of the original peoples of the Far East, Southeast Asia, or the Indian subcontinent.
- ➔ American Indian and Alaskan Native: persons having origins in any of the original people of North America, South America (Including Central America), and who maintain cultural identification through tribal affiliation or community recognition.
- ➔ Native Hawaiian and other Pacific Islanders: persons having origins in any of the original peoples of Hawaii, Guam, Samoa, or other Pacific Islands.

SETRPC defines low-income status as a household income level that is below the current Texas Health and Human Services (HHS) Supplemental Nutrition Assistance Program (SNAP) eligibility. Table 1 shows the amount of income that most people or families can earn to be eligible for SNAP.

Table 1: SNAP Maximum Monthly Income Limits

Family Size	Maximum Monthly Income
1	\$1,869
2	\$2,518
3	\$3,167
4	\$3,816
5	\$4,465
For each additional person, add:	\$649

Source: Texas Health and Human Services. SNAP Food Benefits.

Executive Order 13166 requires federal agencies and recipients of federal funds to provide special accommodations for persons with Limited English Proficiency (LEP) to ensure that linguistic barriers do not prevent their having meaningful access to the benefits and opportunities to participate in federally assisted programs. Like Executive Order 12898, the LEP executive order is one of the federal nondiscrimination laws that come under the umbrella of a Title VI program. The LEP disadvantage is commonly associated with one's race or national origin and is therefore directly related to Title VI, but additionally a concurrent concern in individuals protected for environmental justice purposes.

Senior population, defined as the population age 65 years and over, tend to have mobility challenges. The senior population is less likely to have the ability to drive a personal automobile and is more likely to be dependent on transit services or other people to travel the region. Senior status can be a disadvantage for minority populations, especially when coupled with a low-income status.

3.1 Threshold Analysis

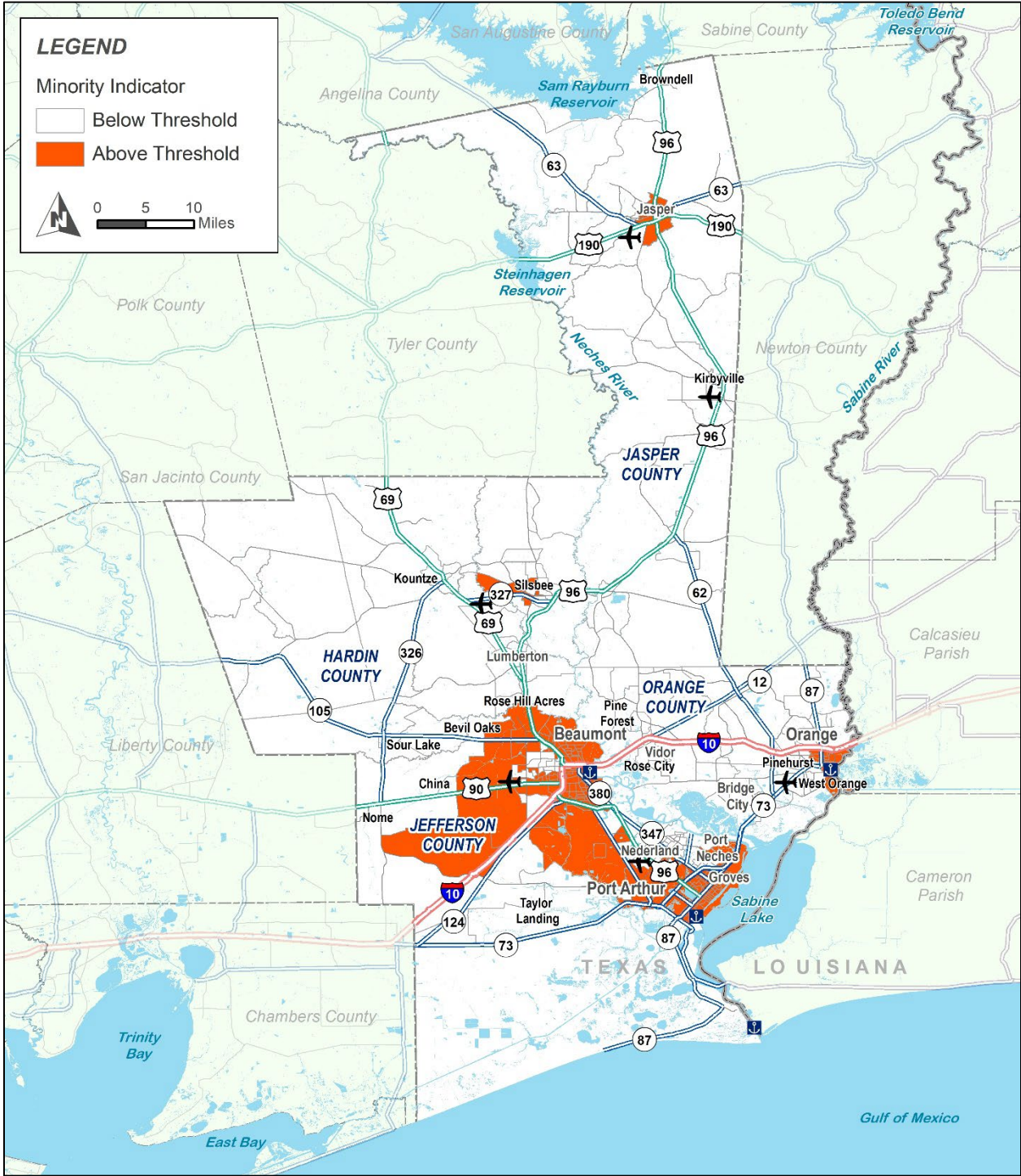
Communities sensitive for environmental justice in the SETRPC planning area are identified through a threshold analysis. A census block-group that meets or exceeds this threshold value is considered sensitive for environmental justice.

Indicators and thresholds for the SETRPC environmental justice analysis include:

- ➔ Minority Populations: Percent minority Greater than or Equal to 50 percent.
- ➔ Low-Income Household: Medium Household Income below current Texas Health and Human Services (HHS) Supplemental Nutrition Assistance Program (SNAP) Eligibility Threshold (see Table 1).
- ➔ LEP Population: LEP Population greater than 50 persons in population and greater than or equal to 5 percent of population.
- ➔ Senior Population: 65 and Over Population greater than or equal to 25 percent.

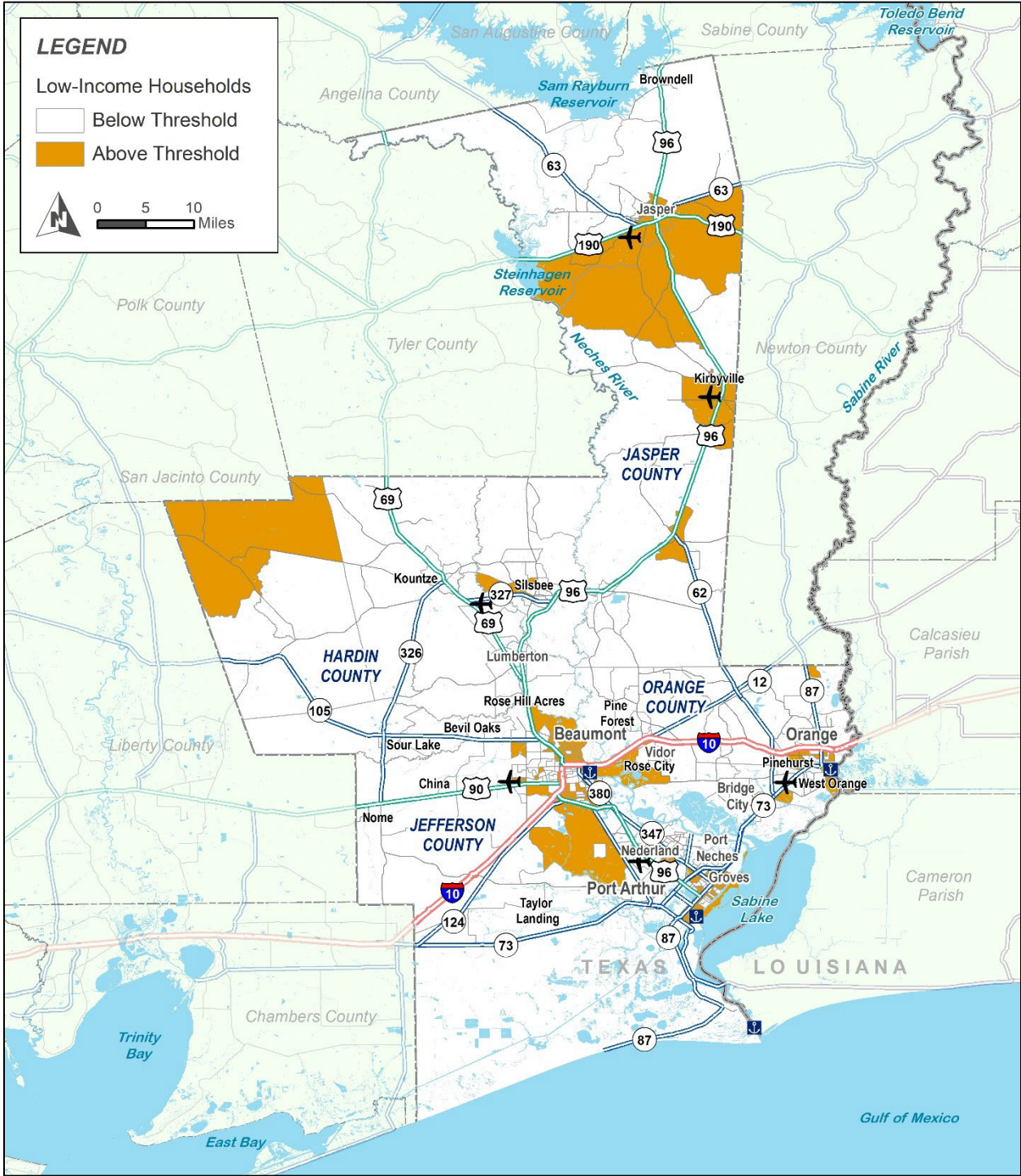
For each indicator, maps in Figure 1 through Figure 5 show Census block-groups in the four-county region that are above or below these thresholds.

Figure 1: Census Block-Groups with a High Minority Population Concentration



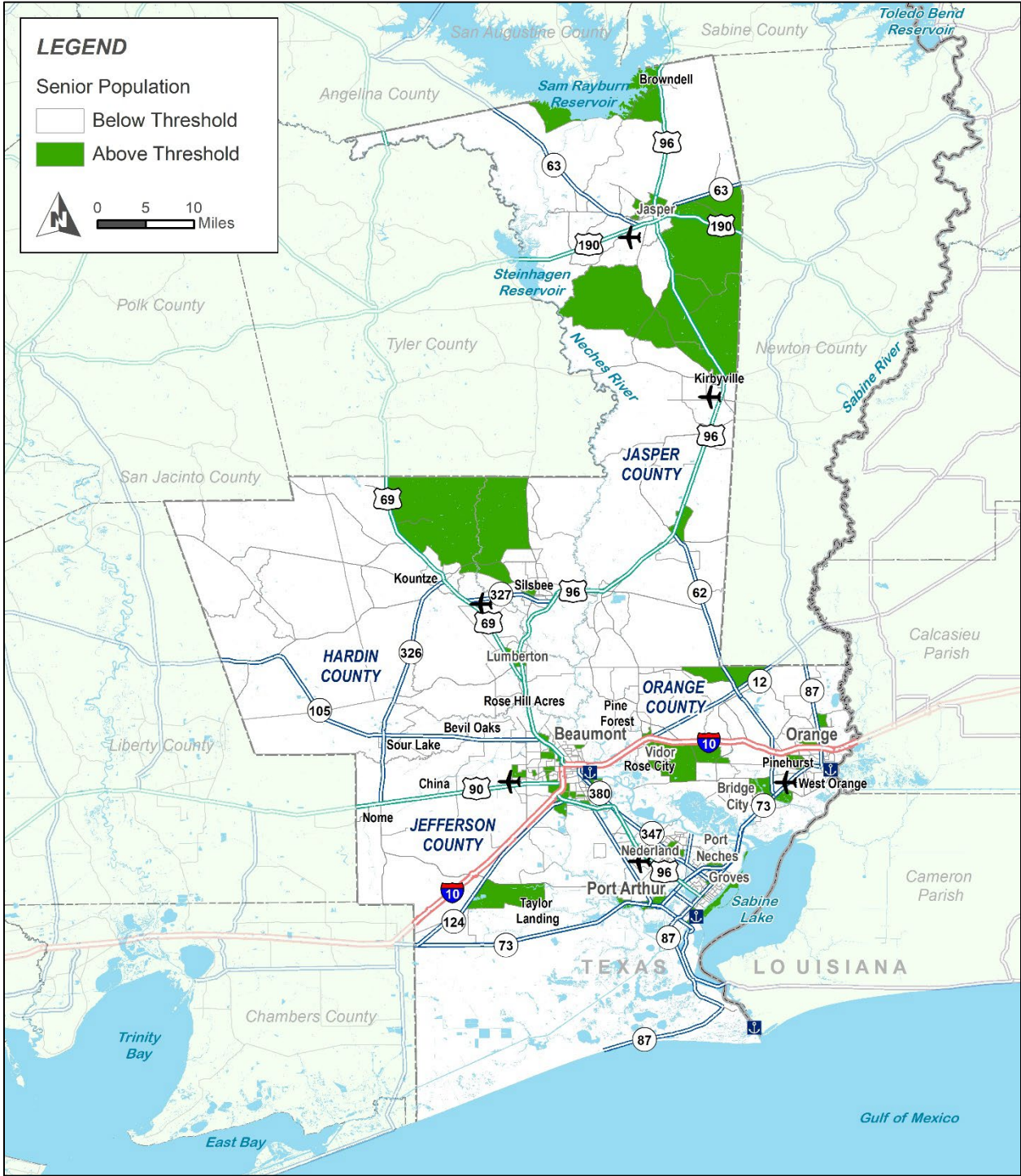
Source: U.S. Census Bureau. 2017-2021 American Community Survey 5-Year Estimates.

Figure 2: Census Block-Groups with a High Concentration of Low-Income Households



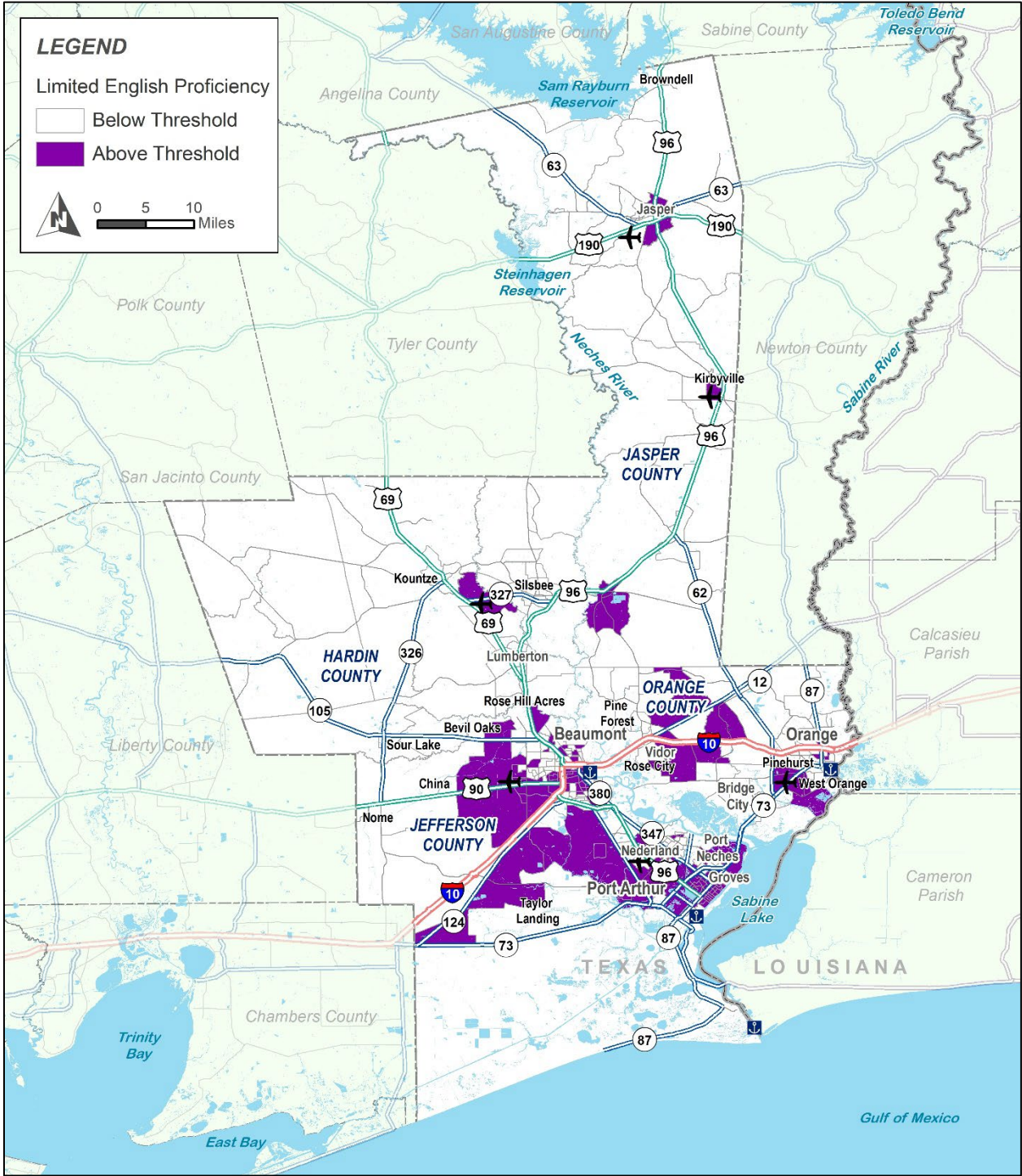
Source: U.S. Census Bureau. 2017-2021 American Community Survey 5-Year Estimates.

Figure 3: Census Block-Groups with a High Concentration of Senior Population



Source: U.S. Census Bureau. 2017-2021 American Community Survey 5-Year Estimates.

Figure 4: Census Block-Groups with a High Concentration of Limited English Proficiency (LEP) Populations



Source: U.S. Census Bureau. 2017-2021 American Community Survey 5-Year Estimates.

3.2 Concentrations of Disadvantage

Executive Order 12898 identifies only minority and low-income status as the primary indicators of disadvantage for environmental justice considerations. As described previously, SETRPC considers LEP and senior status as supplemental socioeconomic indicators for disadvantage and has incorporated these indicators within its environmental justice analysis. Many Census block-groups have been identified with high concentrations of multiple indicators of disadvantage.

SETRPC developed an EJ composite score for the number of indicators for which each Census block-group met or exceeded the defined thresholds. Census block-groups were scored a 1 or a 0 for each indicator. Census block-groups that met or exceeded the indicator threshold were scored a 1. Census block-groups that were below the indicator threshold were scored a 0. A composite score was developed by adding the sum of the scores across all indicators for each Census block-group. Census block-groups with composite scores of 2 or greater are defined as Concentrations of Disadvantage.

About 41 percent of the Census block-groups within the 4-county SETRPC region are defined as Concentrations of Disadvantage. Table 2 shows a summary of the EJ composite scores for the region, and Figure 5 identifies the Concentrations of Disadvantage.

Table 2: EJ Composite Scores

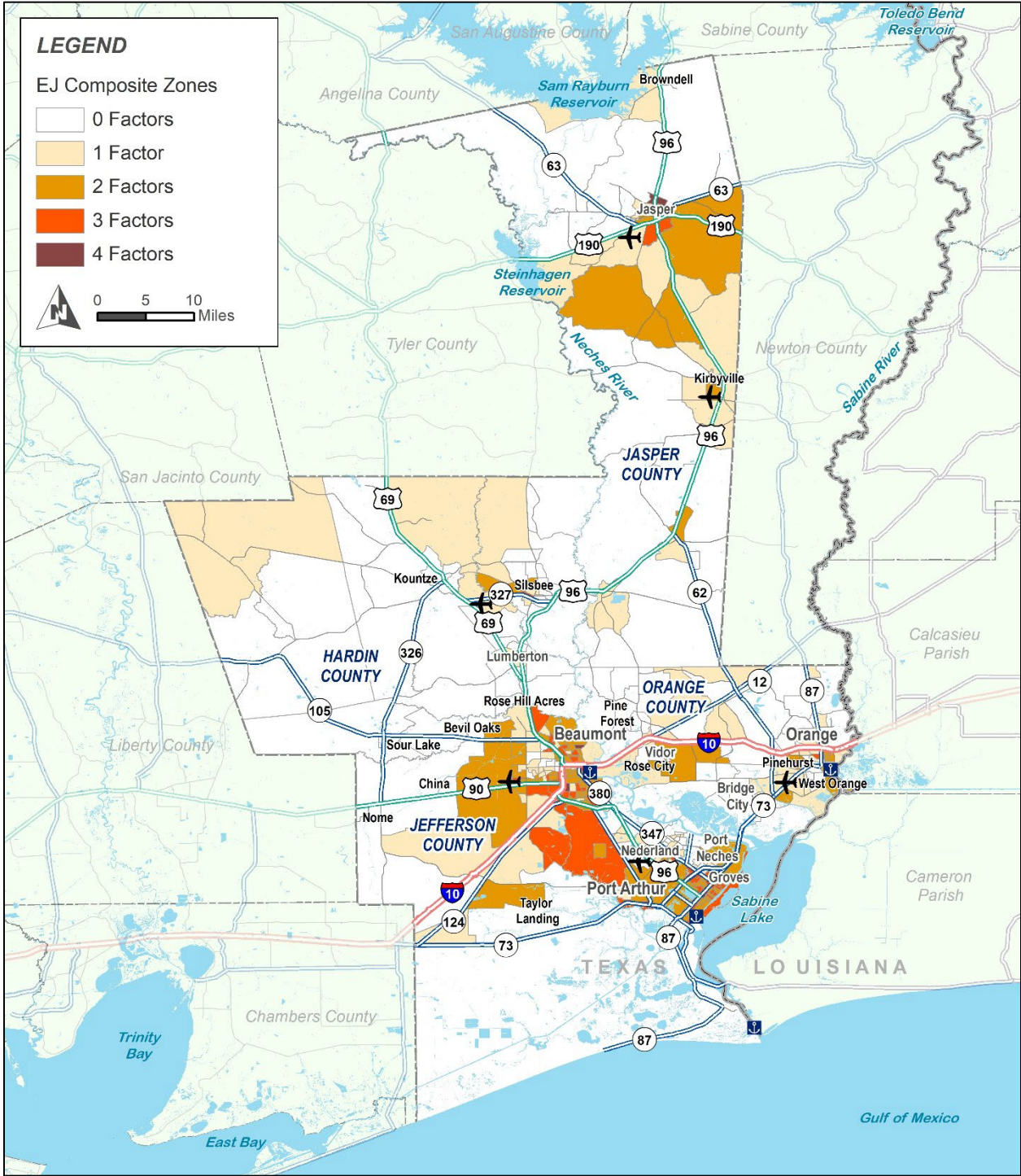
Number of Indictors with Thresholds Met/Exceeded	Number of Census Block-Groups	Percent of Census Block-Groups in SETRPC Region
0 Indictors	120	34%
1 Indictor	89	25%
2 Indictors*	94	27%
3 Indictors*	47	13%
4 Indictors*	4	1%

*Census block-groups with two or greater indicators that meet or exceed thresholds are defined as Concentrations of Disadvantage.

Source: WSP analysis of U.S. Census Bureau, 2017-2021 American Community Survey 5-Year Estimates

Table 3 shows the full demographic profile of Title VI populations by Census block-groups from the 2017-2021 ACS 5-Year Estimates. The table includes the indicator scores and the EJ composite score for each Census block-group. Census block-groups with EJ composite scores of 2 or greater are defined as Concentrations of Disadvantage.

Figure 5: Census Block-Groups with Concentrations of Disadvantage



Source: WSP analysis of U.S. Census Bureau, 2017-2021 American Community Survey 5-Year Estimates

Table 3: Title VI Populations by Census Block-Groups

County	Tract	Block-Group	Total Population	Total Minority Population	Percent Minority Population	Median Household Income	Total Population (Age 5 and Over for LEP Analysis)	Total LEP Population	Percent LEP Population	Total Senior Population (Age 65 Years and Over)	Percent Senior Population (Age 65 Years and Over)	Minority Indicator Score	Income Indicator Score	LEP Indicator Score	Senior Indicator Score	EJ Composite Score
Hardin	30100	1	1,130	98	8.67	\$27,268	1,056	0	0	244	21.59	0	1	0	0	1
Hardin	30100	2	1,281	48	3.75	\$0	1,271	12	0.94	106	8.27	0	0	0	0	0
Hardin	30100	3	995	8	0.8	\$66,429	909	0	0	203	20.4	0	0	0	0	0
Hardin	30200	1	1,898	480	25.29	\$89,167	1,867	76	4.07	139	7.32	0	0	0	0	0
Hardin	30200	2	1,873	210	11.21	\$52,228	1,688	59	3.5	304	16.23	0	0	0	0	0
Hardin	30200	3	1,120	193	17.23	\$95,486	1,075	34	3.16	215	19.2	0	0	0	0	0
Hardin	30200	4	1,466	37	2.52	\$96,406	1,421	0	0	112	7.64	0	0	0	0	0
Hardin	30301	1	1,331	0	0	\$64,955	1,259	0	0	280	21.04	0	0	0	0	0
Hardin	30301	2	518	0	0	\$0	518	0	0	216	41.7	0	0	0	1	1
Hardin	30301	3	907	317	34.95	\$0	770	145	18.83	210	23.15	0	0	1	0	1
Hardin	30302	1	1,960	335	17.09	\$57,857	1,806	0	0	218	11.12	0	0	0	0	0
Hardin	30302	2	3,055	246	8.05	\$65,141	2,735	39	1.43	391	12.8	0	0	0	0	0
Hardin	30302	3	2,618	384	14.67	\$0	2,471	88	3.56	168	6.42	0	0	0	0	0
Hardin	30400	1	893	237	26.54	\$49,362	874	40	4.58	213	23.85	0	0	0	0	0
Hardin	30400	2	469	118	25.16	\$59,004	447	13	2.91	84	17.91	0	0	0	0	0
Hardin	30400	3	865	50	5.78	\$73,125	782	1	0.13	145	16.76	0	0	0	0	0
Hardin	30501	1	1,841	376	20.42	\$98,827	1,710	0	0	329	17.87	0	0	0	0	0
Hardin	30501	2	1,515	185	12.21	\$101,625	1,460	46	3.15	175	11.55	0	0	0	0	0
Hardin	30501	3	1,360	56	4.12	\$124,309	1,348	35	2.6	231	16.99	0	0	0	0	0
Hardin	30503	1	737	93	12.62	\$171,726	685	0	0	15	2.04	0	0	0	0	0
Hardin	30503	2	1,930	285	14.77	\$76,284	1,801	0	0	129	6.68	0	0	0	0	0
Hardin	30503	3	446	16	3.59	\$86,012	436	4	0.92	33	7.4	0	0	0	0	0
Hardin	30504	1	2,058	78	3.79	\$71,083	1,898	69	3.64	524	25.46	0	0	0	1	1
Hardin	30504	2	2,696	248	9.2	\$84,453	2,582	68	2.63	816	30.27	0	0	0	1	1
Hardin	30600	1	955	63	6.6	\$53,347	928	0	0	236	24.71	0	0	0	0	0
Hardin	30600	2	3,412	85	2.49	\$49,366	3,115	0	0	640	18.76	0	0	0	0	0
Hardin	30700	1	788	540	68.53	\$59,324	736	26	3.53	14	1.78	1	0	0	0	1
Hardin	30700	2	1,941	672	34.62	\$61,290	1,815	85	4.68	417	21.48	0	0	0	0	0
Hardin	30700	3	808	55	6.81	\$0	759	14	1.84	108	13.37	0	0	0	0	0
Hardin	30700	4	462	0	0	\$77,708	446	0	0	76	16.45	0	0	0	0	0
Hardin	30800	1	1,029	190	18.46	\$0	948	8	0.84	131	12.73	0	0	0	0	0
Hardin	30800	2	965	485	50.26	\$0	890	0	0	188	19.48	1	0	0	0	1
Hardin	30800	3	526	457	86.88	\$38,339	480	0	0	146	27.76	1	1	0	1	3
Hardin	30800	4	573	157	27.4	\$54,177	543	0	0	201	35.08	0	0	0	1	1

County	Tract	Block-Group	Total Population	Total Minority Population	Percent Minority Population	Median Household Income	Total Population (Age 5 and Over for LEP Analysis)	Total LEP Population	Percent LEP Population	Total Senior Population (Age 65 Years and Over)	Percent Senior Population (Age 65 Years and Over)	Minority Indicator Score	Income Indicator Score	LEP Indicator Score	Senior Indicator Score	EJ Composite Score
Hardin	30800	5	913	612	67.03	\$41,116	836	0	0	178	19.5	1	1	0	0	2
Hardin	30900	1	1,754	163	9.29	\$83,592	1,712	48	2.8	335	19.1	0	0	0	0	0
Hardin	30900	2	1,401	62	4.43	\$70,455	1,188	0	0	177	12.63	0	0	0	0	0
Hardin	30900	3	1,700	93	5.47	\$84,250	1,564	24	1.53	222	13.06	0	0	0	0	0
Hardin	31000	1	632	47	7.44	\$61,563	577	0	0	104	16.46	0	0	0	0	0
Hardin	31000	2	1,931	117	6.06	\$52,784	1,870	6	0.32	516	26.72	0	0	0	1	1
Hardin	31000	3	1,372	450	32.8	\$65,590	1,358	16	1.18	274	19.97	0	0	0	0	0
Jasper	950101	1	1,379	69	5	\$46,750	1,299	9	0.69	359	26.03	0	0	0	1	1
Jasper	950101	2	810	136	16.79	\$0	810	0	0	128	15.8	0	0	0	0	0
Jasper	950102	1	1,509	63	4.17	\$56,914	1,509	0	0	371	24.59	0	0	0	0	0
Jasper	950102	2	1,285	537	41.79	\$0	1,104	10	0.91	142	11.05	0	0	0	0	0
Jasper	950200	1	471	441	93.63	\$45,788	457	80	17.51	127	26.96	1	1	1	1	4
Jasper	950200	2	906	44	4.86	\$57,875	798	0	0	256	28.26	0	0	0	1	1
Jasper	950200	3	1,477	1,015	68.72	\$31,539	1,324	37	2.79	200	13.54	1	1	0	0	2
Jasper	950200	4	353	263	74.5	\$29,400	353	0	0	48	13.6	1	1	0	0	2
Jasper	950300	1	255	206	80.78	\$0	224	0	0	95	37.25	1	0	0	1	2
Jasper	950300	2	850	773	90.94	\$36,810	835	16	1.92	110	12.94	1	1	0	0	2
Jasper	950300	3	1,789	1,036	57.91	\$35,326	1,745	195	11.17	207	11.57	1	1	1	0	3
Jasper	950400	1	1,148	244	21.25	\$65,547	1,041	1	0.1	252	21.95	0	0	0	0	0
Jasper	950400	2	2,152	431	20.03	\$40,531	1,942	54	2.78	503	23.37	0	1	0	0	1
Jasper	950400	3	1,635	804	49.17	\$37,460	1,635	39	2.39	487	29.79	0	1	0	1	2
Jasper	950500	1	1,610	128	7.95	\$51,842	1,610	0	0	510	31.68	0	0	0	1	1
Jasper	950500	2	1,024	85	8.3	\$26,548	1,024	0	0	274	26.76	0	1	0	1	2
Jasper	950500	3	1,531	145	9.47	\$59,194	1,348	0	0	233	15.22	0	0	0	0	0
Jasper	950500	4	1,023	444	43.4	\$45,446	996	49	4.92	185	18.08	0	1	0	0	1
Jasper	950600	1	1,292	262	20.28	\$36,389	1,200	41	3.42	198	15.33	0	1	0	0	1
Jasper	950600	2	987	476	48.23	\$24,243	902	54	5.99	239	24.21	0	1	1	0	2
Jasper	950701	1	1,404	373	26.57	\$113,125	1,232	0	0	177	12.61	0	0	0	0	0
Jasper	950701	2	1,127	49	4.35	\$87,560	1,127	16	1.42	187	16.59	0	0	0	0	0
Jasper	950701	3	1,034	93	8.99	\$88,971	1,002	82	8.18	151	14.6	0	0	1	0	1
Jasper	950702	1	1,818	74	4.07	\$51,958	1,675	0	0	377	20.74	0	0	0	0	0
Jasper	950702	2	759	161	21.21	\$0	723	0	0	171	22.53	0	0	0	0	0
Jasper	950702	3	1,552	210	13.53	\$0	1,392	14	1.01	144	9.28	0	0	0	0	0
Jasper	950800	1	784	93	11.86	\$38,875	771	0	0	281	35.84	0	1	0	1	2
Jasper	950800	2	1,405	54	3.84	\$29,583	1,367	8	0.59	280	19.93	0	1	0	0	1
Jefferson	101	1	2,226	1,661	74.62	\$59,755	2,133	28	1.31	257	11.55	1	0	0	0	1

County	Tract	Block-Group	Total Population	Total Minority Population	Percent Minority Population	Median Household Income	Total Population (Age 5 and Over for LEP Analysis)	Total LEP Population	Percent LEP Population	Total Senior Population (Age 65 Years and Over)	Percent Senior Population (Age 65 Years and Over)	Minority Indicator Score	Income Indicator Score	LEP Indicator Score	Senior Indicator Score	EJ Composite Score
Jefferson	101	2	2,597	1,304	50.21	\$56,771	2,399	94	3.92	249	9.59	1	0	0	0	1
Jefferson	102	1	2,762	2,246	81.32	\$42,813	2,589	197	7.61	419	15.17	1	1	1	0	3
Jefferson	103	1	1,510	1,442	95.5	\$30,216	1,379	0	0	201	13.31	1	1	0	0	2
Jefferson	103	2	1,790	1,499	83.74	\$14,870	1,439	60	4.17	171	9.55	1	1	0	0	2
Jefferson	200	1	786	680	86.51	\$42,723	771	89	11.54	52	6.62	1	1	1	0	3
Jefferson	200	2	1,392	1,209	86.85	\$0	1,176	10	0.85	171	12.28	1	0	0	0	1
Jefferson	200	3	1,010	702	69.5	\$75,474	974	1	0.1	174	17.23	1	0	0	0	1
Jefferson	200	4	1,817	1,440	79.25	\$64,040	1,691	10	0.59	503	27.68	1	0	0	1	2
Jefferson	304	1	1,319	739	56.03	\$63,678	1,301	0	0	249	18.88	1	0	0	0	1
Jefferson	304	2	1,118	871	77.91	\$37,739	1,079	61	5.65	16	1.43	1	1	1	0	3
Jefferson	304	3	1,023	681	66.57	\$53,237	1,012	282	27.87	186	18.18	1	0	1	0	2
Jefferson	304	4	664	307	46.23	\$29,412	636	65	10.22	164	24.7	0	1	1	0	2
Jefferson	304	5	2,020	1,824	90.3	\$65,389	2,000	41	2.05	193	9.55	1	0	0	0	1
Jefferson	306	1	1,006	160	15.9	\$98,697	991	9	0.91	305	30.32	0	0	0	1	1
Jefferson	306	2	591	123	20.81	\$0	560	0	0	205	34.69	0	0	0	1	1
Jefferson	306	3	1,297	784	60.45	\$59,000	1,203	25	2.08	124	9.56	1	0	0	0	1
Jefferson	306	4	644	49	7.61	\$41,571	644	0	0	128	19.88	0	1	0	0	1
Jefferson	307	1	1,277	730	57.17	\$43,258	1,213	11	0.91	65	5.09	1	1	0	0	2
Jefferson	307	2	2,002	1,155	57.69	\$55,513	1,670	89	5.33	138	6.89	1	0	0	0	1
Jefferson	307	3	1,127	657	58.3	\$65,750	974	40	4.11	183	16.24	1	0	0	0	1
Jefferson	309	1	966	359	37.16	\$72,875	964	84	8.71	318	32.92	0	0	1	1	2
Jefferson	309	2	1,510	952	63.05	\$72,321	1,389	48	3.46	312	20.66	1	0	0	0	1
Jefferson	310	1	1,084	531	48.99	\$69,821	1,062	38	3.58	160	14.76	0	0	0	0	0
Jefferson	310	2	1,816	1,184	65.2	\$34,136	1,513	87	5.75	310	17.07	1	1	0	0	2
Jefferson	310	3	951	151	15.88	\$111,000	823	26	3.16	311	32.7	0	0	0	1	1
Jefferson	310	4	1,750	933	53.31	\$98,317	1,550	75	4.84	295	16.86	1	0	0	0	1
Jefferson	311	1	2,000	591	29.55	\$74,273	1,940	15	0.77	348	17.4	0	0	0	0	0
Jefferson	311	2	1,919	94	4.9	\$193,482	1,856	0	0	338	17.61	0	0	0	0	0
Jefferson	312	1	1,948	826	42.4	\$130,625	1,803	56	3.11	243	12.47	0	0	0	0	0
Jefferson	312	2	1,112	415	37.32	\$76,591	1,006	88	8.75	207	18.62	0	0	1	0	1
Jefferson	313	1	2,264	1,534	67.76	\$37,170	1,948	362	18.58	394	17.4	1	1	1	0	3
Jefferson	313	2	1,200	624	52	\$24,258	1,171	18	1.54	305	25.42	1	1	0	1	3
Jefferson	313	3	713	283	39.69	\$91,468	713	0	0	102	14.31	0	0	0	0	0
Jefferson	314	1	2,445	465	19.02	\$135,729	2,405	53	2.2	757	30.96	0	0	0	1	1
Jefferson	400	1	978	725	74.13	\$25,071	820	27	3.29	69	7.06	1	1	0	0	2
Jefferson	400	2	710	245	34.51	\$45,506	649	41	6.32	183	25.77	0	1	0	1	2

County	Tract	Block-Group	Total Population	Total Minority Population	Percent Minority Population	Median Household Income	Total Population (Age 5 and Over for LEP Analysis)	Total LEP Population	Percent LEP Population	Total Senior Population (Age 65 Years and Over)	Percent Senior Population (Age 65 Years and Over)	Minority Indicator Score	Income Indicator Score	LEP Indicator Score	Senior Indicator Score	EJ Composite Score
Jefferson	400	3	1,259	405	32.17	\$128,000	1,145	0	0	71	5.64	0	0	0	0	0
Jefferson	400	4	1,447	116	8.02	\$73,851	1,203	0	0	146	10.09	0	0	0	0	0
Jefferson	500	1	1,399	1,259	89.99	\$35,703	1,203	183	15.21	180	12.87	1	1	1	0	3
Jefferson	500	2	801	717	89.51	\$42,000	761	42	5.52	21	2.62	1	1	0	0	2
Jefferson	600	1	797	707	88.71	\$39,091	797	0	0	52	6.52	1	1	0	0	2
Jefferson	600	2	1,021	1,021	100	\$27,609	972	113	11.63	215	21.06	1	1	1	0	3
Jefferson	600	3	744	729	97.98	\$31,528	692	14	2.02	181	24.33	1	1	0	0	2
Jefferson	600	4	552	552	100	\$0	552	0	0	91	16.49	1	0	0	0	1
Jefferson	600	5	260	260	100	\$28,825	260	0	0	17	6.54	1	1	0	0	2
Jefferson	600	6	1,530	1,462	95.56	\$40,104	1,457	554	38.02	315	20.59	1	1	1	0	3
Jefferson	700	1	746	657	88.07	\$40,263	714	75	10.5	243	32.57	1	1	1	1	4
Jefferson	700	2	680	650	95.59	\$16,211	491	0	0	48	7.06	1	1	0	0	2
Jefferson	700	3	317	309	97.48	\$19,438	317	11	3.47	77	24.29	1	1	0	0	2
Jefferson	700	4	518	518	100	\$0	471	11	2.34	101	19.5	1	0	0	0	1
Jefferson	900	1	435	408	93.79	\$26,510	397	8	2.02	102	23.45	1	1	0	0	2
Jefferson	900	2	1,350	1,274	94.37	\$23,004	1,103	106	9.61	73	5.41	1	1	1	0	3
Jefferson	1100	1	1,063	719	67.64	\$0	1,010	27	2.67	189	17.78	1	0	0	0	1
Jefferson	1100	2	562	451	80.25	\$0	524	62	11.83	80	14.23	1	0	1	0	2
Jefferson	1100	3	1,169	584	49.96	\$90,750	1,117	19	1.7	234	20.02	0	0	0	0	0
Jefferson	1200	1	1,443	1,133	78.52	\$58,750	1,380	266	19.28	138	9.56	1	0	1	0	2
Jefferson	1200	2	768	591	76.95	\$48,242	728	167	22.94	99	12.89	1	0	1	0	2
Jefferson	1301	1	681	500	73.42	\$60,531	681	117	17.18	78	11.45	1	0	1	0	2
Jefferson	1301	2	1,724	927	53.77	\$54,205	1,525	118	7.74	220	12.76	1	0	1	0	2
Jefferson	1301	3	2,803	2,400	85.62	\$39,553	2,585	915	35.4	205	7.31	1	1	1	0	3
Jefferson	1301	4	1,183	856	72.36	\$0	1,158	118	10.19	446	37.7	1	0	1	1	3
Jefferson	1302	1	1,245	1,018	81.77	\$26,076	1,056	88	8.33	44	3.53	1	1	1	0	3
Jefferson	1302	2	2,116	1,674	79.11	\$74,167	1,824	137	7.51	193	9.12	1	0	1	0	2
Jefferson	1303	1	2,154	1,036	48.1	\$96,316	2,083	143	6.87	460	21.36	0	0	1	0	1
Jefferson	1303	2	837	675	80.65	\$56,066	809	0	0	195	23.3	1	0	0	0	1
Jefferson	1700	1	669	496	74.14	\$74,063	669	18	2.69	220	32.88	1	0	0	1	2
Jefferson	1700	2	327	327	100	\$39,875	327	11	3.36	50	15.29	1	1	0	0	2
Jefferson	1700	3	633	633	100	\$44,314	610	0	0	74	11.69	1	1	0	0	2
Jefferson	1900	1	1,093	910	83.26	\$41,536	1,008	251	24.9	67	6.13	1	1	1	0	3
Jefferson	1900	2	708	708	100	\$49,313	669	240	35.87	87	12.29	1	0	1	0	2
Jefferson	1900	3	1,066	1,047	98.22	\$50,616	1,056	204	19.32	129	12.1	1	0	1	0	2
Jefferson	2000	1	848	848	100	\$33,553	759	163	21.48	39	4.6	1	1	1	0	3

County	Tract	Block-Group	Total Population	Total Minority Population	Percent Minority Population	Median Household Income	Total Population (Age 5 and Over for LEP Analysis)	Total LEP Population	Percent LEP Population	Total Senior Population (Age 65 Years and Over)	Percent Senior Population (Age 65 Years and Over)	Minority Indicator Score	Income Indicator Score	LEP Indicator Score	Senior Indicator Score	EJ Composite Score
Jefferson	2000	2	1,584	1,499	94.63	\$47,604	1,450	267	18.41	269	16.98	1	0	1	0	2
Jefferson	2100	1	844	783	92.77	\$20,562	669	108	16.14	278	32.94	1	1	1	1	4
Jefferson	2100	2	896	812	90.62	\$38,899	829	221	26.66	59	6.58	1	1	1	0	3
Jefferson	2100	3	1,079	1,034	95.83	\$0	956	0	0	202	18.72	1	0	0	0	1
Jefferson	2200	1	1,873	1,862	99.41	\$36,204	1,734	25	1.44	156	8.33	1	1	0	0	2
Jefferson	2200	2	804	682	84.83	\$38,500	733	21	2.86	324	40.3	1	1	0	1	3
Jefferson	2200	3	272	272	100	\$23,724	272	0	0	103	37.87	1	1	0	1	3
Jefferson	2300	1	960	932	97.08	\$0	925	92	9.95	87	9.06	1	0	1	0	2
Jefferson	2300	2	452	452	100	\$61,156	452	0	0	177	39.16	1	0	0	1	2
Jefferson	2300	3	711	702	98.73	\$36,333	693	0	0	119	16.74	1	1	0	0	2
Jefferson	2300	4	606	571	94.22	\$59,286	469	33	7.04	128	21.12	1	0	0	0	1
Jefferson	2300	5	666	606	90.99	\$77,000	666	0	0	262	39.34	1	0	0	1	2
Jefferson	2400	1	576	491	85.24	\$47,949	567	17	3	47	8.16	1	0	0	0	1
Jefferson	2400	2	770	744	96.62	\$43,482	671	72	10.73	62	8.05	1	1	1	0	3
Jefferson	2400	3	656	596	90.85	\$25,604	593	95	16.02	35	5.34	1	1	1	0	3
Jefferson	2400	4	479	431	89.98	\$26,842	442	0	0	100	20.88	1	1	0	0	2
Jefferson	2500	1	1,313	1,247	94.97	\$39,063	1,188	107	9.01	210	15.99	1	1	1	0	3
Jefferson	2500	2	2,589	2,453	94.75	\$36,582	2,510	185	7.37	172	6.64	1	1	1	0	3
Jefferson	2600	1	859	672	78.23	\$53,550	763	17	2.23	20	2.33	1	0	0	0	1
Jefferson	2600	2	455	418	91.87	\$42,841	455	21	4.62	80	17.58	1	1	0	0	2
Jefferson	2600	3	1,976	1,481	74.95	\$0	1,904	191	10.03	14	0.71	1	0	1	0	2
Jefferson	2600	4	1,083	999	92.24	\$35,675	956	121	12.66	36	3.32	1	1	1	0	3
Jefferson	2600	5	1,362	1,079	79.22	\$40,500	1,352	126	9.32	90	6.61	1	1	1	0	3
Jefferson	5100	1	584	558	95.55	\$28,289	562	0	0	168	28.77	1	1	0	1	3
Jefferson	5100	2	594	594	100	\$38,203	594	6	1.01	129	21.72	1	1	0	0	2
Jefferson	5400	1	602	594	98.67	\$0	574	76	13.24	116	19.27	1	0	1	0	2
Jefferson	5400	2	1,057	1,057	100	\$55,965	998	95	9.52	141	13.34	1	0	1	0	2
Jefferson	5500	1	743	615	82.77	\$60,568	729	91	12.48	7	0.94	1	0	1	0	2
Jefferson	5500	2	729	703	96.43	\$45,049	671	142	21.16	37	5.08	1	1	1	0	3
Jefferson	5500	3	546	524	95.97	\$60,186	509	59	11.59	94	17.22	1	0	1	0	2
Jefferson	5500	4	1,150	1,150	100	\$50,560	1,080	212	19.63	195	16.96	1	0	1	0	2
Jefferson	5600	1	968	946	97.73	\$65,434	873	285	32.65	88	9.09	1	0	1	0	2
Jefferson	5600	2	629	618	98.25	\$33,750	557	98	17.59	11	1.75	1	1	1	0	3
Jefferson	5600	3	538	516	95.91	\$38,333	515	141	27.38	33	6.13	1	1	1	0	3
Jefferson	5600	4	547	547	100	\$53,258	464	106	22.84	36	6.58	1	0	1	0	2
Jefferson	5900	1	1,033	960	92.93	\$24,554	1,033	0	0	107	10.36	1	1	0	0	2

County	Tract	Block-Group	Total Population	Total Minority Population	Percent Minority Population	Median Household Income	Total Population (Age 5 and Over for LEP Analysis)	Total LEP Population	Percent LEP Population	Total Senior Population (Age 65 Years and Over)	Percent Senior Population (Age 65 Years and Over)	Minority Indicator Score	Income Indicator Score	LEP Indicator Score	Senior Indicator Score	EJ Composite Score
Jefferson	5900	2	400	400	100	\$2,499	349	5	1.43	30	7.5	1	1	0	0	2
Jefferson	6100	1	258	251	97.29	\$35,777	258	0	0	94	36.43	1	1	0	1	3
Jefferson	6100	2	388	388	100	\$25,893	348	0	0	68	17.53	1	1	0	0	2
Jefferson	6100	3	597	544	91.12	\$0	561	35	6.24	58	9.72	1	0	0	0	1
Jefferson	6300	1	726	723	99.59	\$33,438	654	41	6.27	98	13.5	1	1	0	0	2
Jefferson	6300	2	674	663	98.37	\$45,469	663	2	0.3	143	21.22	1	1	0	0	2
Jefferson	6400	1	615	576	93.66	\$26,618	589	73	12.39	102	16.59	1	1	1	0	3
Jefferson	6400	2	731	693	94.8	\$28,548	672	157	23.36	196	26.81	1	1	1	1	4
Jefferson	6500	1	752	678	90.16	\$35,324	728	71	9.75	140	18.62	1	1	1	0	3
Jefferson	6500	2	997	876	87.86	\$0	942	148	15.71	48	4.81	1	0	1	0	2
Jefferson	6500	3	541	492	90.94	\$62,946	489	104	21.27	43	7.95	1	0	1	0	2
Jefferson	6500	4	672	520	77.38	\$46,591	579	81	13.99	169	25.15	1	0	1	1	3
Jefferson	6600	1	432	245	56.71	\$66,250	432	54	12.5	72	16.67	1	0	1	0	2
Jefferson	6600	2	1,458	1,392	95.47	\$13,419	1,208	19	1.57	40	2.74	1	1	0	0	2
Jefferson	6600	3	2,134	1,864	87.35	\$40,375	1,870	644	34.44	153	7.17	1	1	1	0	3
Jefferson	6700	1	1,148	1,011	88.07	\$42,938	1,111	295	26.55	78	6.79	1	1	1	0	3
Jefferson	6700	2	1,190	1,081	90.84	\$50,703	1,145	339	29.61	131	11.01	1	0	1	0	2
Jefferson	6800	1	1,056	754	71.4	\$54,242	968	149	15.39	133	12.59	1	0	1	0	2
Jefferson	6800	2	687	604	87.92	\$46,500	643	189	29.39	85	12.37	1	0	1	0	2
Jefferson	6900	1	2,060	1,557	75.58	\$83,563	1,950	219	11.23	128	6.21	1	0	1	0	2
Jefferson	6900	2	919	577	62.79	\$85,662	846	89	10.52	244	26.55	1	0	1	1	3
Jefferson	6900	3	613	579	94.45	\$0	594	15	2.53	173	28.22	1	0	0	1	2
Jefferson	7002	1	2,045	1,863	91.1	\$29,903	1,808	199	11.01	163	7.97	1	1	1	0	3
Jefferson	7002	2	1,625	1,104	67.94	\$57,109	1,467	339	23.11	295	18.15	1	0	1	0	2
Jefferson	7002	3	1,171	648	55.34	\$35,543	1,171	253	21.61	206	17.59	1	1	1	0	3
Jefferson	7003	1	2,003	1,268	63.31	\$37,386	1,692	89	5.26	258	12.88	1	1	0	0	2
Jefferson	7003	2	950	420	44.21	\$12,038	939	25	2.66	167	17.58	0	1	0	0	1
Jefferson	7003	3	967	859	88.83	\$0	891	99	11.11	19	1.96	1	0	1	0	2
Jefferson	7004	1	1,435	1,343	93.59	\$15,366	1,283	48	3.74	105	7.32	1	1	0	0	2
Jefferson	7004	2	1,525	1,047	68.66	\$51,731	1,406	70	4.98	402	26.36	1	0	0	1	2
Jefferson	7100	1	1,206	626	51.91	\$47,530	1,189	226	19.01	195	16.17	1	0	1	0	2
Jefferson	7100	2	1,981	1,093	55.17	\$50,891	1,757	102	5.81	140	7.07	1	0	1	0	2
Jefferson	7100	3	1,185	295	24.89	\$49,113	1,101	65	5.9	278	23.46	0	0	1	0	1
Jefferson	10100	1	650	639	98.31	\$39,000	635	200	31.5	141	21.69	1	1	1	0	3
Jefferson	10100	2	1,148	904	78.75	\$43,092	1,039	382	36.77	70	6.1	1	1	1	0	3
Jefferson	10100	3	800	761	95.12	\$44,583	796	421	52.89	63	7.88	1	1	1	0	3

County	Tract	Block-Group	Total Population	Total Minority Population	Percent Minority Population	Median Household Income	Total Population (Age 5 and Over for LEP Analysis)	Total LEP Population	Percent LEP Population	Total Senior Population (Age 65 Years and Over)	Percent Senior Population (Age 65 Years and Over)	Minority Indicator Score	Income Indicator Score	LEP Indicator Score	Senior Indicator Score	EJ Composite Score
Jefferson	10200	1	1,900	1,743	91.74	\$0	1,598	447	27.97	71	3.74	1	0	1	0	2
Jefferson	10200	2	893	657	73.57	\$0	888	121	13.63	133	14.89	1	0	1	0	2
Jefferson	10300	1	1,236	1,073	86.81	\$97,824	1,171	300	25.62	95	7.69	1	0	1	0	2
Jefferson	10300	2	2,275	2,043	89.8	\$45,258	2,005	267	13.32	279	12.26	1	1	1	0	3
Jefferson	10400	1	1,308	559	42.74	\$46,801	1,238	3	0.24	311	23.78	0	0	0	0	0
Jefferson	10400	2	987	366	37.08	\$112,212	906	181	19.98	133	13.48	0	0	1	0	1
Jefferson	10400	3	1,034	494	47.78	\$120,219	967	0	0	243	23.5	0	0	0	0	0
Jefferson	10500	1	741	485	65.45	\$73,065	659	29	4.4	25	3.37	1	0	0	0	1
Jefferson	10500	2	1,569	873	55.64	\$62,031	1,469	173	11.78	148	9.43	1	0	1	0	2
Jefferson	10500	3	1,267	905	71.43	\$39,398	1,212	274	22.61	125	9.87	1	1	1	0	3
Jefferson	10500	4	1,186	699	58.94	\$62,283	1,028	34	3.31	128	10.79	1	0	0	0	1
Jefferson	10600	1	1,345	706	52.49	\$91,080	1,286	62	4.82	352	26.17	1	0	0	1	2
Jefferson	10600	2	942	443	47.03	\$53,404	862	149	17.29	100	10.62	0	0	1	0	1
Jefferson	10600	3	598	185	30.94	\$0	532	0	0	268	44.82	0	0	0	1	1
Jefferson	10600	4	1,691	574	33.94	\$59,778	1,623	84	5.18	463	27.38	0	0	0	1	1
Jefferson	10600	5	1,367	686	50.18	\$96,186	1,290	127	9.84	188	13.75	1	0	1	0	2
Jefferson	10700	1	1,029	398	38.68	\$88,139	1,020	141	13.82	150	14.58	0	0	1	0	1
Jefferson	10700	2	1,107	221	19.96	\$55,526	1,041	62	5.96	241	21.77	0	0	1	0	1
Jefferson	10700	3	902	99	10.98	\$86,154	864	0	0	240	26.61	0	0	0	1	1
Jefferson	10800	1	890	193	21.69	\$74,708	831	0	0	140	15.73	0	0	0	0	0
Jefferson	10800	2	525	93	17.71	\$51,985	462	19	4.11	119	22.67	0	0	0	0	0
Jefferson	10800	3	2,153	516	23.97	\$0	1,916	160	8.35	82	3.81	0	0	1	0	1
Jefferson	10800	4	1,291	38	2.94	\$60,795	1,045	0	0	232	17.97	0	0	0	0	0
Jefferson	10800	5	1,134	181	15.96	\$0	1,090	0	0	64	5.64	0	0	0	0	0
Jefferson	10901	1	818	69	8.44	\$52,321	779	0	0	92	11.25	0	0	0	0	0
Jefferson	10901	2	1,170	93	7.95	\$82,750	1,141	8	0.7	306	26.15	0	0	0	1	1
Jefferson	10901	3	1,331	265	19.91	\$64,792	1,258	66	5.25	178	13.37	0	0	0	0	0
Jefferson	10902	1	1,344	402	29.91	\$106,154	1,251	65	5.2	229	17.04	0	0	0	0	0
Jefferson	10902	2	1,391	190	13.66	\$109,176	1,350	6	0.44	382	27.46	0	0	0	1	1
Jefferson	10902	3	1,492	427	28.62	\$105,469	1,482	18	1.21	295	19.77	0	0	0	0	0
Jefferson	11001	1	1,239	384	30.99	\$61,275	1,111	203	18.27	233	18.81	0	0	1	0	1
Jefferson	11001	2	1,244	36	2.89	\$0	1,082	46	4.25	189	15.19	0	0	0	0	0
Jefferson	11001	3	1,938	468	24.15	\$121,974	1,930	145	7.51	150	7.74	0	0	1	0	1
Jefferson	11001	4	912	329	36.07	\$0	789	58	7.35	134	14.69	0	0	1	0	1
Jefferson	11002	1	1,632	272	16.67	\$116,591	1,502	41	2.73	309	18.93	0	0	0	0	0
Jefferson	11002	2	1,147	338	29.47	\$51,389	1,079	52	4.82	210	18.31	0	0	0	0	0

County	Tract	Block-Group	Total Population	Total Minority Population	Percent Minority Population	Median Household Income	Total Population (Age 5 and Over for LEP Analysis)	Total LEP Population	Percent LEP Population	Total Senior Population (Age 65 Years and Over)	Percent Senior Population (Age 65 Years and Over)	Minority Indicator Score	Income Indicator Score	LEP Indicator Score	Senior Indicator Score	EJ Composite Score
Jefferson	11002	3	651	138	21.2	\$64,464	607	37	6.1	82	12.6	0	0	0	0	0
Jefferson	11101	1	1,287	383	29.76	\$101,056	1,287	64	4.97	226	17.56	0	0	0	0	0
Jefferson	11101	2	1,109	125	11.27	\$69,826	1,098	0	0	118	10.64	0	0	0	0	0
Jefferson	11101	3	1,275	233	18.27	\$74,777	1,208	26	2.15	310	24.31	0	0	0	0	0
Jefferson	11101	4	980	183	18.67	\$54,712	938	50	5.33	230	23.47	0	0	0	0	0
Jefferson	11102	1	963	46	4.78	\$68,393	891	0	0	47	4.88	0	0	0	0	0
Jefferson	11102	2	714	217	30.39	\$29,783	658	33	5.02	80	11.2	0	1	0	0	1
Jefferson	11102	3	853	168	19.7	\$52,054	748	15	2.01	237	27.78	0	0	0	1	1
Jefferson	11204	1	1,313	348	26.5	\$143,098	1,313	104	7.92	90	6.85	0	0	1	0	1
Jefferson	11204	2	1,431	122	8.53	\$66,250	1,247	0	0	305	21.31	0	0	0	0	0
Jefferson	11204	3	2,273	347	15.27	\$54,757	2,131	35	1.64	404	17.77	0	0	0	0	0
Jefferson	11205	1	906	58	6.4	\$63,372	906	0	0	57	6.29	0	0	0	0	0
Jefferson	11205	2	972	172	17.7	\$112,847	972	0	0	179	18.42	0	0	0	0	0
Jefferson	11303	1	1,053	376	35.71	\$107,628	1,037	102	9.84	317	30.1	0	0	1	1	2
Jefferson	11303	2	2,441	537	22	\$104,511	2,163	118	5.46	423	17.33	0	0	0	0	0
Jefferson	11304	1	2,367	1,071	45.25	\$50,564	2,230	287	12.87	343	14.49	0	0	1	0	1
Jefferson	11304	2	1,482	55	3.71	\$121,667	1,383	0	0	103	6.95	0	0	0	0	0
Jefferson	11304	3	2,330	1,775	76.18	\$32,500	2,330	283	12.15	91	3.91	1	1	1	0	3
Jefferson	11401	1	1,676	73	4.36	\$103,201	1,579	5	0.32	285	17	0	0	0	0	0
Jefferson	11401	2	1,183	261	22.06	\$62,414	1,101	25	2.27	279	23.58	0	0	0	0	0
Jefferson	11401	3	765	303	39.61	\$85,750	765	5	0.65	170	22.22	0	0	0	0	0
Jefferson	11402	1	471	262	55.63	\$83,984	471	0	0	63	13.38	1	0	0	0	1
Jefferson	11402	2	1,523	920	60.41	\$108,273	1,410	89	6.31	214	14.05	1	0	1	0	2
Jefferson	11402	3	2,885	1,817	62.98	\$0	2,600	544	20.92	318	11.02	1	0	1	0	2
Jefferson	11500	1	2,955	250	8.46	\$89,531	2,795	64	2.29	437	14.79	0	0	0	0	0
Jefferson	11600	1	1,437	239	16.63	\$97,019	1,329	38	2.86	258	17.95	0	0	0	0	0
Jefferson	11600	2	1,014	265	26.13	\$90,000	931	51	5.48	177	17.46	0	0	1	0	1
Jefferson	11700	1	938	918	97.87	\$25,147	925	138	14.92	197	21	1	1	1	0	3
Jefferson	11700	2	648	467	72.07	\$78,696	604	219	36.26	50	7.72	1	0	1	0	2
Jefferson	11800	1	1,046	1,046	100	\$29,063	973	62	6.37	196	18.74	1	1	1	0	3
Jefferson	11800	2	630	623	98.89	\$27,614	564	14	2.48	130	20.63	1	1	0	0	2
Jefferson	980000	1	0	0	0	\$0	0	0	0	0	0	0	0	0	0	0
Jefferson	980200	1	6,510	4,625	71.04	\$0	6,510	285	4.38	177	2.72	1	0	0	0	1
Jefferson	980300	1	3,030	2,190	72.28	\$0	3,030	400	13.2	99	3.27	1	0	1	0	2
Jefferson	990000	0	0	0	0	\$0	0	0	0	0	0	0	0	0	0	0
Orange	20200	1	648	429	66.2	\$0	620	2	0.32	151	23.3	1	0	0	0	1

County	Tract	Block-Group	Total Population	Total Minority Population	Percent Minority Population	Median Household Income	Total Population (Age 5 and Over for LEP Analysis)	Total LEP Population	Percent LEP Population	Total Senior Population (Age 65 Years and Over)	Percent Senior Population (Age 65 Years and Over)	Minority Indicator Score	Income Indicator Score	LEP Indicator Score	Senior Indicator Score	EJ Composite Score
Orange	20200	2	813	803	98.77	\$40,644	798	32	4.01	138	16.97	1	1	0	0	2
Orange	20200	3	1,262	881	69.81	\$54,776	1,201	96	7.99	236	18.7	1	0	1	0	2
Orange	20200	4	777	738	94.98	\$31,538	718	0	0	71	9.14	1	1	0	0	2
Orange	20300	1	1,376	284	20.64	\$59,596	1,248	92	7.37	254	18.46	0	0	1	0	1
Orange	20300	2	1,620	903	55.74	\$36,269	1,469	28	1.91	209	12.9	1	1	0	0	2
Orange	20500	1	1,849	715	38.67	\$53,443	1,642	58	3.53	276	14.93	0	0	0	0	0
Orange	20500	2	710	271	38.17	\$47,569	567	37	6.53	102	14.37	0	0	0	0	0
Orange	20500	3	701	149	21.26	\$81,875	617	42	6.81	118	16.83	0	0	0	0	0
Orange	20700	1	2,004	366	18.26	\$0	1,913	27	1.41	264	13.17	0	0	0	0	0
Orange	20700	2	1,602	326	20.35	\$0	1,475	35	2.37	180	11.24	0	0	0	0	0
Orange	20700	3	856	90	10.51	\$63,750	804	0	0	393	45.91	0	0	0	1	1
Orange	20700	4	1,253	138	11.01	\$33,446	1,238	20	1.62	359	28.65	0	1	0	1	2
Orange	20800	1	967	257	26.58	\$43,859	861	19	2.21	190	19.65	0	1	0	0	1
Orange	20800	2	852	350	41.08	\$50,096	753	0	0	132	15.49	0	0	0	0	0
Orange	20900	1	597	439	73.53	\$65,125	580	23	3.97	62	10.39	1	0	0	0	1
Orange	20900	2	1,603	1,106	69	\$53,149	1,411	45	3.19	226	14.1	1	0	0	0	1
Orange	20900	3	1,782	1,206	67.68	\$44,412	1,593	93	5.84	240	13.47	1	1	1	0	3
Orange	21000	1	1,154	189	16.38	\$78,722	1,138	49	4.31	326	28.25	0	0	0	1	1
Orange	21000	2	846	143	16.9	\$77,679	804	18	2.24	139	16.43	0	0	0	0	0
Orange	21100	1	955	59	6.18	\$31,402	913	5	0.55	185	19.37	0	1	0	0	1
Orange	21100	2	983	127	12.92	\$92,750	904	5	0.55	131	13.33	0	0	0	0	0
Orange	21200	1	867	10	1.15	\$80,179	822	29	3.53	89	10.27	0	0	0	0	0
Orange	21200	2	1,624	141	8.68	\$97,200	1,478	0	0	230	14.16	0	0	0	0	0
Orange	21200	3	1,154	185	16.03	\$68,125	1,154	0	0	201	17.42	0	0	0	0	0
Orange	21200	4	1,063	179	16.84	\$60,809	1,022	29	2.84	308	28.97	0	0	0	1	1
Orange	21300	1	683	162	23.72	\$0	629	0	0	83	12.15	0	0	0	0	0
Orange	21300	2	2,452	348	14.19	\$89,554	2,326	43	1.85	385	15.7	0	0	0	0	0
Orange	21300	3	1,791	335	18.7	\$82,635	1,512	118	7.8	68	3.8	0	0	1	0	1
Orange	21300	4	1,098	344	31.33	\$120,563	1,039	0	0	286	26.05	0	0	0	1	1
Orange	21400	1	1,521	148	9.73	\$91,875	1,431	40	2.8	253	16.63	0	0	0	0	0
Orange	21400	2	2,455	637	25.95	\$82,135	2,204	124	5.63	239	9.74	0	0	1	0	1
Orange	21501	1	798	110	13.78	\$78,750	798	0	0	239	29.95	0	0	0	1	1
Orange	21501	2	1,289	161	12.49	\$65,882	1,212	6	0.5	120	9.31	0	0	0	0	0
Orange	21503	1	1,674	310	18.52	\$76,477	1,621	135	8.33	324	19.35	0	0	1	0	1
Orange	21503	2	1,054	145	13.76	\$98,806	961	24	2.5	211	20.02	0	0	0	0	0
Orange	21504	1	806	283	35.11	\$0	678	0	0	135	16.75	0	0	0	0	0

County	Tract	Block-Group	Total Population	Total Minority Population	Percent Minority Population	Median Household Income	Total Population (Age 5 and Over for LEP Analysis)	Total LEP Population	Percent LEP Population	Total Senior Population (Age 65 Years and Over)	Percent Senior Population (Age 65 Years and Over)	Minority Indicator Score	Income Indicator Score	LEP Indicator Score	Senior Indicator Score	EJ Composite Score
Orange	21504	2	649	59	9.09	\$64,815	649	13	2	264	40.68	0	0	0	1	1
Orange	21504	3	920	164	17.83	\$46,071	868	22	2.53	220	23.91	0	0	0	0	0
Orange	21504	4	1,792	0	0	\$102,318	1,723	0	0	241	13.45	0	0	0	0	0
Orange	21600	1	546	70	12.82	\$53,750	526	1	0.19	136	24.91	0	0	0	0	0
Orange	21600	2	749	96	12.82	\$73,125	741	0	0	112	14.95	0	0	0	0	0
Orange	21600	3	1,676	192	11.46	\$74,615	1,570	40	2.55	200	11.93	0	0	0	0	0
Orange	21600	4	555	114	20.54	\$58,375	510	0	0	112	20.18	0	0	0	0	0
Orange	21700	1	976	44	4.51	\$94,808	903	11	1.22	207	21.21	0	0	0	0	0
Orange	21700	2	1,018	100	9.82	\$61,563	930	17	1.83	118	11.59	0	0	0	0	0
Orange	21800	1	885	208	23.5	\$90,703	850	119	14	162	18.31	0	0	1	0	1
Orange	21800	2	1,919	222	11.57	\$71,500	1,833	0	0	80	4.17	0	0	0	0	0
Orange	21901	1	2,549	89	3.49	\$90,839	2,459	131	5.33	689	27.03	0	0	1	1	2
Orange	21902	1	1,156	54	4.67	\$16,674	1,156	0	0	104	9	0	1	0	0	1
Orange	21902	2	505	78	15.45	\$81,307	505	0	0	129	25.54	0	0	0	1	1
Orange	21902	3	1,215	79	6.5	\$57,875	1,206	0	0	161	13.25	0	0	0	0	0
Orange	21902	4	966	61	6.31	\$0	686	0	0	17	1.76	0	0	0	0	0
Orange	22000	1	643	91	14.15	\$71,429	643	0	0	148	23.02	0	0	0	0	0
Orange	22000	2	998	253	25.35	\$31,094	982	7	0.71	123	12.32	0	1	0	0	1
Orange	22000	3	2,119	164	7.74	\$48,529	1,963	54	2.75	352	16.61	0	0	0	0	0
Orange	22200	1	352	0	0	\$76,042	324	0	0	78	22.16	0	0	0	0	0
Orange	22200	2	2,525	159	6.3	\$111,111	2,348	0	0	142	5.62	0	0	0	0	0
Orange	22200	3	1,407	224	15.92	\$121,250	1,268	0	0	248	17.63	0	0	0	0	0
Orange	22301	1	315	26	8.25	\$101,500	315	26	8.25	175	55.56	0	0	0	1	1
Orange	22301	2	1,428	0	0	\$79,167	1,353	29	2.14	206	14.43	0	0	0	0	0
Orange	22301	3	2,666	613	22.99	\$121,202	2,518	16	0.64	219	8.21	0	0	0	0	0
Orange	22302	1	1,037	149	14.37	\$128,144	997	0	0	55	5.3	0	0	0	0	0
Orange	22302	2	2,992	173	5.78	\$117,260	2,751	52	1.89	157	5.25	0	0	0	0	0
Orange	22400	1	1,068	162	15.17	\$111,304	1,024	0	0	86	8.05	0	0	0	0	0
Orange	22400	2	1,029	141	13.7	\$92,654	970	6	0.62	169	16.42	0	0	0	0	0
Orange	22400	3	278	53	19.06	\$26,793	278	0	0	125	44.96	0	1	0	1	2
Orange	22400	4	758	20	2.64	\$91,190	648	36	5.56	19	2.51	0	0	0	0	0
Orange	22400	5	1,815	273	15.04	\$73,625	1,748	103	5.89	422	23.25	0	0	1	0	1



Chapter 4: Title VI Complaint Form

Please see the Title VI Complaint Form on the following page:

Title VI Complaint Form

Section I:	
Name:	
Address:	
Telephone (Home):	Telephone (Work):
Email Address:	
Access Form Requirements? <input type="checkbox"/> Large Print <input type="checkbox"/> TDD <input type="checkbox"/> Audio Tape <input type="checkbox"/> Other:	
Section II:	
Are you filling this complain on your own behalf? <input type="checkbox"/> Yes (if "yes", go to Section III) <input type="checkbox"/> No	
If not, please supply the name of the person for whom you are complaining:	
Please explain why you have filed for a third party:	
Have you obtained permission of the aggrieved third party to file this complaint? <input type="checkbox"/> Yes <input type="checkbox"/> No	
Section III	
I believe the discrimination I experienced was based on (check all that apply):	
<input type="checkbox"/> Race <input type="checkbox"/> Color <input type="checkbox"/> National Origin	
Date of alleged discrimination (Month Day, Year):	
Explain as clearly as possible what happened and why you believe you were discriminated against. Describe all persons who were involved, including witnesses. If more space is needed, please use the back of this form. You may also attach any written materials or other information that you think is relevant to your complaint.	
<hr/> <hr/>	
Section IV:	
Have you previously filed a Title VI complaint with this agency? <input type="checkbox"/> Yes <input type="checkbox"/> No	
Section V:	
Have you filed this complaint with any other Federal, State, or Local Agency, or with any Federal or State Court?	
<input type="checkbox"/> Yes <input type="checkbox"/> No	
If yes, check all that apply:	
<input type="checkbox"/> Federal Agency: _____	<input type="checkbox"/> State Agency: _____
<input type="checkbox"/> Federal Court: _____	<input type="checkbox"/> Local Agency: _____
<input type="checkbox"/> State Court: _____	
Section VI:	
Name of agency complaint is against:	
Contact Person:	Title:

 Signature

 Date

Please submit this form in person at the address below or mail this form to: South East Texas Regional Planning Commission, Title VI Coordinator, 2210 Eastex Freeway, Beaumont, TX 77703.